

How to Use the Frequently Flooded Soils Mapping Tool

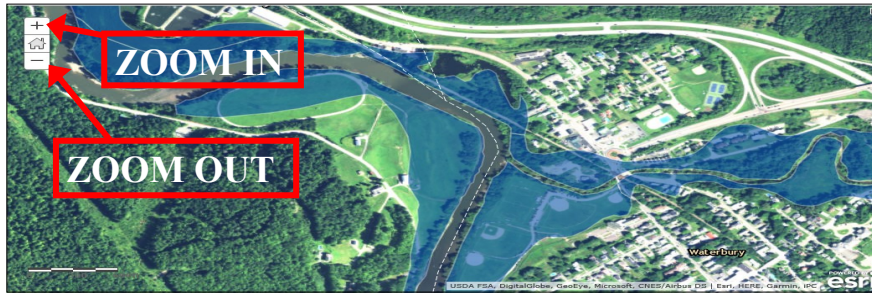
Determine if you have floodplain fields according the USDA Soil Survey Flooding Frequency Classes here: <http://arcg.is/qHOTO>

Blue areas indicate lands that are classified as frequently flooded, however, it does not preclude other areas that have a high flood potential from needing to implement land management practices required for frequently flooded soils.

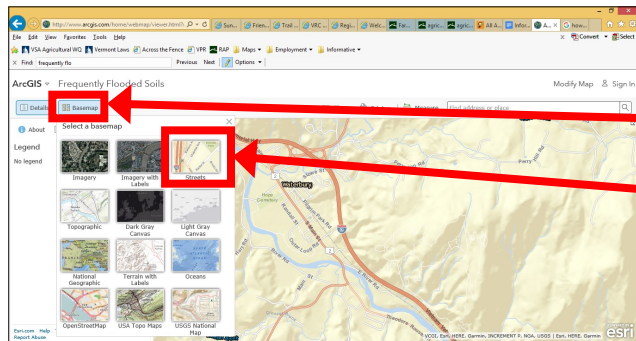
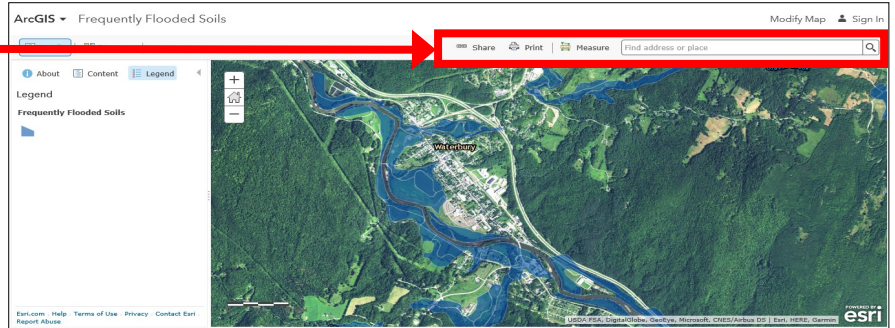


How to zoom in and out, and “pan” around a map.

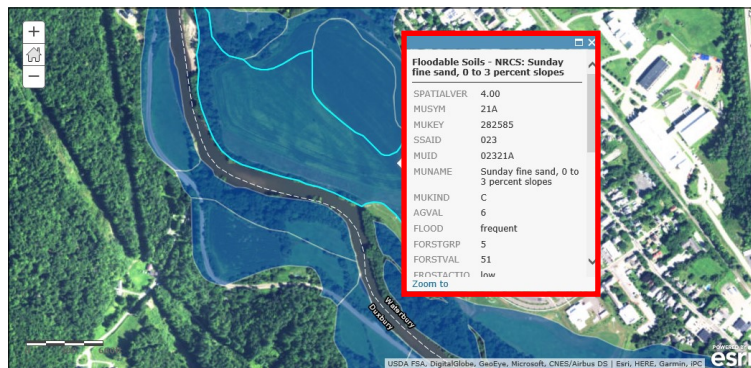
The map must be zoomed in far enough to see the “Floodable Soils” layer. To move around the map, click on the map and drag (or “pan”) in any direction.



Use the search bar to type in an address or place.



Click ‘Basemap’, and then ‘Streets’ to see street and road labels.



Click on the land area to show pertinent information.

Questions about frequently flooded soils or the Frequently Flooded Soils Mapping Tool?

Please call: (802) 828-2431 or Email: AGR.WaterQuality@vermont.gov