



Farm to School and Early Childhood Capacity Building Grant Program

Description of Technical Assistance (TA) Services Available to Grantees

The Farm to School and Early Childhood Capacity Building Grant is a comprehensive Farm to School program that includes financial assistance, technical assistance, and coaching for grantees to help them build and sustain farm to school programs. Technical assistance (TA) is provided at no cost to Capacity Building Grant recipients as part of their award package. TA is available to help teams reach their farm to school goals.

Grantees are required to attend trainings, workshops, or receive individualized consultation from at least two of the four TA providers over the course of the grant period.

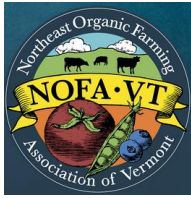
This document provides an overview of the services available from the four TA provider organizations. Support is customizable to each grantee's needs, interests, and availability. During the grant period, grantees and the grantee coaches to contact technical assistance providers to seek their support.

Technical Assistance

Local Food Procurement Training.....	2
Meal Program Viability & Food Access	3
Curriculum Integration.....	5
School Gardens & Nutrition	8

Local Food Procurement Training

Contact: kayla@nofavt.org; laureng@nofavt.org



Purpose

Kavla Strom

Lauren Griswold

Food service program increases procurement of local and regional food

Support Services

Areas of support include, but are not limited to:

- identifying local farmers and producers,
- navigating procurement regulations,
- tracking local purchases, etc.
- utilizing farm shares and community supported agriculture,
- applying to the Vermont Local Foods Incentive Grant (K-12 only),
- forward contracting,

Target Audience

Food service manager and food service staff

How to Access TA Support

- Online or in-person workshops that will be scheduled for a time and place that is most convenient for FTSEC grantees
- Sharing useful documents, tools, and communications materials over email

Examples of TA Offerings to Former Grantees

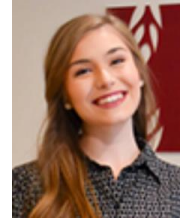
- NOFA-VT and Hunger Free VT co-hosted virtual workshop for an early childhood grantee on local purchasing and child nutrition TA. Participants engaged in discussion with facilitators and each other, offering recommendations, tips, and ideas for how to utilize the produce in a CSA share, and how to market to families that they are using local foods.
- NOFA-VT facilitated an in-person meeting focused on procurement with the (K-12) Farm to School team; We discussed specific goals for their local procurement, including identifying potential new vendors, focusing on center-plate proteins, and specific challenges. We shared resources and identified next steps.

Meal Program Viability & Food Access

Contact: tmorgan@hungerfreevt.org; kagan@hungerfreevt.org;



Tim Morgan



Keely Agan

Purpose

Centering child food security and contributing to a robust virtuous cycle by improving food access and strengthening meal programs. Within the last few years, there have been massive changes to federal nutrition programs opening up new opportunities for growth.

Support Services

Trainings will be provided by a meal program and food access expert. All grantees can schedule a workshop on building child nutrition programs to reflect your values. Additional training topics can include but are not limited to:

- Building groundwork for or expanding CACFP meals in early childhood
- Establishing or expanding meal programs in the summer, and/or afterschool,
- Increasing participation in federal meal programs,
- Long-term planning and forecasting,
- Implementing best practices, such as Breakfast After the Bell,
- Creating welcoming and inclusive cafeterias and other food spaces,
- exploring creative partnerships to support meal programs,
- food access programs including 3SquaresVT and WIC
- Northern Lights-approved professional development credits for eligible early childhood educators

Target Audience

Food service staff, administrators, and anyone who may be involved in meal provision or parent education & engagement

How to Access TA Support

- In-person or online workshops that will be scheduled for a time and place that is most convenient for FTSEC grantees
- Additional follow-up meetings and support as needed
- Sharing useful documents, tools, and communications materials over email

Examples of TA Offerings to Former Grantees

- Expanded Summer Food Service Program operations, including supporting new meal pick-up or delivery options for families
- Helped schools prepare for summer with effective outreach plans and attractive summer meals outreach materials to promote sites and share information with families about 3SquaresVT.
- Helped ECE's gather necessary resources and increase readiness for onboarding into the Child and Adult Care Food Program (CACFP)
- Worked to find creative solutions to meal programming in early childhood education settings when the CACFP was not an option, via connections with school food authorities, other ECE's, etc.
- Implemented program changes that increased the accessibility of meals, including offering breakfast after the bell, ensuring ample meal times, and offering kids opportunities to engage with new foods.

Farm to School Curriculum Integration (K-12)

Contact: cmulcahy@shelburnefarms.org; jcirillo@shelburnefarms.org



Jen Cirillo



Courtney Mulcahy

Purpose

Curriculum support is provided by staff from Shelburne Farms and is designed to help grantees integrate food systems, agriculture & environment, and nutrition education into their classrooms and broader educational experiences.

Support Services

Farm to School curriculum integration support for pK-12 educators and support staff in individual schools and/or at the district level.

- Topics covered by curriculum support include, but are not limited to: food and food systems, agriculture & environment, and nutrition
- Offer connections to resources, tools, partners, organizations, etc. to grantee schools based on grantee identified needs and specific work
- Provide virtual assistance and consultation to individual grantee schools on an as-needed basis
- Educator support around specific farm to school topics or initiatives

Target Audience

- K-12 educators and support staff, Pre-K programs in public schools

How to Access TA Support

- Two (2) In-person workshops in central locations for multiple teams, designed to give grantees ideas, inspiration and guidance of what curriculum integration looks like within Farm to School.
- As needed virtual support for individual team grantees addressing specific questions or needs.

- Virtual sharing of resources & other materials that support curriculum integration within an educational setting

Examples of TA Offerings to Former Grantees

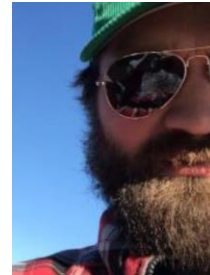
- Presentation and planning that pairs Farm to School topics with existing curriculum, academic standards, and/or school initiatives.
- Curriculum integration programming & consultation in coordination with school gardens technical assistance
- Planning scope & sequence of Farm to School across the curriculum
- Sharing examples and promising practices that have helped other teams with similar demographics and needs
- Connecting educators with other organizations or individuals that can further support their curricular goals & objectives

Farm to Early Childhood Curriculum Integration

Contact: cgreene@shelburnefarms.org; jnorris@shelburnefarms.org



Cynthia Greene



Jed Norris

Purpose

Curriculum support is provided by staff from Shelburne Farms and is designed to help grantees integrate food systems, agriculture & environment, and nutrition education into their classrooms and broader early childhood programming experiences.

Support Services

Farm to Early Childhood curriculum integration support for early educators and program staff in individual programs or at a community level.

- Topics covered by curriculum support include, but are not limited to: food and food systems, agriculture & environment, and nutrition
- Offer connections to resources, tools, partners, organizations, etc to grantee programs based on grantee identified needs and specific work

- Provide virtual assistance and consultation to individual grantee programs on an as-needed basis
- Educator support around specific farm to early childhood topics or initiatives

Target Audience

Early Educators, Program Administrators

How to Access TA Support

- (2) virtual Farm to Early Childhood Introductory Workshops will be available to all teams and related program staff. These virtual options are scheduled at times to meet a majority of needs - often in the evenings or on a weekend as necessary.
- (2) in-person integration workshops for ECE grantees, based on grantee needs, which will include curriculum and other aspects like community building, family engagement, staff buy-in, etc. These workshops will serve grantee programs but will be open to all early childhood education (ECE) professionals, including registered or licensed early childhood programs.
- Virtual sharing of resources, documents, tools, and communications materials to support FTEC implementation
- Phone calls or zoom meetings as requested for clarification or community resource connection

Examples of TA Offerings to Former Grantees

- highlighting best practices in creating or expanding food, farm, and nutrition education opportunities for young children and their families;
- aligning Farm to Early Childhood approaches and topics with Vermont Early Learning Standards; child care licensing regulations; and STARS;
- networking and resource linking: Indigenous people resources and connections; CACFP recipe sharing; finding farmer's markets; outdoor education professional development opportunities; wellness policy writing templates/handbooks; Harvest of the Month and other curricular resources;
- Targeted program requests: field trips to Shelburne Farms; collaborative grant writing support; community and family engagement events

School Gardens & Nutrition

Contact: cedar@vtgardens.org



Cedar Schiewetz

Purpose

Grantee develops increased capacity to grow, utilize and maintain gardens, and support schools in providing programming related to utilizing foods grown in the garden in health/nutrition lessons

Support Services

Trainings will cover critical aspects of successful garden projects as well as information on how to integrate gardens into a comprehensive farm to school or early childhood program. On-site technical assistance visits can include nutritional programming or hands-on workshops related to gardening topics such as general garden planning, seed starting, creating pollinator habitat, on-site composting, and more.

Target Audience

Teachers, administrators, coaches, and farm to school staff.

How to Access TA Support

- Online or in-person workshops that will be scheduled for a time and place that is most convenient for FTSEC grantees
- Sharing useful documents, tools, and communications materials over email
- In-person workshop utilizing Vermont Garden Network's Veducation Van program

Examples of TA Offerings to Former Grantees

- Virtual workshop on setting garden program intentions and defining goals
- Direct technical assistance and expertise in designing garden beds to best meet program needs
- Workshops focused on reinforcing garden engagement and food exploration by exploring topics such as seed starting, garden design, cooking and nutrition with seasonal veggies, and on-site composting