

# Farm Agronomic Practices (FAP) Program: Agronomic Training Grants

The Farm Agronomic Practice (FAP) grant program from the Vermont Agency of Agriculture Food & Markets (VAAFAM) provides instructional activity grants to support Vermont farmers and service providers to attend events that further their knowledge of agricultural water quality.

## **Program Information:**

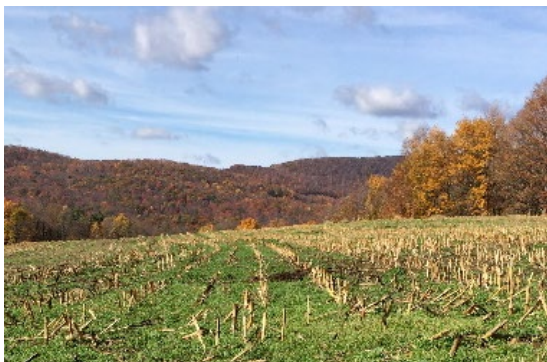
- This grant supports Vermont farmers and agricultural service providers to attend in-state, out-of-state, or international educational events that focus on at least one of the following:
  - State and federal agricultural water quality regulations,
  - The impacts of agricultural wastes on water quality, and/or
  - Best practices to reduce agricultural impacts to water quality.
- Complete applications are due **45 days prior to the event**.
- Payment can support up to 100% of eligible costs as documented based on receipts/invoices. All expenses are subject to review and approval by VAAFAM.
- Individuals are limited to **\$2,000 in funding per state fiscal year through this initiative**.

Note: Individuals representing organizations with active agreements that support education and outreach through the Agricultural Clean Water Initiative Program (AgCWIP) may be considered ineligible for funding under this program.

Activities must be primarily instructional. Attendance at lobbying or advocacy-focused events is ineligible.

## **Eligible Costs:**

All applications and expenses are subject to review by VAAFAM to ensure that they meet eligibility requirements and that costs are reasonable.



Eligible costs include the following:

- **Registration fees** (up to 100%)
- **Hotel/Lodging** (up to 100%)
- **Airfare** (up to 100%)
- **Mileage** (federal reimbursement rate)
- **Relief Milking/Farmwork** (\$30/hr)

*Ineligible: Food, Drink, Entertainment*

**Applications can be found online at [Agriculture.vermont.gov/fap](https://agriculture.vermont.gov/fap) or by contacting the Water Quality Division at (802) 828-2431.**