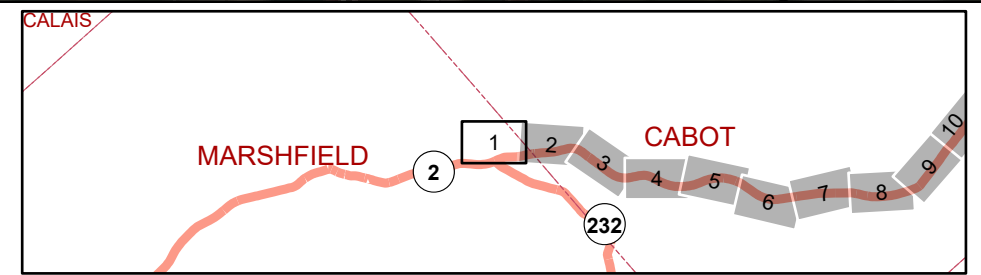
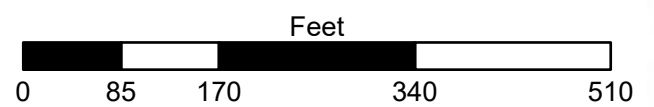


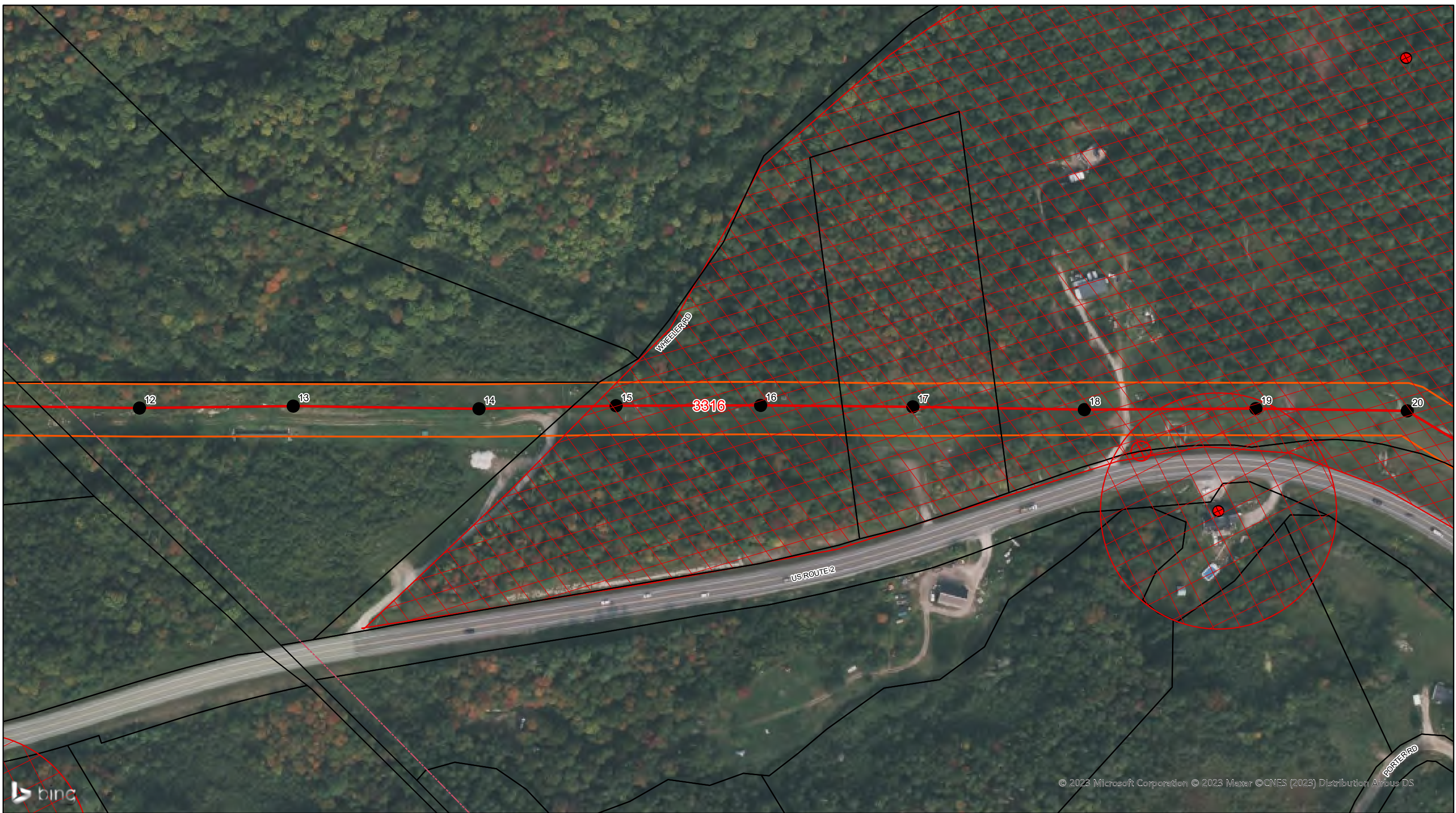


FLAT CUT	Removal / Take Down	200ft Gravel Well	Green Mt Power ROW
FLR + FLAT CUT hwd/swd 12ft +	Special Concern	Ground Water Protection Area	Structure
FOLIAR SPRAY	Well Location	Town Line	Transmission Line
Required Contac - Customer	Public Well	Tax Parcel	Threatened and Endangered Species - BMPs
Priority Location	200ft Well Buffer	State Forest	No Herbicide Requested

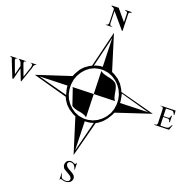
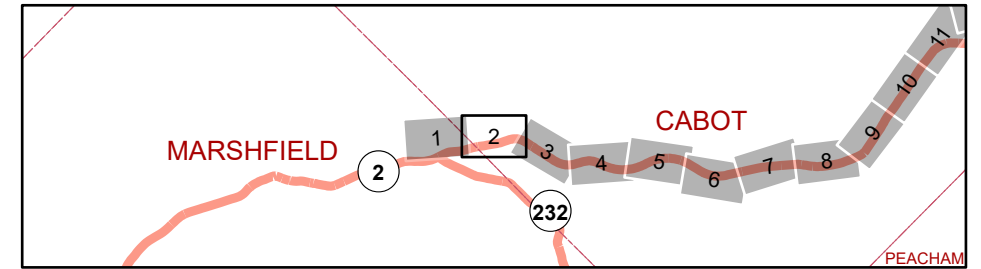


MARSHFIELD to COMERFORD
Line# 3316 34.5 kV





	FLAT CUT		Removal / Take Down		200ft Gravel Well		Green Mt Power ROW
	FLR + FLAT CUT hwd/swd 12ft +		Special Concern		Ground Water Protection Area		Structure
	FOLIAR SPRAY		Well Location		Town Line		Transmission Line
	Required Contac - Customer		Public Well		Tax Parcel		Threatened and Endangered Species - BMPs
	Priority Location		200ft Well Buffer		State Forest		No Herbicide Requested



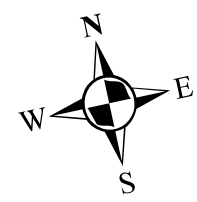
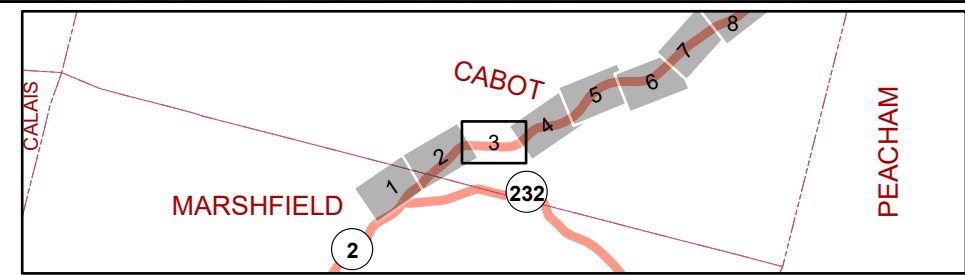
MARSHFIELD to COMERFORD
 Line# 3316 34.5 kV

Feet

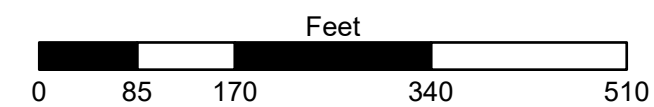




FLAT CUT	Removal / Take Down	200ft Gravel Well	Green Mt Power ROW
FLR + FLAT CUT hwd/swd 12ft +	Special Concern	Ground Water Protection Area	Structure
FOLIAR SPRAY	Well Location	Town Line	Transmission Line
Required Contact - Customer	Public Well	Tax Parcel	Threatened and Endangered Species - BMPs
Priority Location	200ft Well Buffer	State Forest	No Herbicide Requested



MARSHFIELD to COMERFORD
Line# 3316 34.5 kV

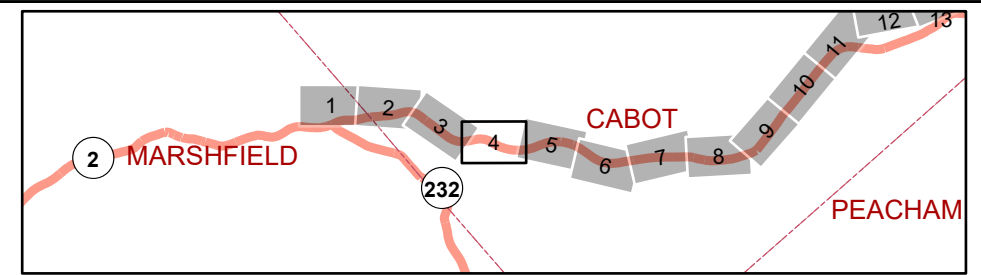




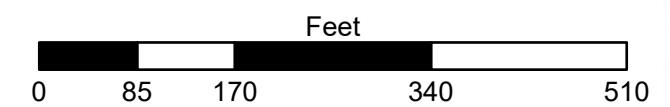
bing

© 2023 Microsoft Corporation © 2023 Maxar © CNES (2023) Distribution Airbus DS

FLAT CUT	Removal / Take Down	200ft Gravel Well	Green Mt Power ROW
FLR + FLAT CUT hwd/swd 12ft +	Special Concern	Ground Water Protection Area	Structure
FOLIAR SPRAY	Well Location	Town Line	Transmission Line
Required Contac - Customer	Public Well	Tax Parcel	Threatened and Endangered Species - BMPs
Priority Location	200ft Well Buffer	State Forest	No Herbicide Requested



MARSHFIELD to COMERFORD
Line# 3316 34.5 kV

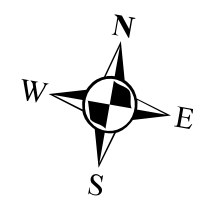
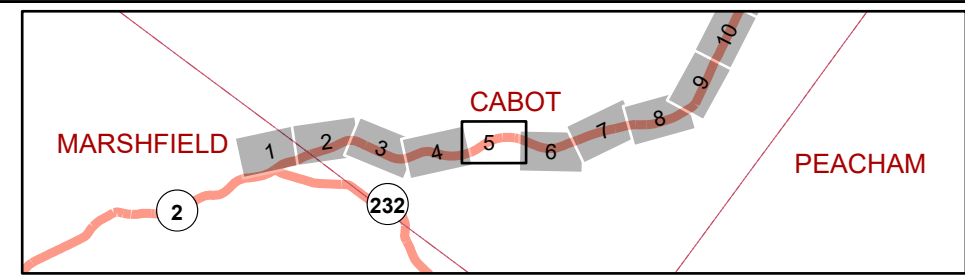




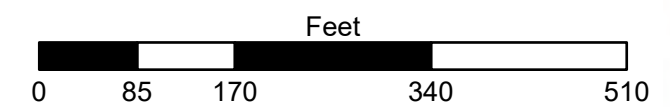
bing

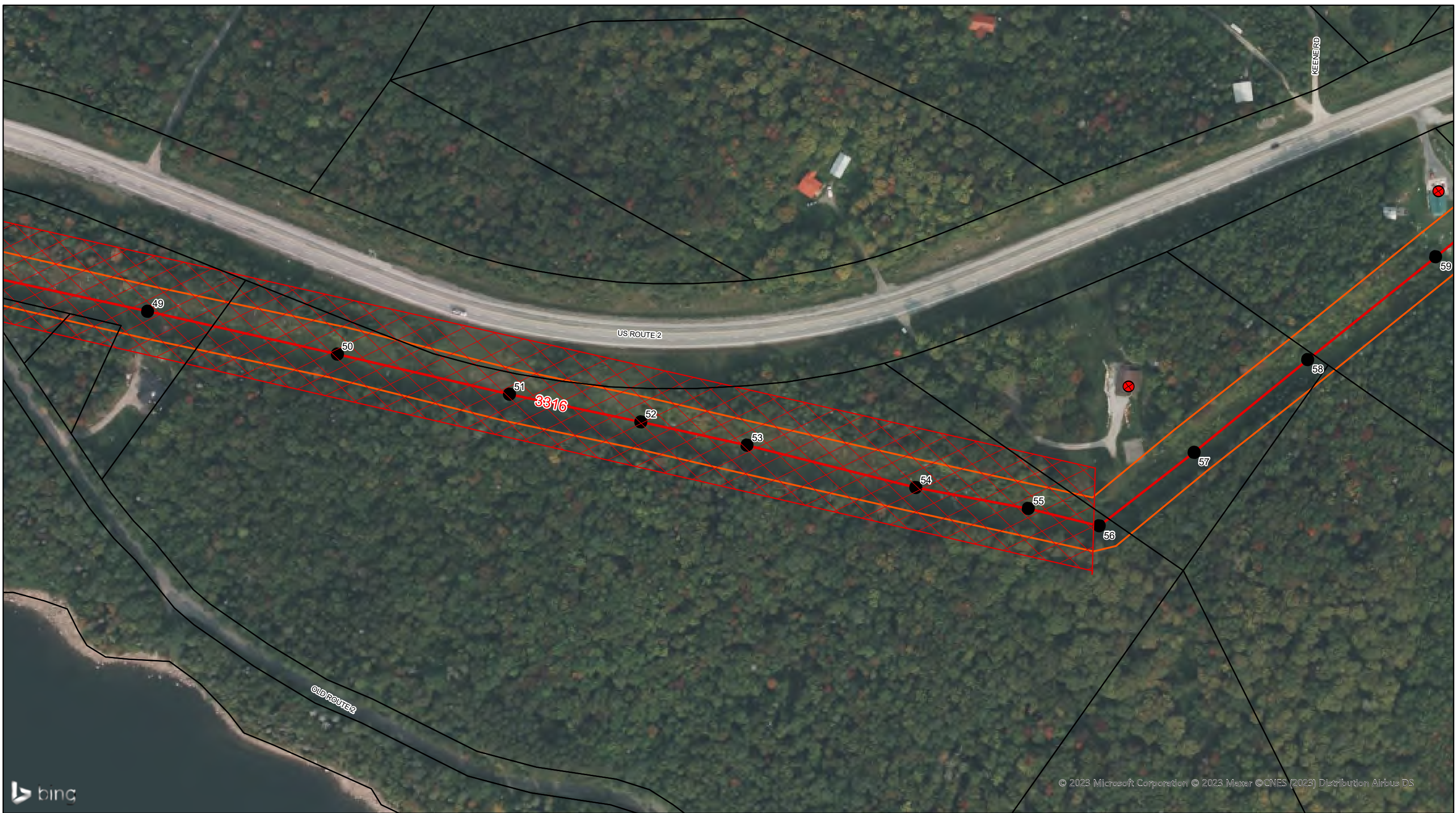
© 2023 Microsoft Corporation © 2023 Maxar © CNES (2023) Distribution Airbus DS

	FLAT CUT		Removal / Take Down		200ft Gravel Well		Green Mt Power ROW
	FLR + FLAT CUT hwd/swd 12ft +		Special Concern		Ground Water Protection Area		Structure
	FOLIAR SPRAY		Well Location		Town Line		Transmission Line
	Required Contac - Customer		Public Well		Tax Parcel		Threatened and Endangered Species - BMPs
	Priority Location		200ft Well Buffer		State Forest		No Herbicide Requested



MARSHFIELD to COMERFORD
Line# 3316 34.5 kV

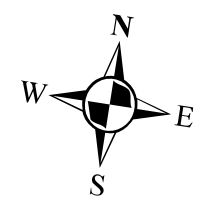
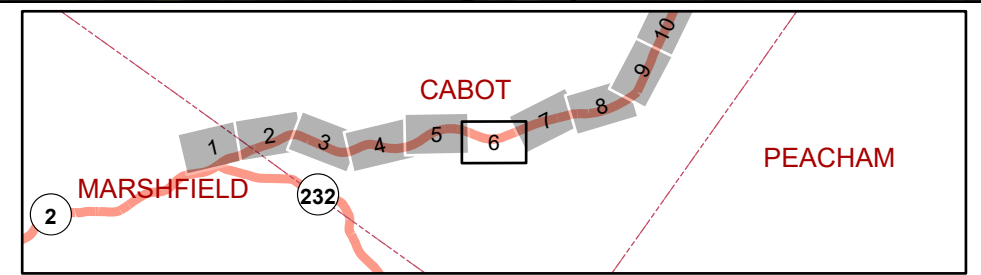




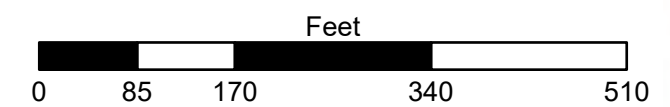
bing

© 2023 Microsoft Corporation © 2023 Maxar © CNES (2023) Distribution Airbus DS

	FLAT CUT		Removal / Take Down		200ft Gravel Well		Green Mt Power ROW
	FLR + FLAT CUT hwd/swd 12ft +		Special Concern		Ground Water Protection Area		Structure
	FOLIAR SPRAY		Well Location		Town Line		Transmission Line
	Required Contac - Customer		Public Well		Tax Parcel		Threatened and Endangered Species - BMPs
	Priority Location		200ft Well Buffer		State Forest		No Herbicide Requested

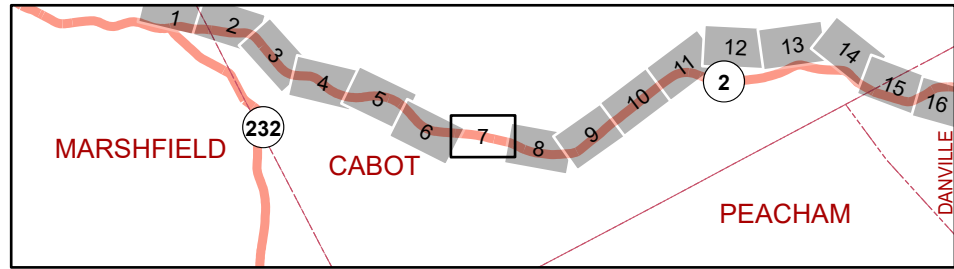


MARSHFIELD to COMERFORD
Line# 3316 34.5 kV

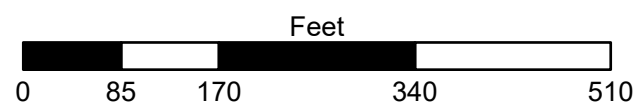




	FLAT CUT		Removal / Take Down		200ft Gravel Well		Green Mt Power ROW
	FLR + FLAT CUT hwd/swd 12ft +		Special Concern		Ground Water Protection Area		Structure
	FOLIAR SPRAY		Well Location		Town Line		Transmission Line
	Required Contac - Customer		Public Well		Tax Parcel		Threatened and Endangered Species - BMPs
	Priority Location		200ft Well Buffer		State Forest		No Herbicide Requested

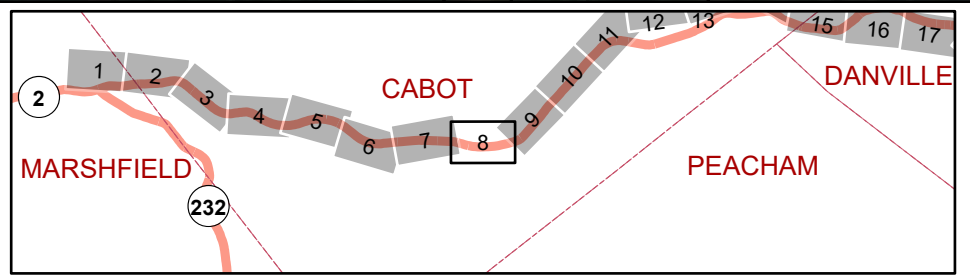


MARSHFIELD to COMERFORD
Line# 3316 34.5 kV

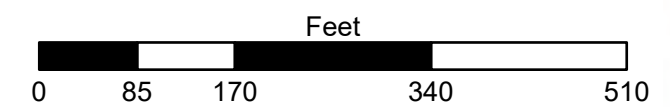




	FLAT CUT		Removal / Take Down		200ft Gravel Well		Green Mt Power ROW
	FLR + FLAT CUT hwd/swd 12ft +		Special Concern		Ground Water Protection Area		Structure
	FOLIAR SPRAY		Well Location		Town Line		Transmission Line
	Required Contac - Customer		Public Well		Tax Parcel		Threatened and Endangered Species - BMPs
	Priority Location		200ft Well Buffer		State Forest		No Herbicide Requested

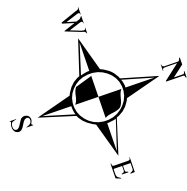
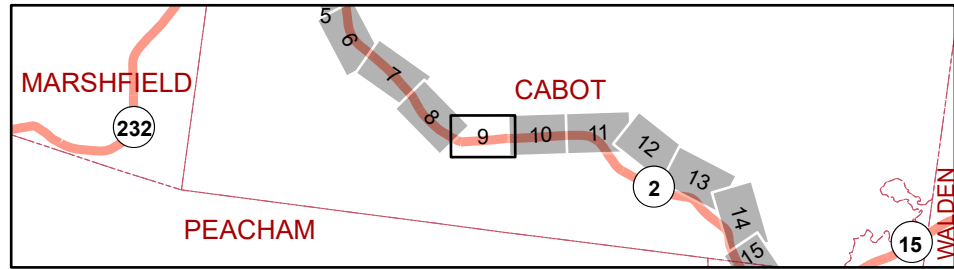


MARSHFIELD to COMERFORD
Line# 3316 34.5 kV

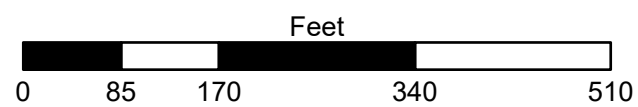




	FLAT CUT		Removal / Take Down		200ft Gravel Well		Green Mt Power ROW
	FLR + FLAT CUT hwd/swd 12ft +		Special Concern		Ground Water Protection Area		Structure
	FOLIAR SPRAY		Well Location		Town Line		Transmission Line
	Required Contac - Customer		Public Well		Tax Parcel		Threatened and Endangered Species - BMPs
	Priority Location		200ft Well Buffer		State Forest		No Herbicide Requested

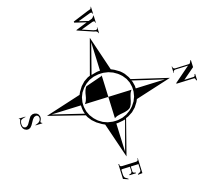
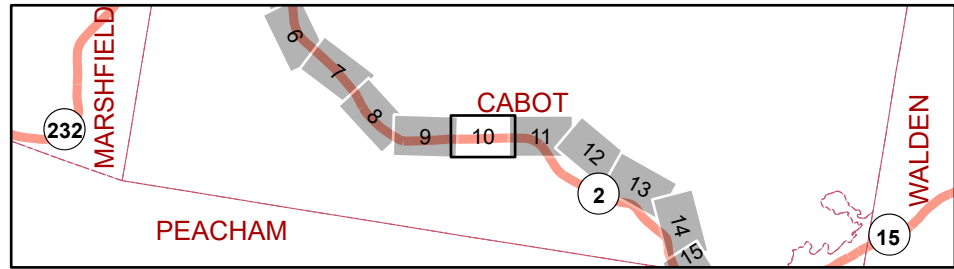


MARSHFIELD to COMERFORD
Line# 3316 34.5 kV

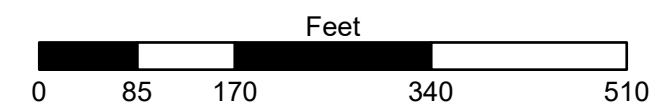


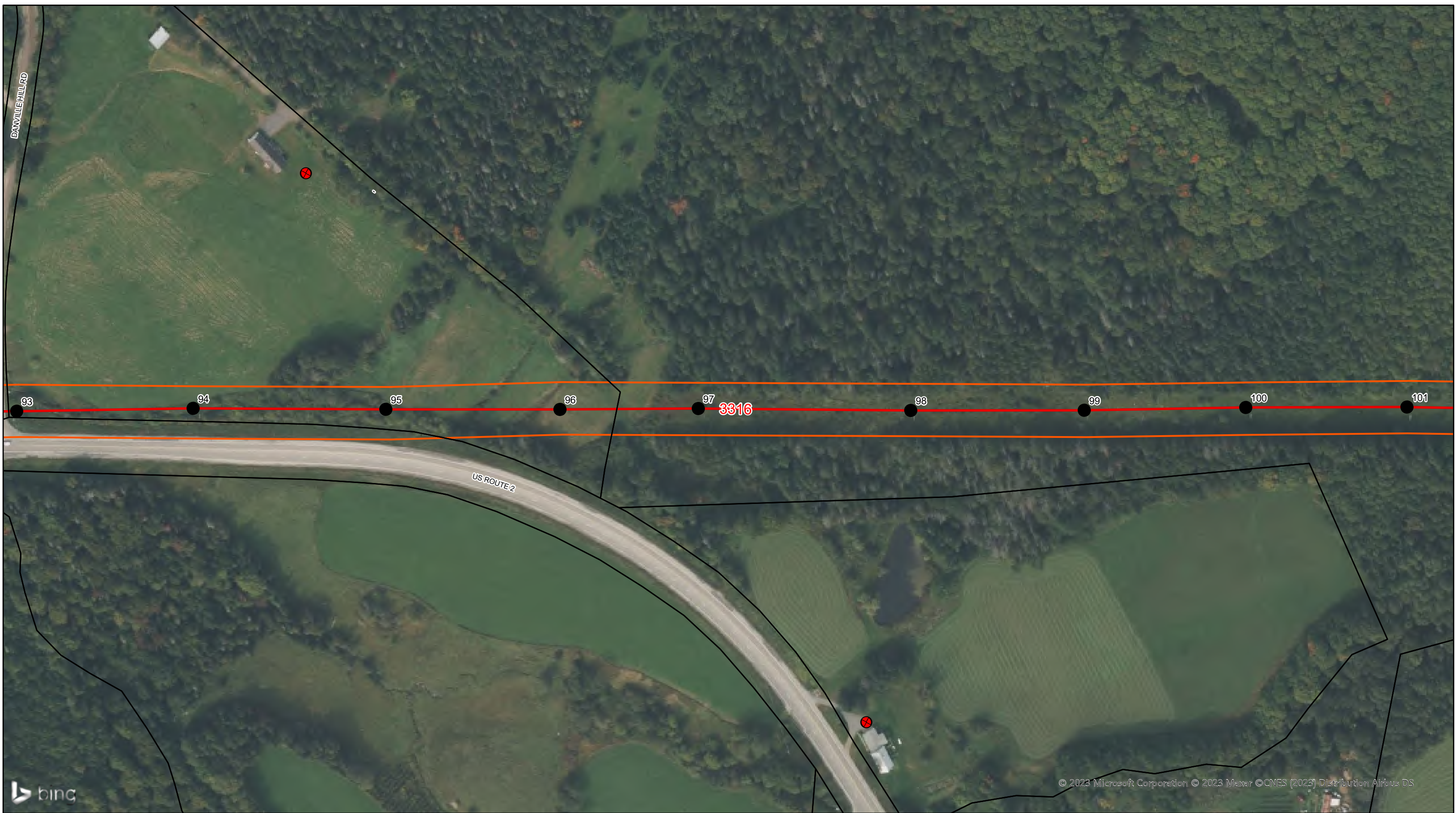


FLAT CUT	Removal / Take Down	200ft Gravel Well	Green Mt Power ROW
FLR + FLAT CUT hwd/swd 12ft +	Special Concern	Ground Water Protection Area	Structure
FOLIAR SPRAY	Well Location	Town Line	Transmission Line
Required Contac - Customer	Public Well	Tax Parcel	Threatened and Endangered Species - BMPs
Priority Location	200ft Well Buffer	State Forest	No Herbicide Requested

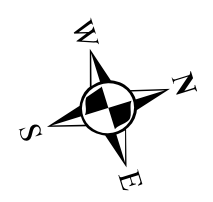
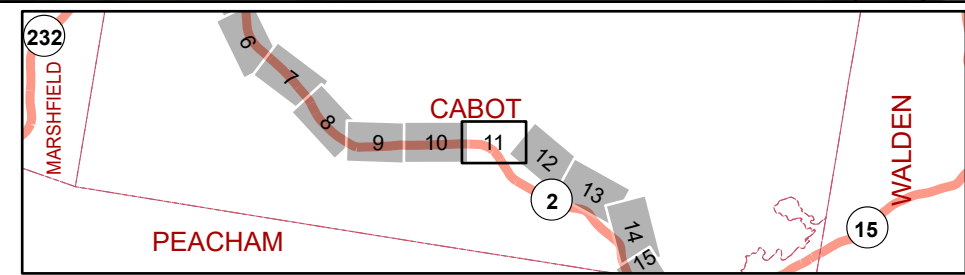


MARSHFIELD to COMERFORD
Line# 3316 34.5 kV





	FLAT CUT		Removal / Take Down		200ft Gravel Well		Green Mt Power ROW
	FLR + FLAT CUT hwd/swd 12ft +		Special Concern		Ground Water Protection Area		Structure
	FOLIAR SPRAY		Well Location		Town Line		Transmission Line
	Required Contac - Customer		Public Well		Tax Parcel		Threatened and Endangered Species - BMPs
	Priority Location		200ft Well Buffer		State Forest		No Herbicide Requested



MARSHFIELD to COMERFORD
 Line# 3316 34.5 kV

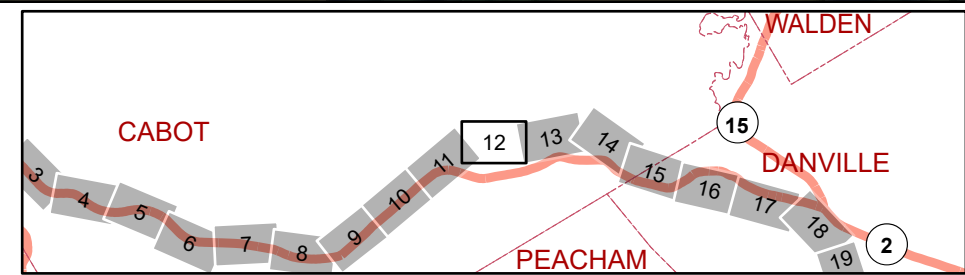
Page 11 of 49

0 85 170 340 510
 Feet





FLAT CUT	Removal / Take Down	200ft Gravel Well	Green Mt Power ROW
FLR + FLAT CUT hwd/swd 12ft +	Special Concern	Ground Water Protection Area	Structure
FOLIAR SPRAY	Well Location	Town Line	Transmission Line
Required Contac - Customer	Public Well	Tax Parcel	Threatened and Endangered Species - BMPs
Priority Location	200ft Well Buffer	State Forest	No Herbicide Requested

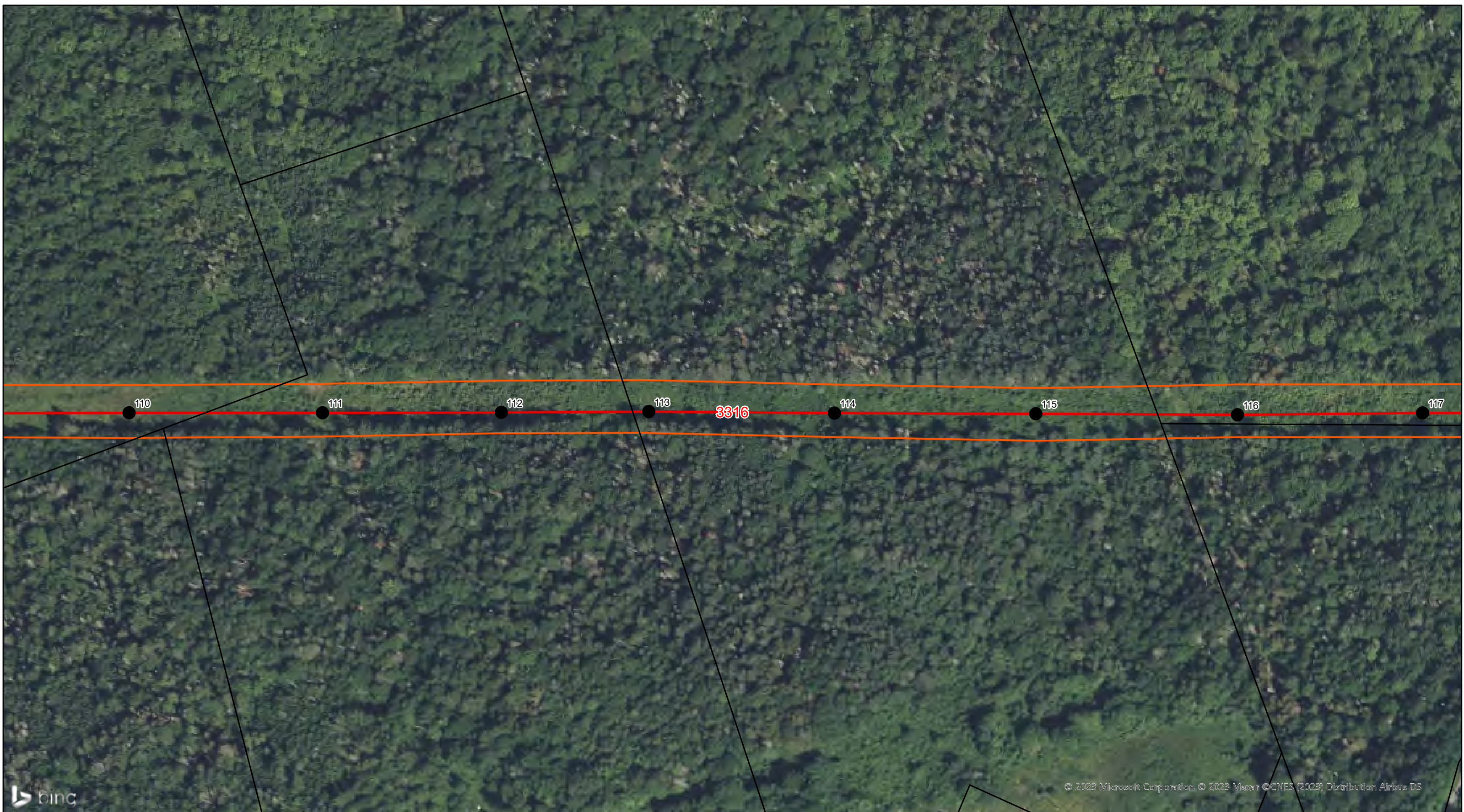


MARSHFIELD to COMERFORD
 Line# 3316 34.5 kV

Feet



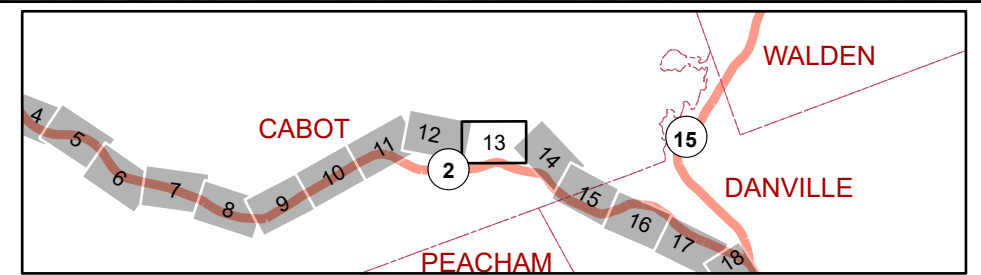
© 2023 Microsoft Corporation © 2023 Maxar © CNES (2023) Distribution Airbus DS



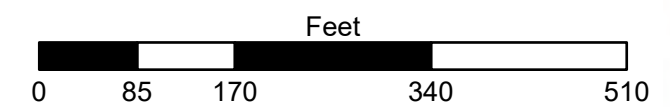
bing

© 2023 Microsoft Corporation © 2023 Maxar © CNES (2023) Distribution Airbus DS

FLAT CUT	Removal / Take Down	200ft Gravel Well	Green Mt Power ROW
FLR + FLAT CUT hwd/swd 12ft +	Special Concern	Ground Water Protection Area	Structure
FOLIAR SPRAY	Well Location	Town Line	Transmission Line
Required Contac - Customer	Public Well	Tax Parcel	Threatened and Endangered Species - BMPs
Priority Location	200ft Well Buffer	State Forest	No Herbicide Requested

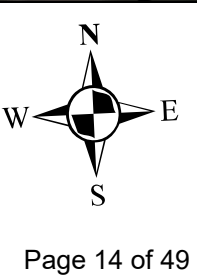
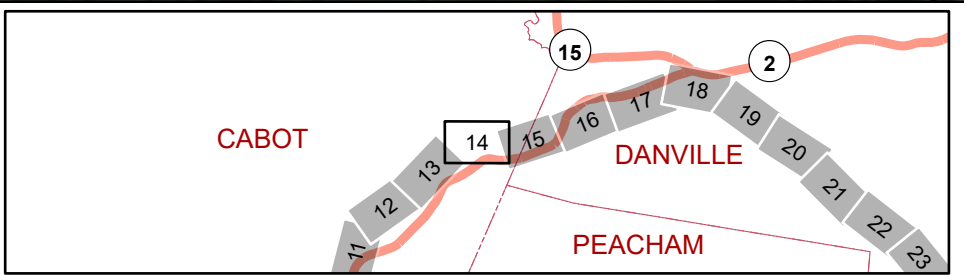


MARSHFIELD to COMERFORD
Line# 3316 34.5 kV





FLAT CUT	Removal / Take Down	200ft Gravel Well	Green Mt Power ROW
FLR + FLAT CUT hwd/swd 12ft +	Special Concern	Ground Water Protection Area	Structure
FOLIAR SPRAY	Well Location	Town Line	Transmission Line
Required Contac - Customer	Public Well	Tax Parcel	Threatened and Endangered Species - BMPs
Priority Location	200ft Well Buffer	State Forest	No Herbicide Requested



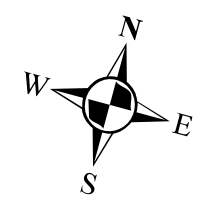
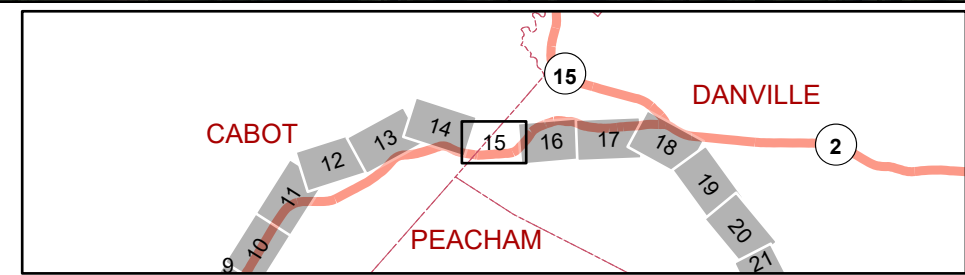
MARSHFIELD to COMERFORD
 Line# 3316 34.5 kV

Feet
 0 85 170 340 510

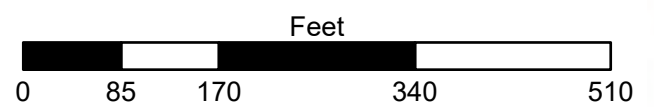




	FLAT CUT		Removal / Take Down		200ft Gravel Well		Green Mt Power ROW
	FLR + FLAT CUT hwd/swd 12ft +		Special Concern		Ground Water Protection Area		Structure
	FOLIAR SPRAY		Well Location		Town Line		Transmission Line
	Required Contac - Customer		Public Well		Tax Parcel		Threatened and Endangered Species - BMPs
	Priority Location		200ft Well Buffer		State Forest		No Herbicide Requested

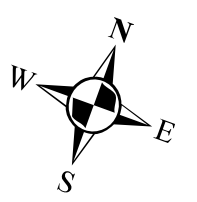
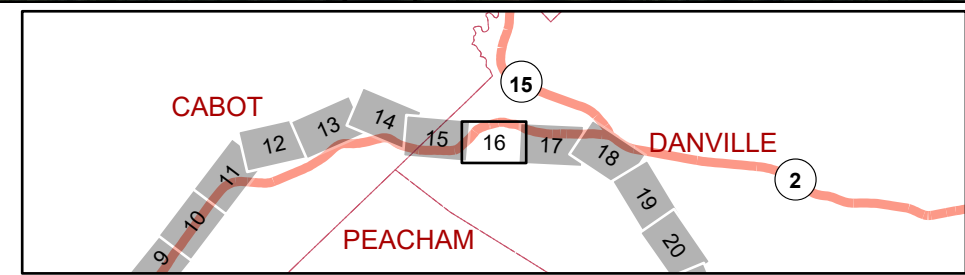


MARSHFIELD to COMERFORD
 Line# 3316 34.5 kV

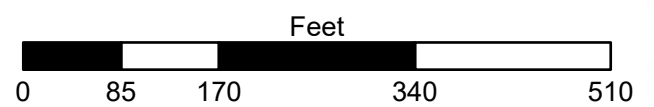


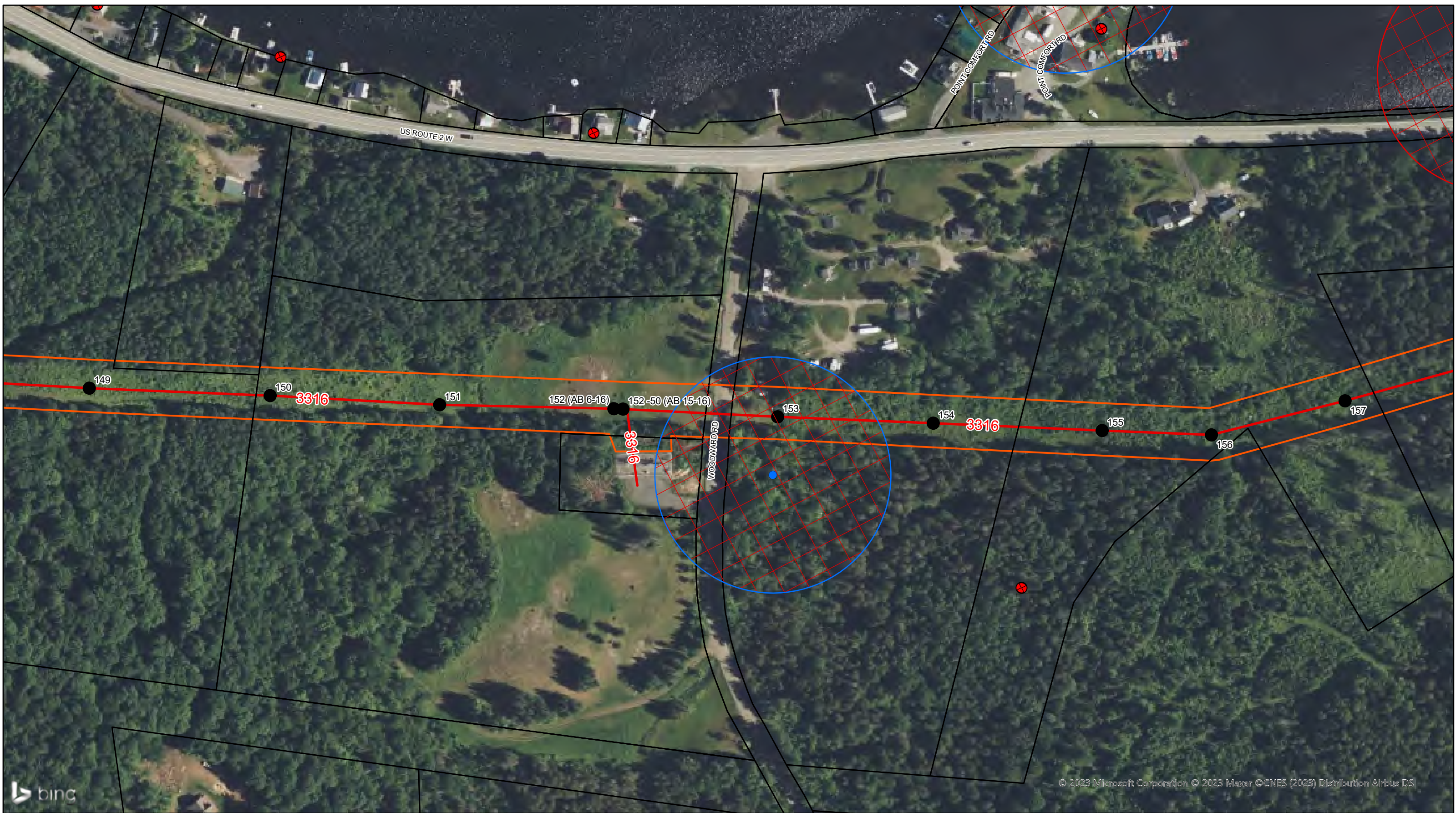


	FLAT CUT		Removal / Take Down		200ft Gravel Well		Green Mt Power ROW
	FLR + FLAT CUT hwd/swd 12ft +		Special Concern		Ground Water Protection Area		Structure
	FOLIAR SPRAY		Well Location		Town Line		Transmission Line
	Required Contac - Customer		Public Well		Tax Parcel		Threatened and Endangered Species - BMPs
	Priority Location		200ft Well Buffer		State Forest		No Herbicide Requested

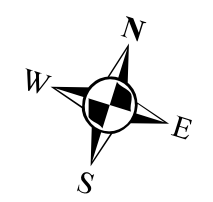
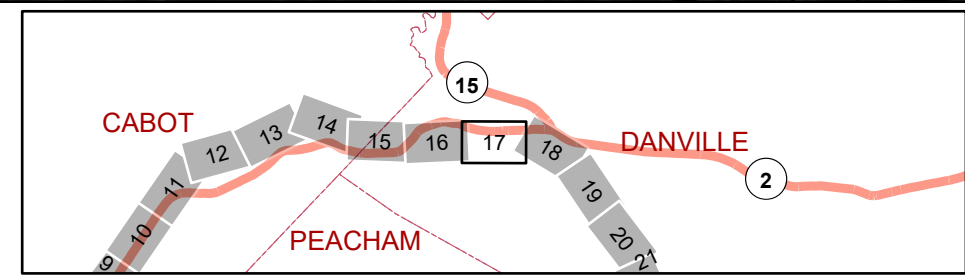


MARSHFIELD to COMERFORD
Line# 3316 34.5 kV





FLAT CUT	Removal / Take Down	200ft Gravel Well	Green Mt Power ROW
FLR + FLAT CUT hwd/swd 12ft +	Special Concern	Ground Water Protection Area	Structure
FOLIAR SPRAY	Well Location	Town Line	Transmission Line
Required Contact - Customer	Public Well	Tax Parcel	Threatened and Endangered Species - BMPs
Priority Location	200ft Well Buffer	State Forest	No Herbicide Requested



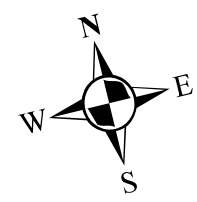
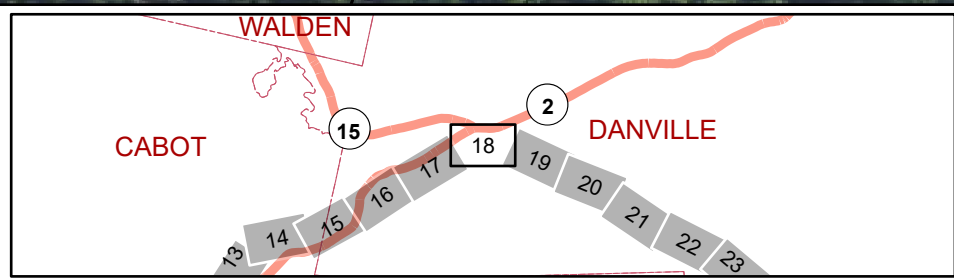
MARSHFIELD to COMERFORD
 Line# 3316 34.5 kV

Feet

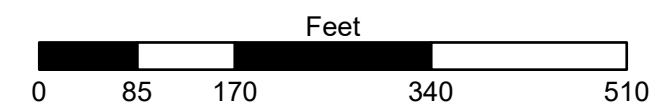




FLAT CUT	Removal / Take Down	200ft Gravel Well	Green Mt Power ROW
FLR + FLAT CUT hwd/swd 12ft +	Special Concern	Ground Water Protection Area	Structure
FOLIAR SPRAY	Well Location	Town Line	Transmission Line
Required Contac - Customer	Public Well	Tax Parcel	Threatened and Endangered Species - BMPs
Priority Location	200ft Well Buffer	State Forest	No Herbicide Requested

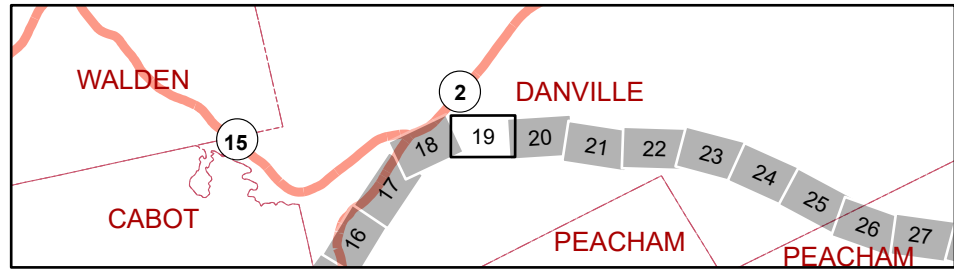


MARSHFIELD to COMERFORD
Line# 3316 34.5 kV

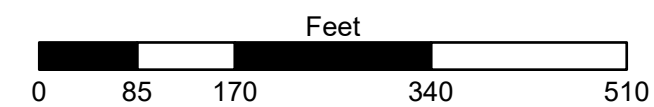




FLAT CUT	Removal / Take Down	200ft Gravel Well	Green Mt Power ROW
FLR + FLAT CUT hwd/swd 12ft +	Special Concern	Ground Water Protection Area	Structure
FOLIAR SPRAY	Well Location	Town Line	Transmission Line
Required Contac - Customer	Public Well	Tax Parcel	Threatened and Endangered Species - BMPs
Priority Location	200ft Well Buffer	State Forest	No Herbicide Requested

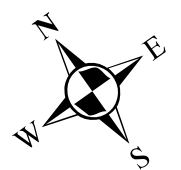
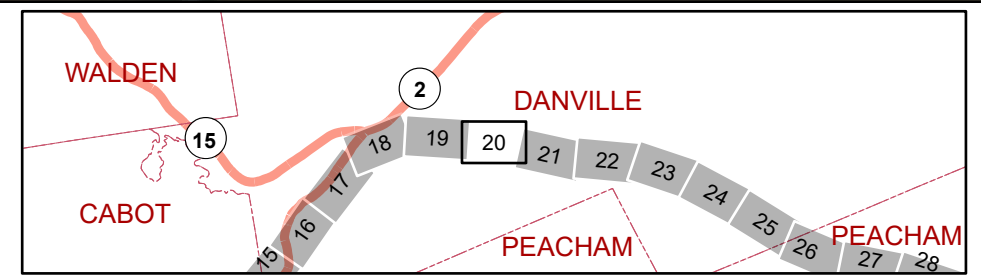


MARSHFIELD to COMERFORD
Line# 3316 34.5 kV

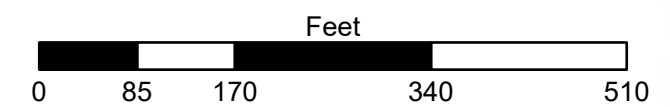




	FLAT CUT		Removal / Take Down		200ft Gravel Well		Green Mt Power ROW
	FLR + FLAT CUT hwd/swd 12ft +		Special Concern		Ground Water Protection Area		Structure
	FOLIAR SPRAY		Well Location		Town Line		Transmission Line
	Required Contac - Customer		Public Well		Tax Parcel		Threatened and Endangered Species - BMPs
	Priority Location		200ft Well Buffer		State Forest		No Herbicide Requested

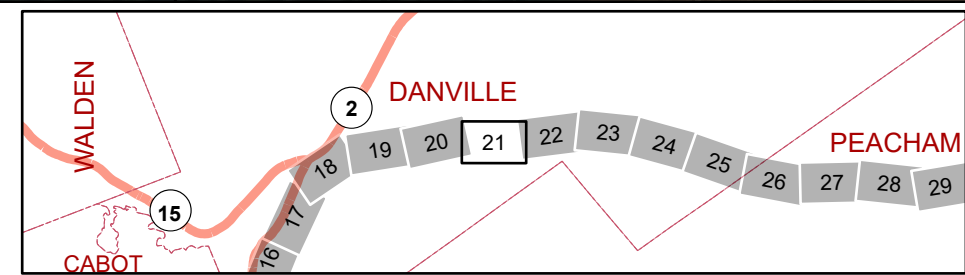


MARSHFIELD to COMERFORD
Line# 3316 34.5 kV





	FLAT CUT		Removal / Take Down		200ft Gravel Well		Green Mt Power ROW
	FLR + FLAT CUT hwd/swd 12ft +		Special Concern		Ground Water Protection Area		Structure
	FOLIAR SPRAY		Well Location		Town Line		Transmission Line
	Required Contac - Customer		Public Well		Tax Parcel		Threatened and Endangered Species - BMPs
	Priority Location		200ft Well Buffer		State Forest		No Herbicide Requested



MARSHFIELD to COMERFORD
 Line# 3316 34.5 kV

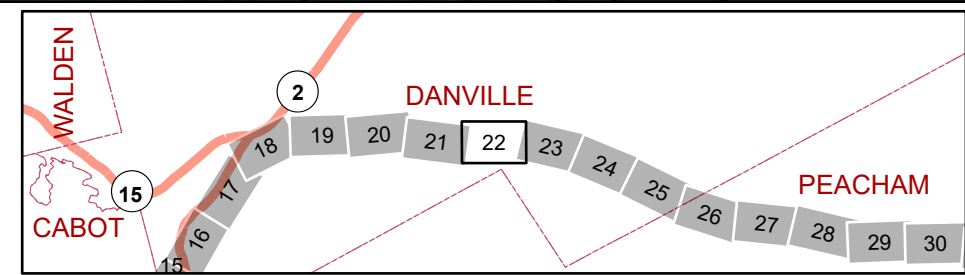
Feet





bing © 2023 Microsoft Corporation © 2023 Maxar © CNES (2023) Distribution Airbus DS

	FLAT CUT		Removal / Take Down		200ft Gravel Well		Green Mt Power ROW
	FLR + FLAT CUT hwd/swd 12ft +		Special Concern		Ground Water Protection Area		Structure
	FOLIAR SPRAY		Well Location		Town Line		Transmission Line
	Required Contac - Customer		Public Well		Tax Parcel		Threatened and Endangered Species - BMPs
	Priority Location		200ft Well Buffer		State Forest		No Herbicide Requested



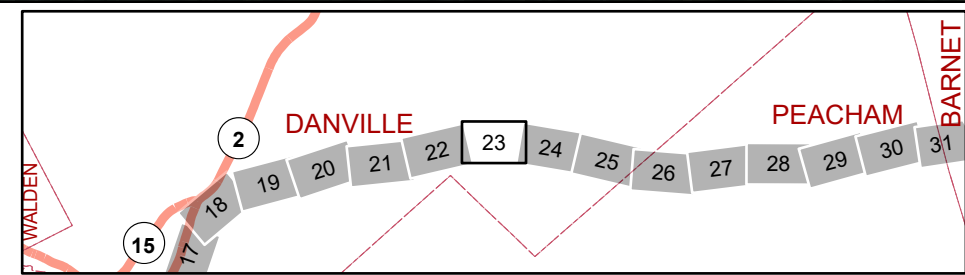
MARSHFIELD to COMERFORD
 Line# 3316 34.5 kV

Feet





FLAT CUT	Removal / Take Down	200ft Gravel Well	Green Mt Power ROW
FLR + FLAT CUT hwd/swd 12ft +	Special Concern	Ground Water Protection Area	Structure
FOLIAR SPRAY	Well Location	Town Line	Transmission Line
Required Contac - Customer	Public Well	Tax Parcel	Threatened and Endangered Species - BMPs
Priority Location	200ft Well Buffer	State Forest	No Herbicide Requested



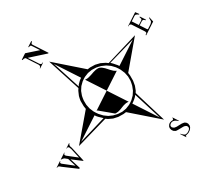
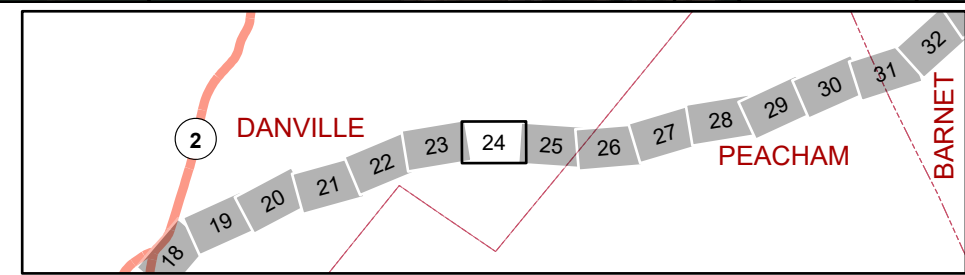
MARSHFIELD to COMERFORD
 Line# 3316 34.5 kV

Feet





	FLAT CUT		Removal / Take Down		200ft Gravel Well		Green Mt Power ROW
	FLR + FLAT CUT hwd/swd 12ft +		Special Concern		Ground Water Protection Area		Structure
	FOLIAR SPRAY		Well Location		Town Line		Transmission Line
	Required Contac - Customer		Public Well		Tax Parcel		Threatened and Endangered Species - BMPs
	Priority Location		200ft Well Buffer		State Forest		No Herbicide Requested



MARSHFIELD to COMERFORD
 Line# 3316 34.5 kV

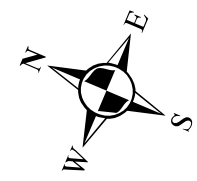
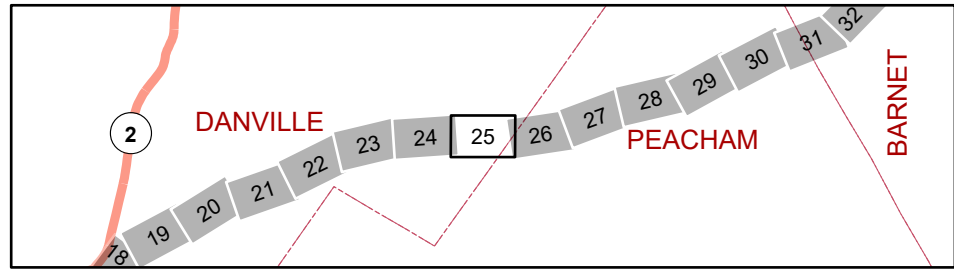
Feet

0 85 170 340 510

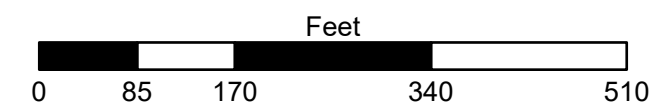




FLAT CUT	Removal / Take Down	200ft Gravel Well	Green Mt Power ROW
FLR + FLAT CUT hwd/swd 12ft +	Special Concern	Ground Water Protection Area	Structure
FOLIAR SPRAY	Well Location	Town Line	Transmission Line
Required Contac - Customer	Public Well	Tax Parcel	Threatened and Endangered Species - BMPs
Priority Location	200ft Well Buffer	State Forest	No Herbicide Requested

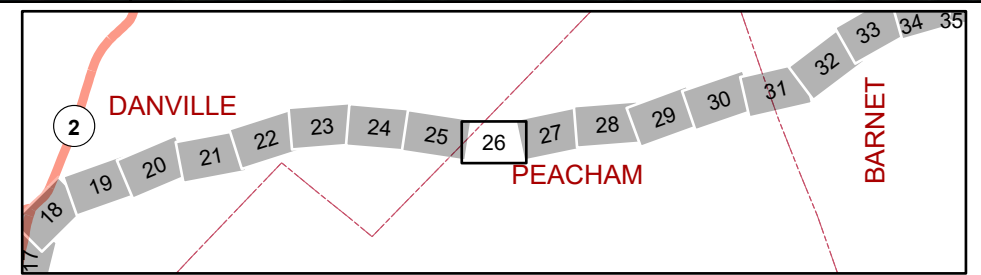


MARSHFIELD to COMERFORD
Line# 3316 34.5 kV

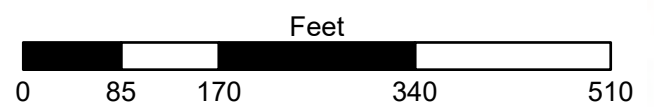




	FLAT CUT		Removal / Take Down		200ft Gravel Well		Green Mt Power ROW
	FLR + FLAT CUT hwd/swd 12ft +		Special Concern		Ground Water Protection Area		Structure
	FOLIAR SPRAY		Well Location		Town Line		Transmission Line
	Required Contac - Customer		Public Well		Tax Parcel		Threatened and Endangered Species - BMPs
	Priority Location		200ft Well Buffer		State Forest		No Herbicide Requested



MARSHFIELD to COMERFORD
Line# 3316 34.5 kV

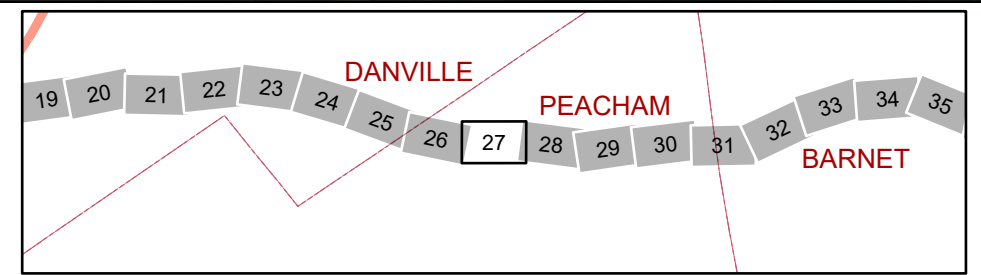




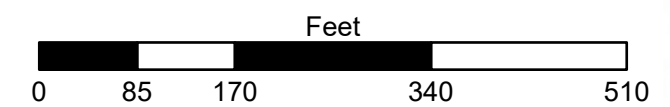
bing

© 2023 Microsoft Corporation © 2023 Maxar © CNES (2023) Distribution Airbus DS

	FLAT CUT		Removal / Take Down		200ft Gravel Well		Green Mt Power ROW
	FLR + FLAT CUT hwd/swd 12ft +		Special Concern		Ground Water Protection Area		Structure
	FOLIAR SPRAY		Well Location		Town Line		Transmission Line
	Required Contac - Customer		Public Well		Tax Parcel		Threatened and Endangered Species - BMPs
	Priority Location		200ft Well Buffer		State Forest		No Herbicide Requested



MARSHFIELD to COMERFORD
Line# 3316 34.5 kV

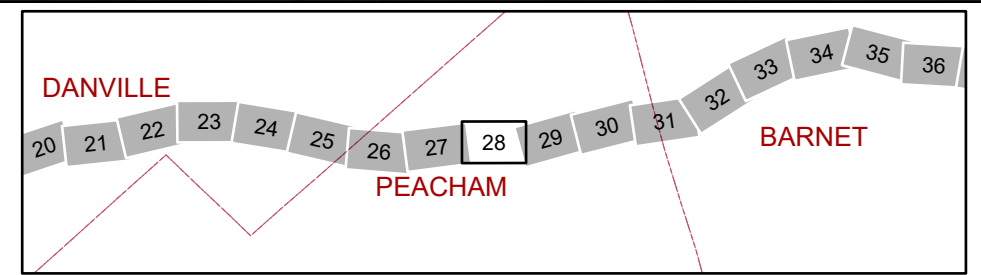




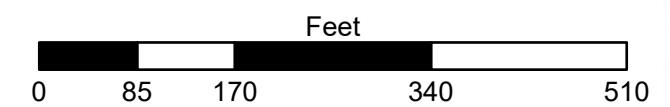
bing

© 2023 Microsoft Corporation © 2023 Maxar © CNES (2023) Distribution Airbus DS

FLAT CUT	Removal / Take Down	200ft Gravel Well	Green Mt Power ROW
FLR + FLAT CUT hwd/swd 12ft +	Special Concern	Ground Water Protection Area	Structure
FOLIAR SPRAY	Well Location	Town Line	Transmission Line
Required Contac - Customer	Public Well	Tax Parcel	Threatened and Endangered Species - BMPs
Priority Location	200ft Well Buffer	State Forest	No Herbicide Requested



MARSHFIELD to COMERFORD
Line# 3316 34.5 kV

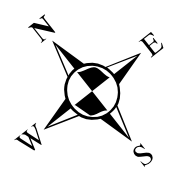
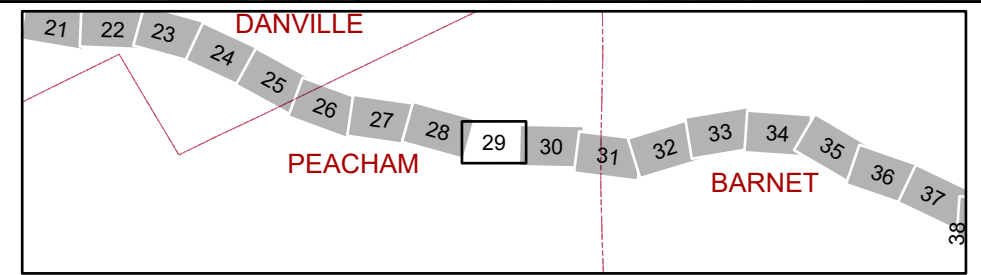




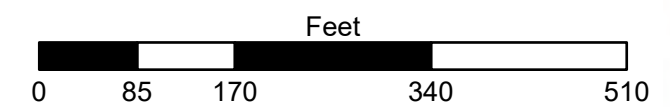
bing

© 2023 Microsoft Corporation © 2023 Maxar © CNES (2023) Distribution Airbus DS

FLAT CUT	Removal / Take Down	200ft Gravel Well	Green Mt Power ROW
FLR + FLAT CUT hwd/swd 12ft +	Special Concern	Ground Water Protection Area	Structure
FOLIAR SPRAY	Well Location	Town Line	Transmission Line
Required Contac - Customer	Public Well	Tax Parcel	Threatened and Endangered Species - BMPs
Priority Location	200ft Well Buffer	State Forest	No Herbicide Requested



MARSHFIELD to COMERFORD
Line# 3316 34.5 kV

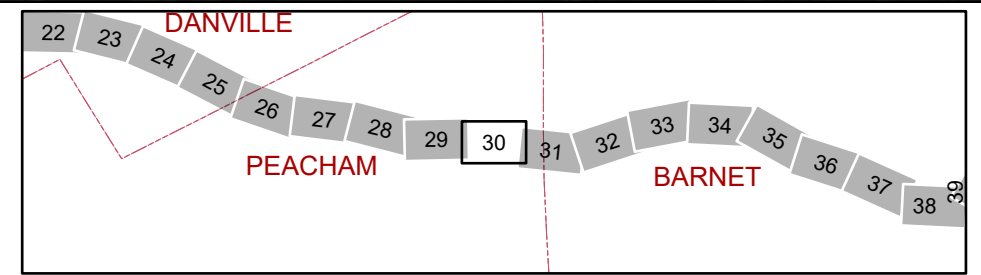




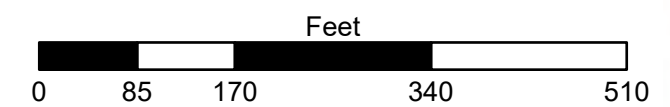
bing

© 2023 Microsoft Corporation © 2023 Maxar © CNES (2023) Distribution Airbus DS

	FLAT CUT		Removal / Take Down		200ft Gravel Well		Green Mt Power ROW
	FLR + FLAT CUT hwd/swd 12ft +		Special Concern		Ground Water Protection Area		Structure
	FOLIAR SPRAY		Well Location		Town Line		Transmission Line
	Required Contact - Customer		Public Well		Tax Parcel		Threatened and Endangered Species - BMPs
	Priority Location		200ft Well Buffer		State Forest		No Herbicide Requested

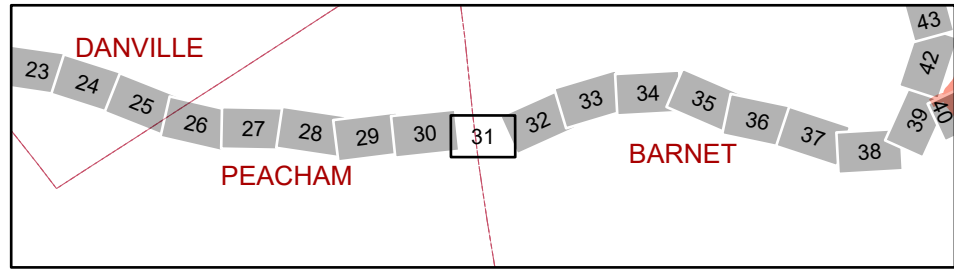


MARSHFIELD to COMERFORD
Line# 3316 34.5 kV

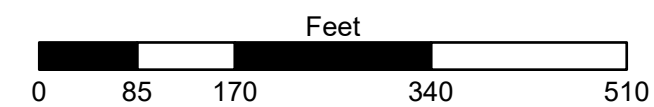




	FLAT CUT		Removal / Take Down		200ft Gravel Well		Green Mt Power ROW
	FLR + FLAT CUT hwd/swd 12ft +		Special Concern		Ground Water Protection Area		Structure
	FOLIAR SPRAY		Well Location		Town Line		Transmission Line
	Required Contac - Customer		Public Well		Tax Parcel		Threatened and Endangered Species - BMPs
	Priority Location		200ft Well Buffer		State Forest		No Herbicide Requested

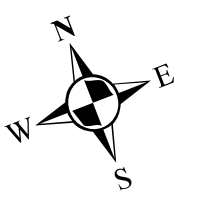
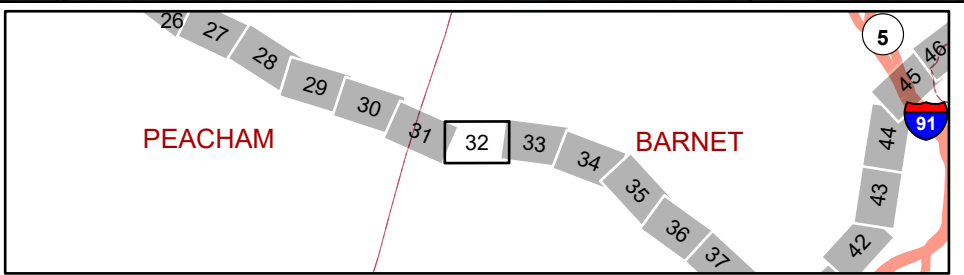


MARSHFIELD to COMERFORD
Line# 3316 34.5 kV

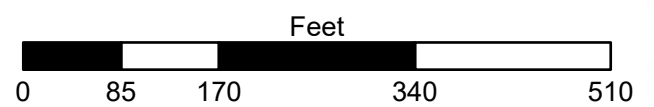




FLAT CUT	Removal / Take Down	200ft Gravel Well	Green Mt Power ROW
FLR + FLAT CUT hwd/swd 12ft +	Special Concern	Ground Water Protection Area	Structure
FOLIAR SPRAY	Well Location	Town Line	Transmission Line
Required Contac - Customer	Public Well	Tax Parcel	Threatened and Endangered Species - BMPs
Priority Location	200ft Well Buffer	State Forest	No Herbicide Requested

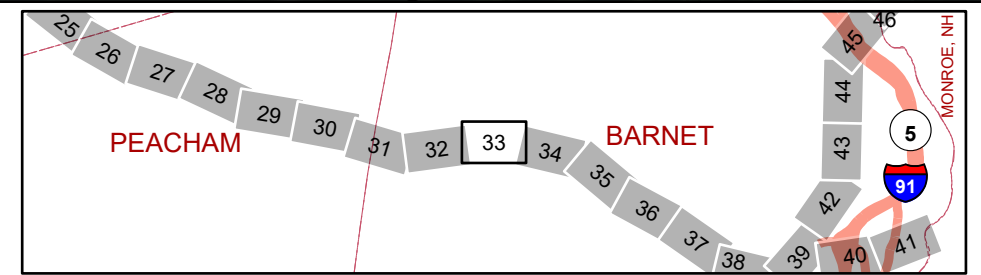


MARSHFIELD to COMERFORD
Line# 3316 34.5 kV

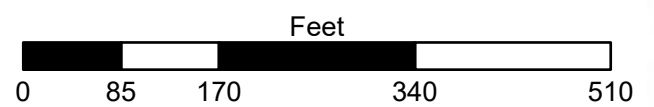




	FLAT CUT		Removal / Take Down		200ft Gravel Well		Green Mt Power ROW
	FLR + FLAT CUT hwd/swd 12ft +		Special Concern		Ground Water Protection Area		Structure
	FOLIAR SPRAY		Well Location		Town Line		Transmission Line
	Required Contact - Customer		Public Well		Tax Parcel		Threatened and Endangered Species - BMPs
	Priority Location		200ft Well Buffer		State Forest		No Herbicide Requested



MARSHFIELD to COMERFORD
Line# 3316 34.5 kV

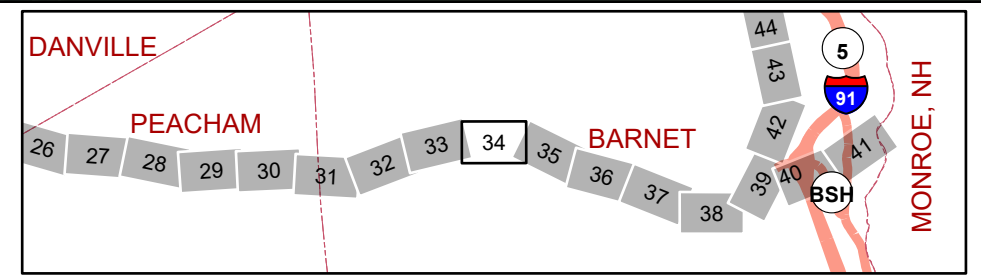




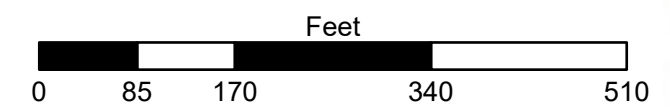
bing

© 2023 Microsoft Corporation © 2023 Maxar © CNES (2023) Distribution Airbus DS

	FLAT CUT		Removal / Take Down		200ft Gravel Well		Green Mt Power ROW
	FLR + FLAT CUT hwd/swd 12ft +		Special Concern		Ground Water Protection Area		Structure
	FOLIAR SPRAY		Well Location		Town Line		Transmission Line
	Required Contac - Customer		Public Well		Tax Parcel		Threatened and Endangered Species - BMPs
	Priority Location		200ft Well Buffer		State Forest		No Herbicide Requested



MARSHFIELD to COMERFORD
Line# 3316 34.5 kV

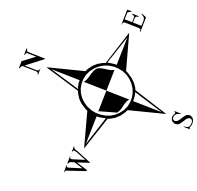
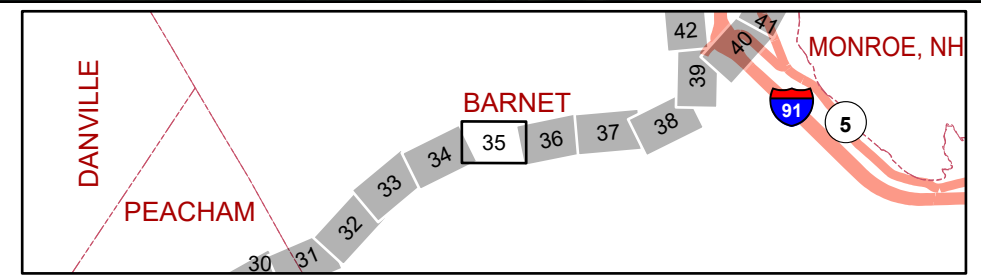




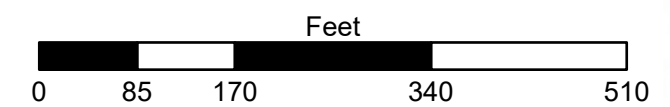
bing

© 2023 Microsoft Corporation © 2023 Maxar © CNES (2023) Distribution Airbus DS

	FLAT CUT		Removal / Take Down		200ft Gravel Well		Green Mt Power ROW
	FLR + FLAT CUT hwd/swd 12ft +		Special Concern		Ground Water Protection Area		Structure
	FOLIAR SPRAY		Well Location		Town Line		Transmission Line
	Required Contac - Customer		Public Well		Tax Parcel		Threatened and Endangered Species - BMPs
	Priority Location		200ft Well Buffer		State Forest		No Herbicide Requested

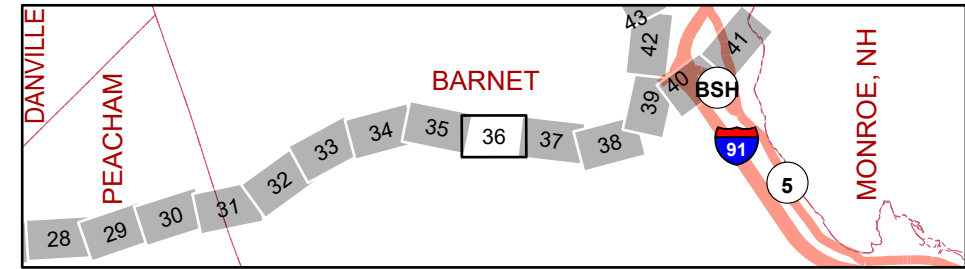


MARSHFIELD to COMERFORD
Line# 3316 34.5 kV

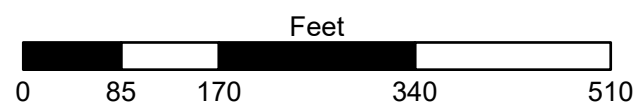


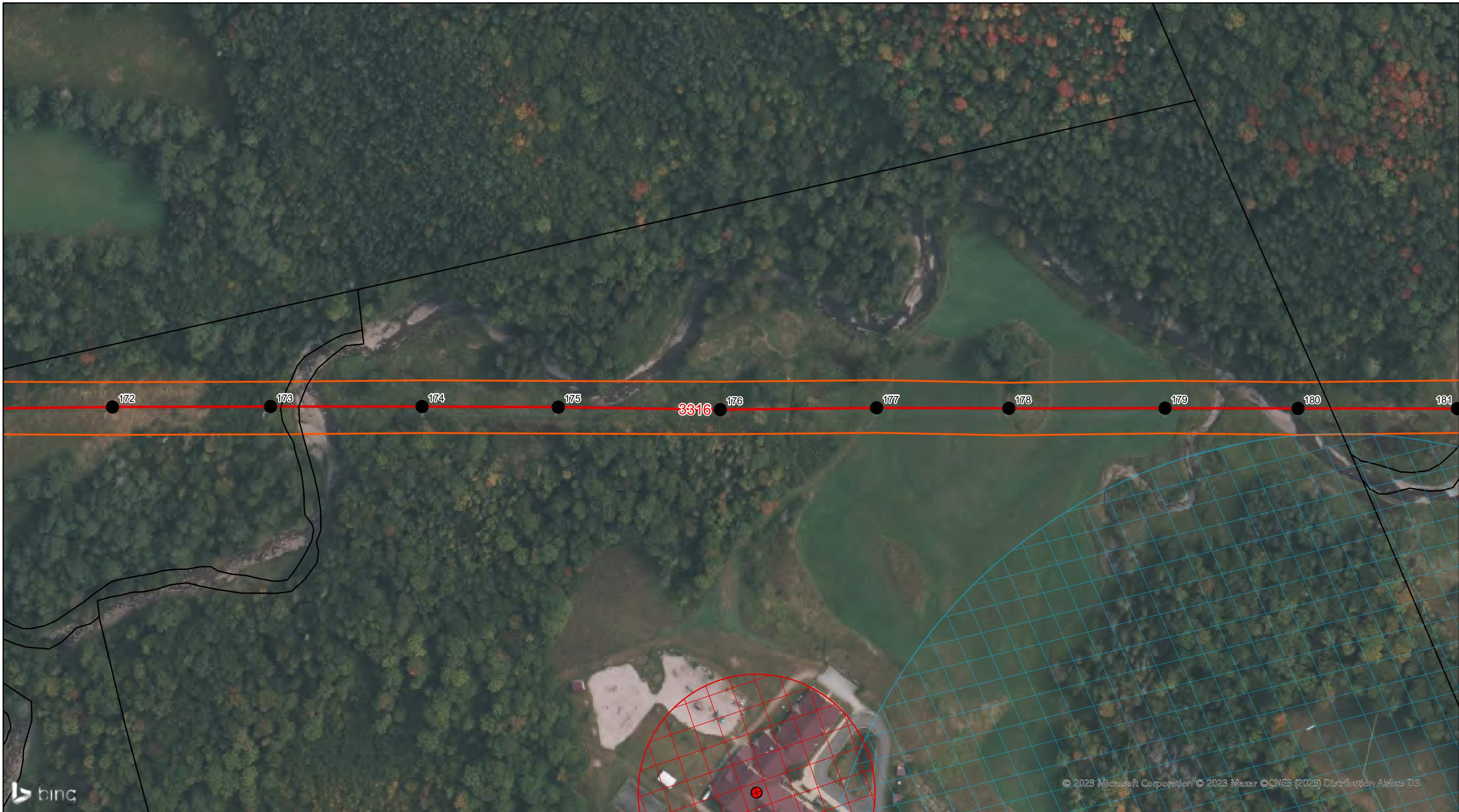


	FLAT CUT		Removal / Take Down		200ft Gravel Well		Green Mt Power ROW
	FLR + FLAT CUT hwd/swd 12ft +		Special Concern		Ground Water Protection Area		Structure
	FOLIAR SPRAY		Well Location		Town Line		Transmission Line
	Required Contact - Customer		Public Well		Tax Parcel		Threatened and Endangered Species - BMPs
	Priority Location		200ft Well Buffer		State Forest		No Herbicide Requested

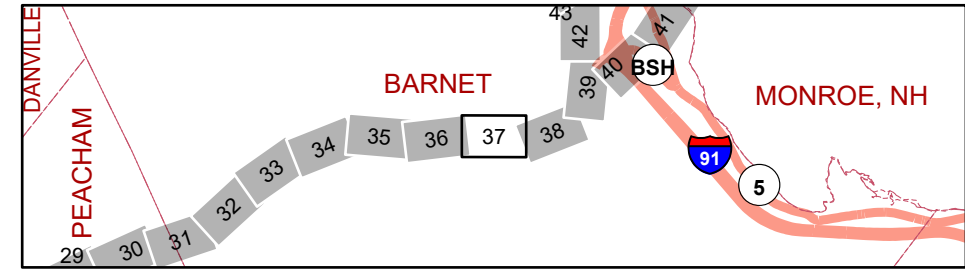


MARSHFIELD to COMERFORD
Line# 3316 34.5 kV

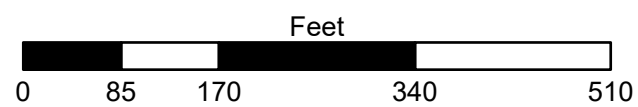




	FLAT CUT		Removal / Take Down		200ft Gravel Well		Green Mt Power ROW
	FLR + FLAT CUT hwd/swd 12ft +		Special Concern		Ground Water Protection Area		Structure
	FOLIAR SPRAY		Well Location		Town Line		Transmission Line
	Required Contac - Customer		Public Well		Tax Parcel		Threatened and Endangered Species - BMPs
	Priority Location		200ft Well Buffer		State Forest		No Herbicide Requested



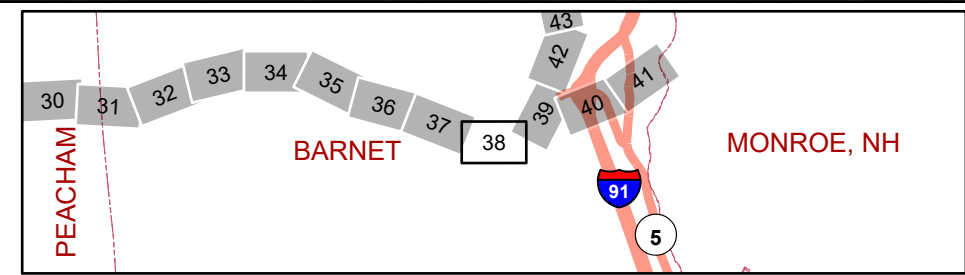
MARSHFIELD to COMERFORD
Line# 3316 34.5 kV



© 2023 Microsoft Corporation © 2023 Maxar © CNES (2023) Distribution Airbus DS



	FLAT CUT		Removal / Take Down		200ft Gravel Well		Green Mt Power ROW
	FLR + FLAT CUT hwd/swd 12ft +		Special Concern		Ground Water Protection Area		Structure
	FOLIAR SPRAY		Well Location		Town Line		Transmission Line
	Required Contac - Customer		Public Well		Tax Parcel		Threatened and Endangered Species - BMPs
	Priority Location		200ft Well Buffer		State Forest		No Herbicide Requested

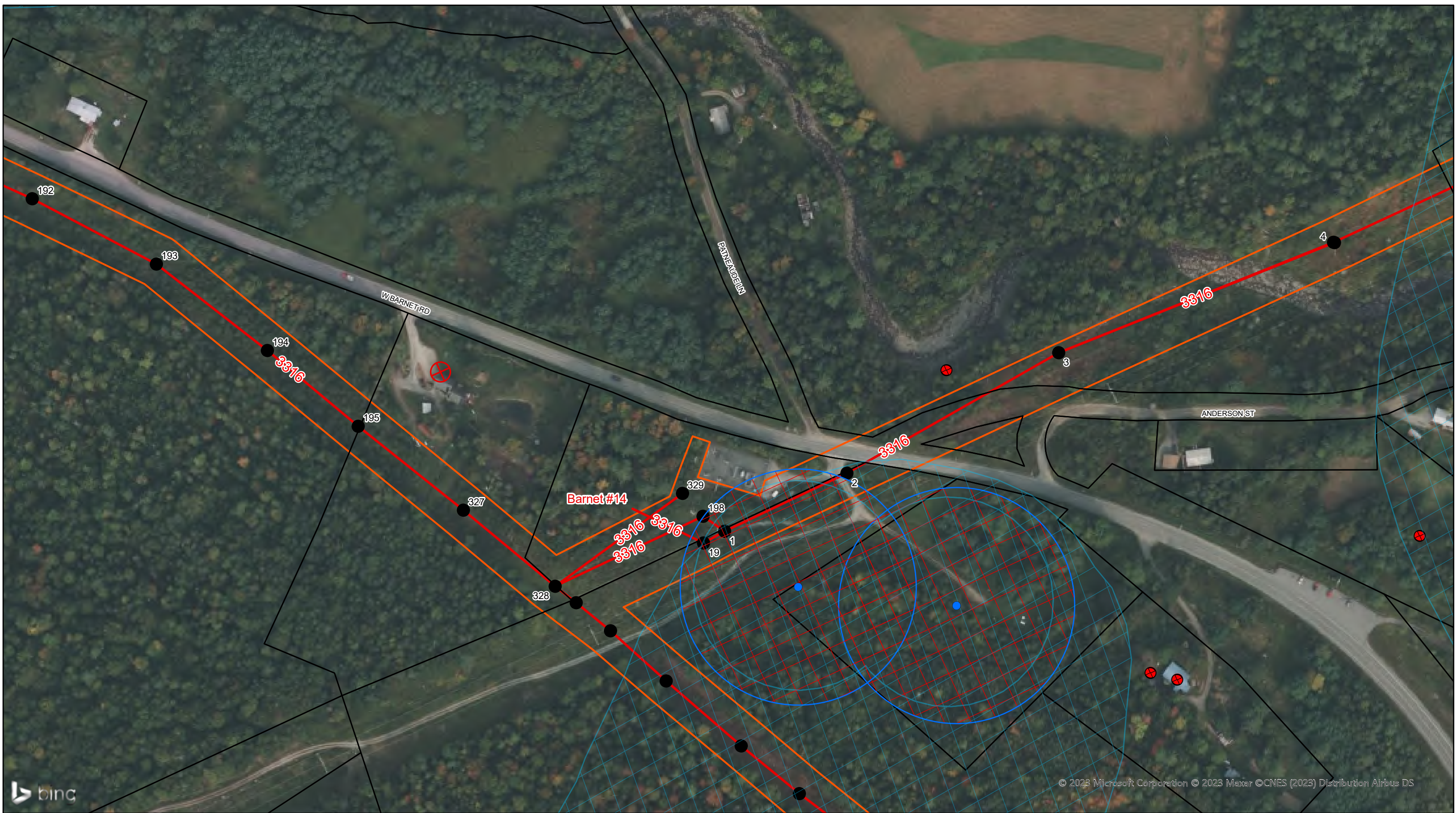


MARSHFIELD to COMERFORD
 Line# 3316 34.5 kV

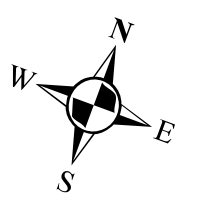
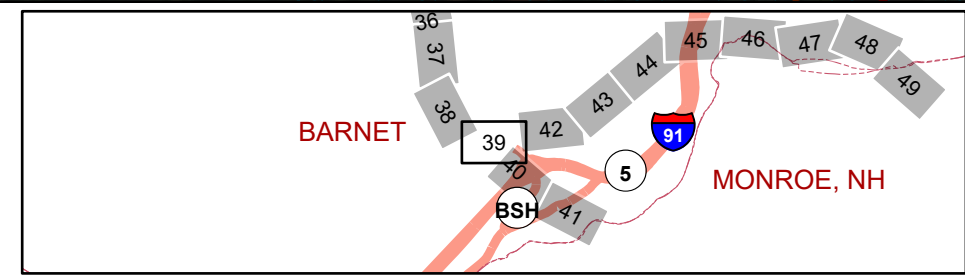
Feet

0 85 170 340 510

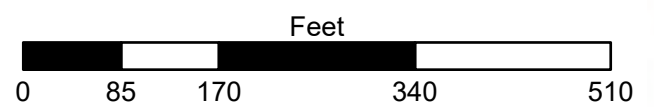




	FLAT CUT		Removal / Take Down		200ft Gravel Well		Green Mt Power ROW
	FLR + FLAT CUT hwd/swd 12ft +		Special Concern		Ground Water Protection Area		Structure
	FOLIAR SPRAY		Well Location		Town Line		Transmission Line
	Required Contac - Customer		Public Well		Tax Parcel		Threatened and Endangered Species - BMPs
	Priority Location		200ft Well Buffer		State Forest		No Herbicide Requested



MARSHFIELD to COMERFORD
Line# 3316 34.5 kV

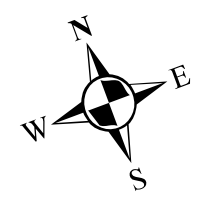
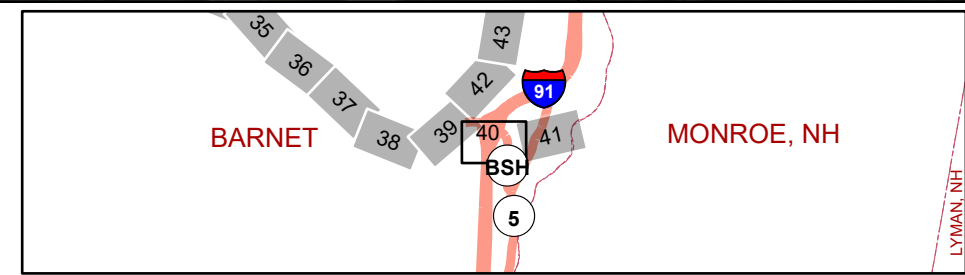




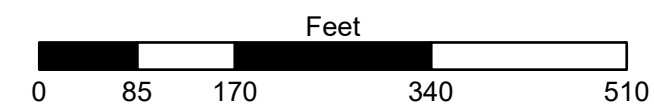
bing

© 2023 Microsoft Corporation © 2023 Maxar © CNES (2023) Distribution Airbus DS

FLAT CUT	Removal / Take Down	200ft Gravel Well	Green Mt Power ROW
FLR + FLAT CUT hwd/swd 12ft +	Special Concern	Ground Water Protection Area	Structure
FOLIAR SPRAY	Well Location	Town Line	Transmission Line
Required Contac - Customer	Public Well	Tax Parcel	Threatened and Endangered Species - BMPs
Priority Location	200ft Well Buffer	State Forest	No Herbicide Requested



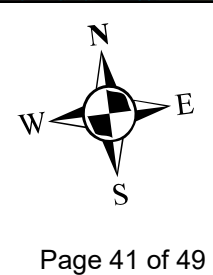
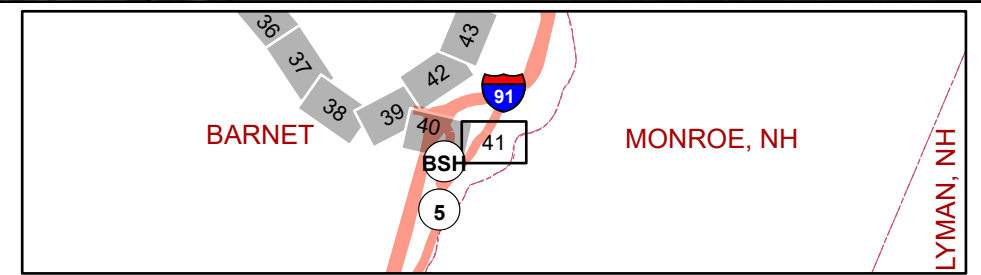
MARSHFIELD to COMERFORD
Line# 3316 34.5 kV





© 2023 Microsoft Corporation © 2023 Maxar © CNES (2023) Distribution Airbus DS

	FLAT CUT		Removal / Take Down		200ft Gravel Well		Green Mt Power ROW
	FLR + FLAT CUT hwd/swd 12ft +		Special Concern		Ground Water Protection Area		Structure
	FOLIAR SPRAY		Well Location		Town Line		Transmission Line
	Required Contac - Customer		Public Well		Tax Parcel		Threatened and Endangered Species - BMPs
	Priority Location		200ft Well Buffer		State Forest		No Herbicide Requested



MARSHFIELD to COMERFORD
 Line# 3316 34.5 kV

Page 41 of 49

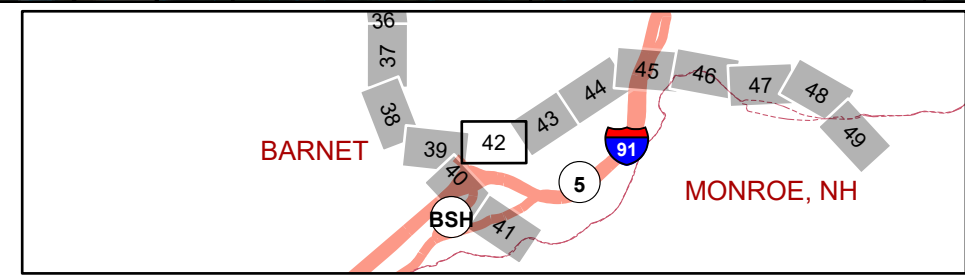
0 85 170 340 510
 Feet



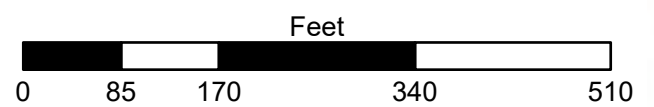


© 2023 Microsoft Corporation © 2023 Maxar © CNES (2023) Distribution Airbus DS

FLAT CUT	Removal / Take Down	200ft Gravel Well	Green Mt Power ROW
FLR + FLAT CUT hwd/swd 12ft +	Special Concern	Ground Water Protection Area	Structure
FOLIAR SPRAY	Well Location	Town Line	Transmission Line
Required Contact - Customer	Public Well	Tax Parcel	Threatened and Endangered Species - BMPs
Priority Location	200ft Well Buffer	State Forest	No Herbicide Requested



MARSHFIELD to COMERFORD
Line# 3316 34.5 kV

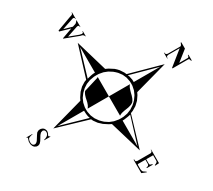
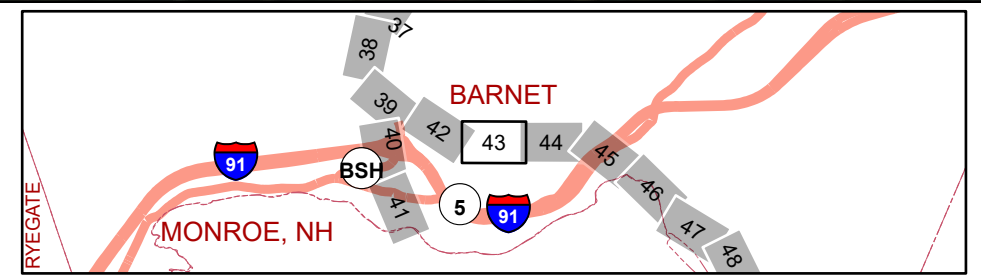




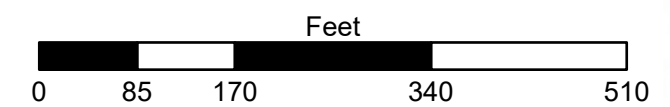
bing

© 2023 Microsoft Corporation © 2023 Maxar © CNES (2023) Distribution Airbus DS

	FLAT CUT		Removal / Take Down		200ft Gravel Well		Green Mt Power ROW
	FLR + FLAT CUT hwd/swd 12ft +		Special Concern		Ground Water Protection Area		Structure
	FOLIAR SPRAY		Well Location		Town Line		Transmission Line
	Required Contac - Customer		Public Well		Tax Parcel		Threatened and Endangered Species - BMPs
	Priority Location		200ft Well Buffer		State Forest		No Herbicide Requested



MARSHFIELD to COMERFORD
Line# 3316 34.5 kV

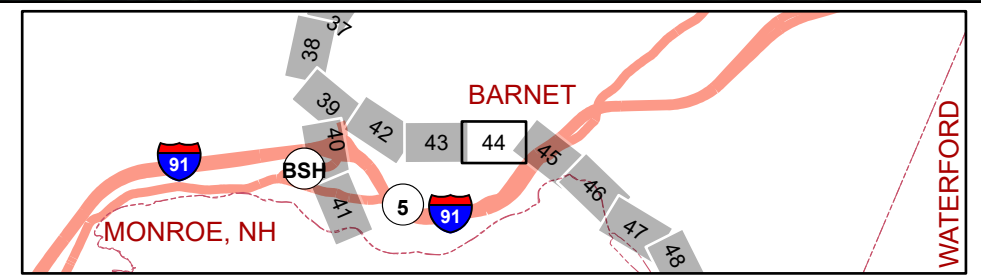




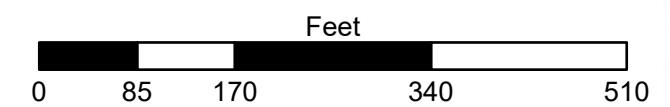
bing

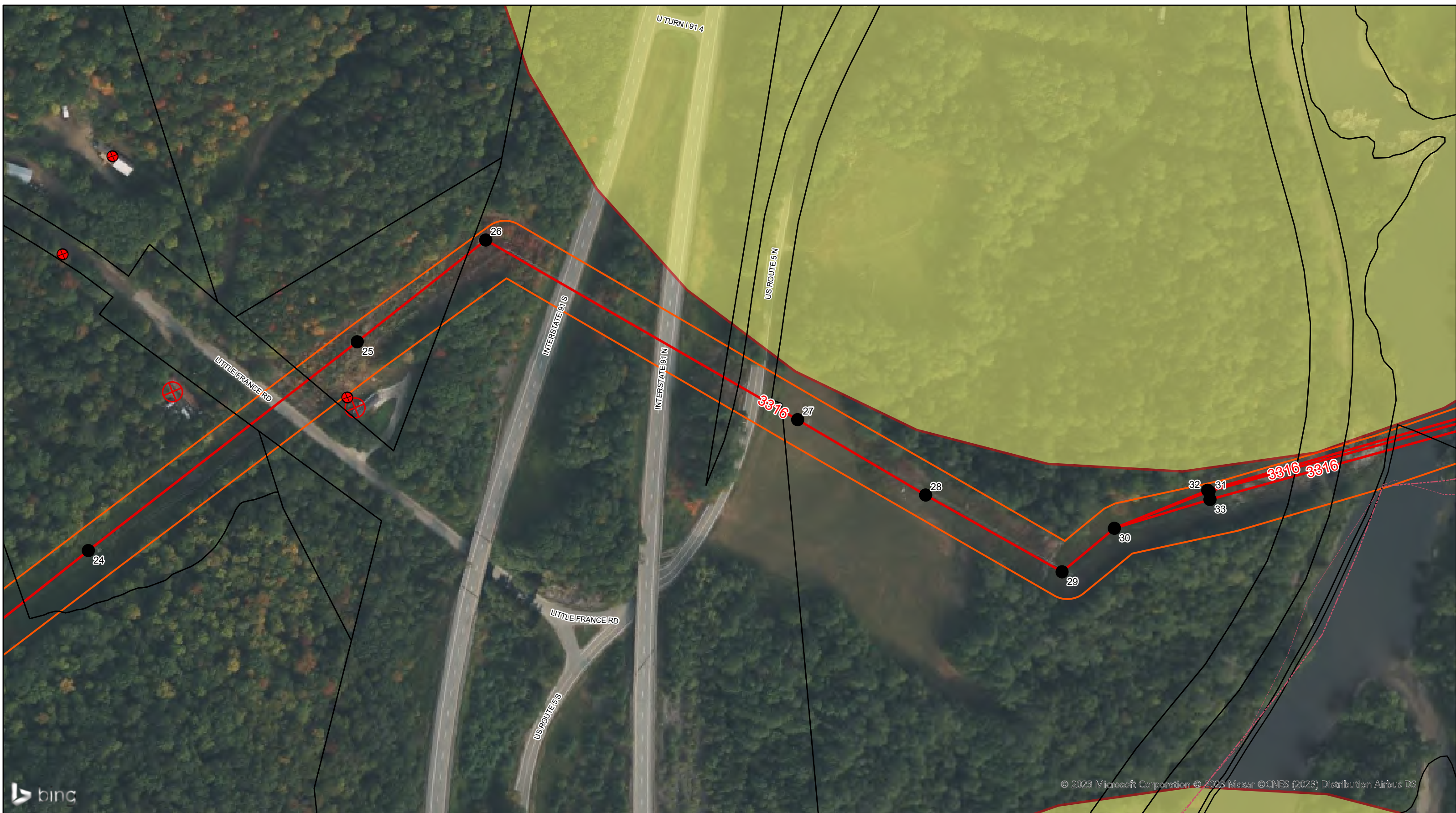
© 2023 Microsoft Corporation © 2023 Maxar © CNES (2023) Distribution Airbus DS

	FLAT CUT		Removal / Take Down		200ft Gravel Well		Green Mt Power ROW
	FLR + FLAT CUT hwd/swd 12ft +		Special Concern		Ground Water Protection Area		Structure
	FOLIAR SPRAY		Well Location		Town Line		Transmission Line
	Required Contac - Customer		Public Well		Tax Parcel		Threatened and Endangered Species - BMPs
	Priority Location		200ft Well Buffer		State Forest		No Herbicide Requested

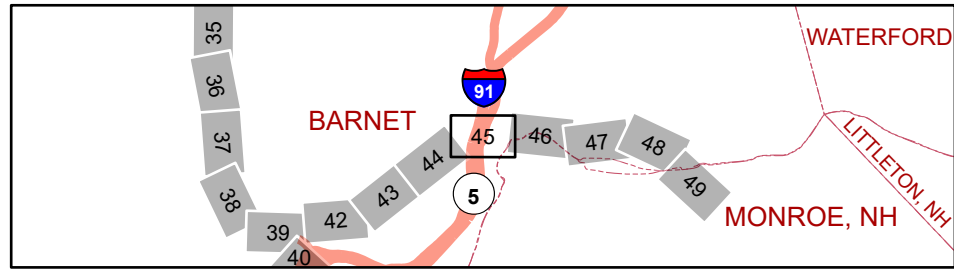


MARSHFIELD to COMERFORD
Line# 3316 34.5 kV

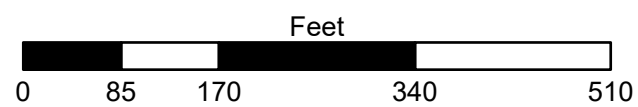




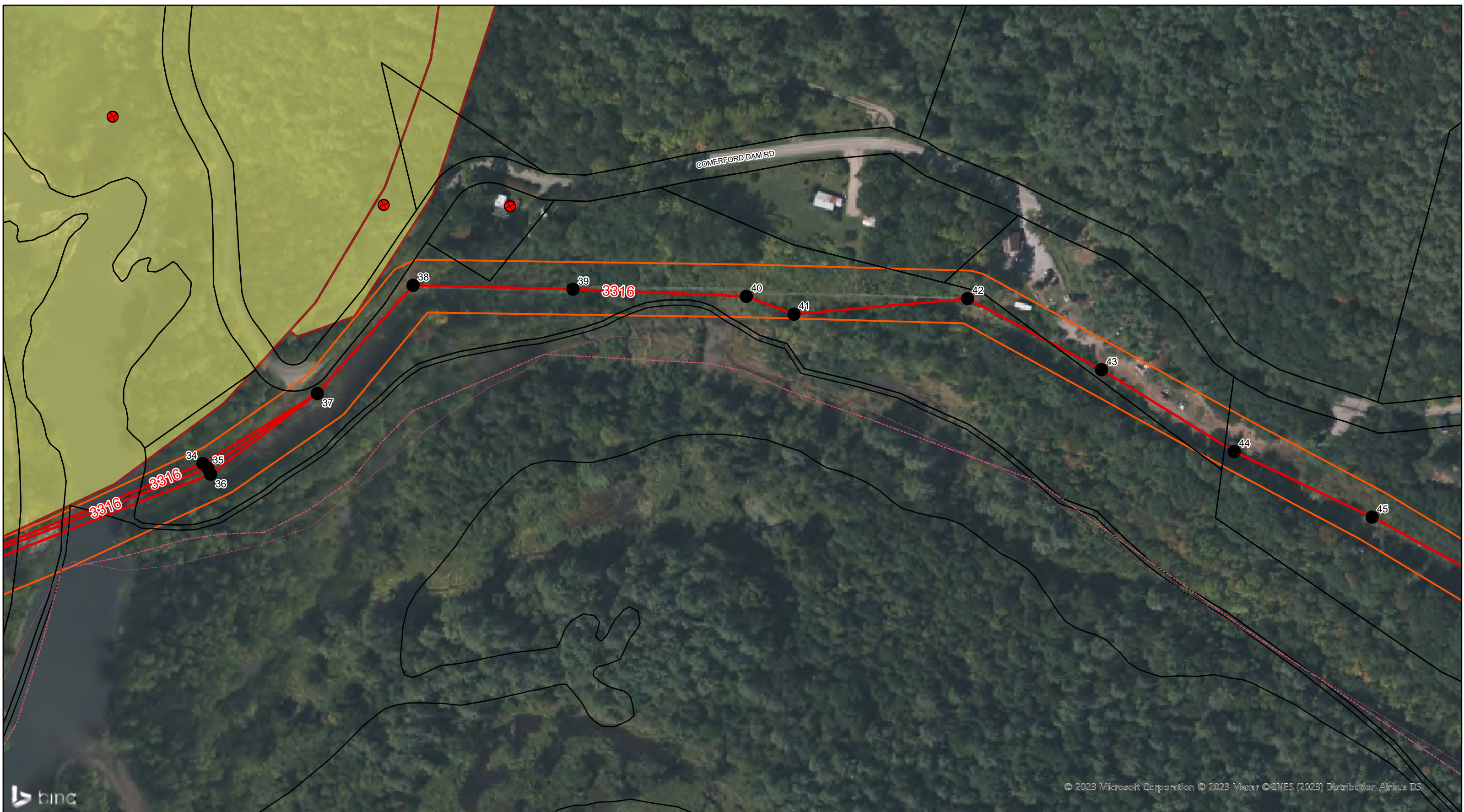
FLAT CUT	Removal / Take Down	200ft Gravel Well	Green Mt Power ROW
FLR + FLAT CUT hwd/swd 12ft +	Special Concern	Ground Water Protection Area	Structure
FOLIAR SPRAY	Well Location	Town Line	Transmission Line
Required Contact - Customer	Public Well	Tax Parcel	Threatened and Endangered Species - BMPs
Priority Location	200ft Well Buffer	State Forest	No Herbicide Requested



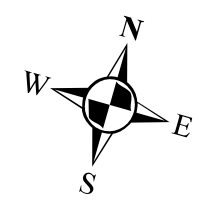
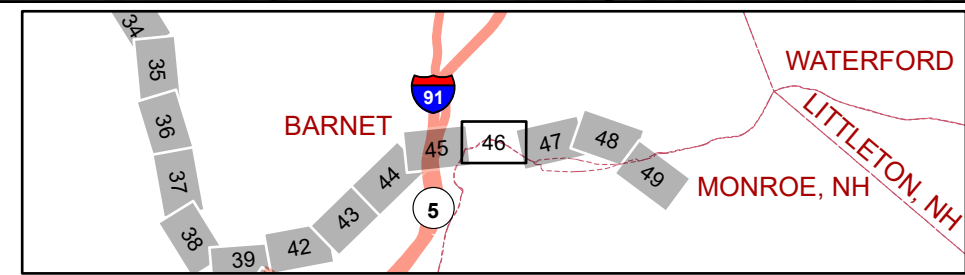
MARSHFIELD to COMERFORD
Line# 3316 34.5 kV



© 2023 Microsoft Corporation © 2023 Maxar © CNES (2023) Distribution Airbus DS

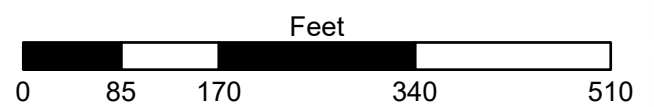


FLAT CUT	Removal / Take Down	200ft Gravel Well	Green Mt Power ROW
FLR + FLAT CUT hwd/swd 12ft +	Special Concern	Ground Water Protection Area	Structure
FOLIAR SPRAY	Well Location	Town Line	Transmission Line
Required Contact - Customer	Public Well	Tax Parcel	Threatened and Endangered Species - BMPs
Priority Location	200ft Well Buffer	State Forest	No Herbicide Requested



MARSHFIELD to COMERFORD

Line# 3316 34.5 kV

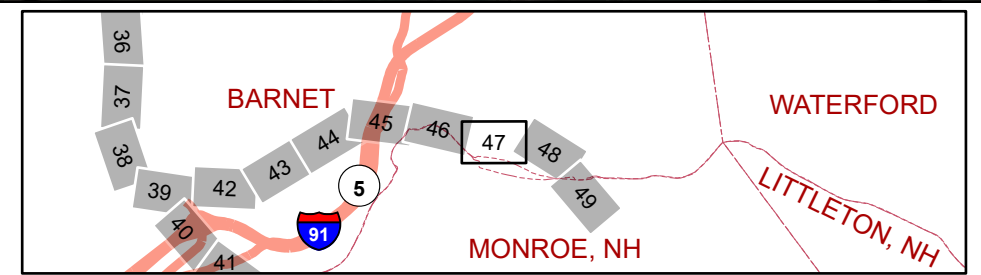




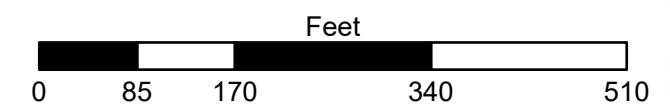
bing

© 2023 Microsoft Corporation © 2023 Maxar © CNES (2023) Distribution Airbus DS

	FLAT CUT		Removal / Take Down		200ft Gravel Well		Green Mt Power ROW
	FLR + FLAT CUT hwd/swd 12ft +		Special Concern		Ground Water Protection Area		Structure
	FOLIAR SPRAY		Well Location		Town Line		Transmission Line
	Required Contac - Customer		Public Well		Tax Parcel		Threatened and Endangered Species - BMPs
	Priority Location		200ft Well Buffer		State Forest		No Herbicide Requested



MARSHFIELD to COMERFORD
Line# 3316 34.5 kV

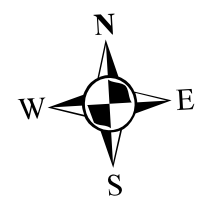
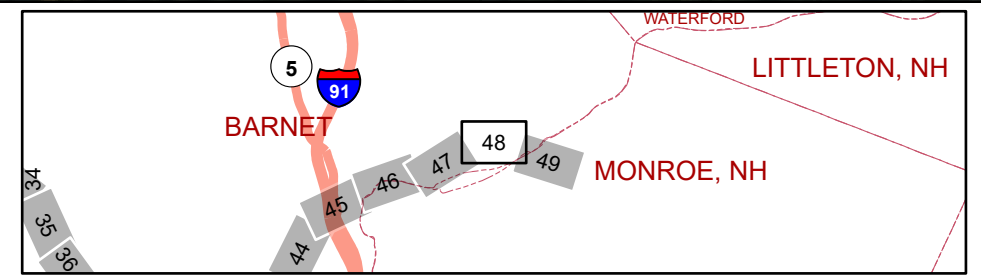




bing

© 2023 Microsoft Corporation © 2023 Maxar © CNES (2023) Distribution Airbus DS

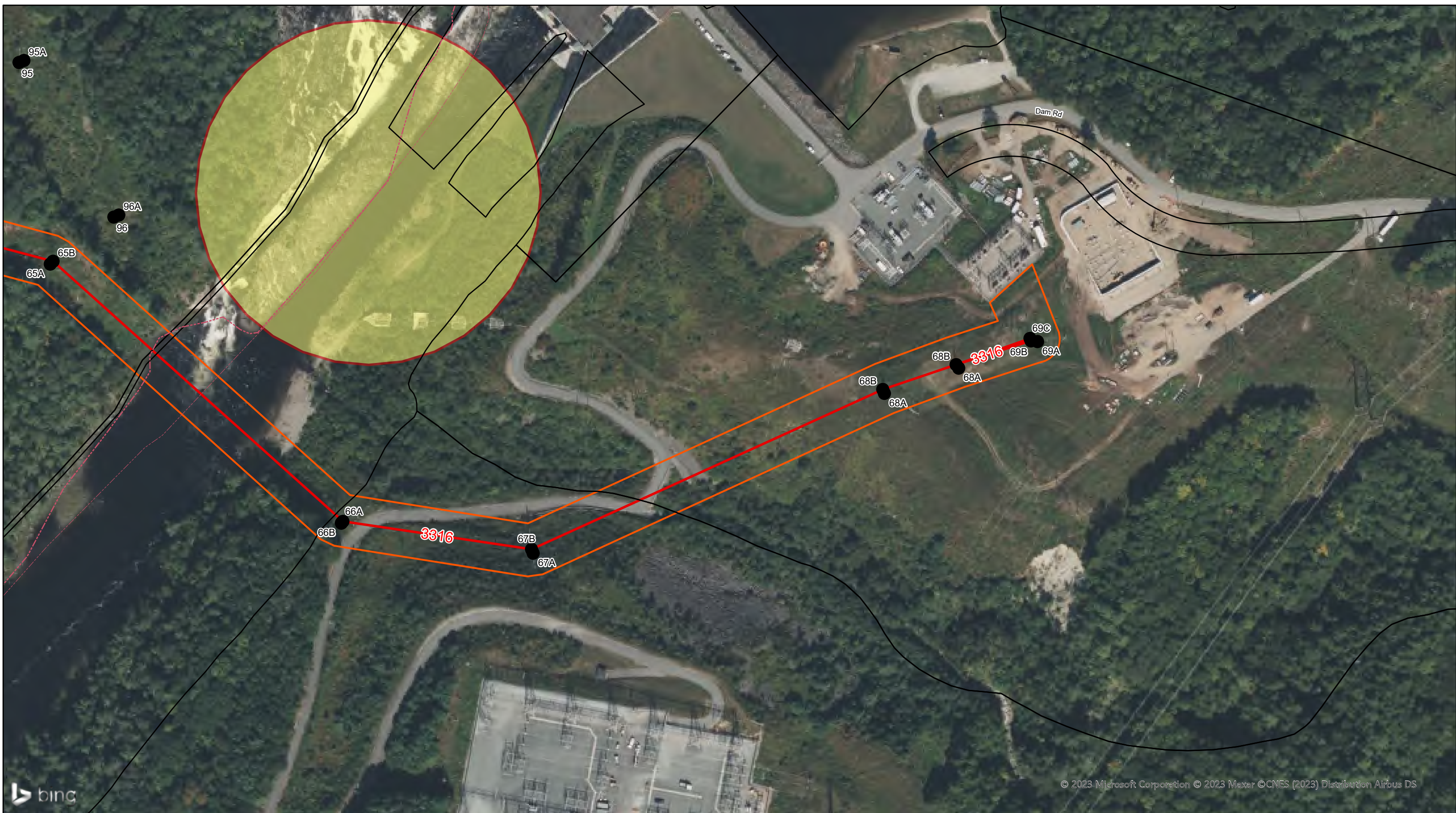
	FLAT CUT		Removal / Take Down		200ft Gravel Well		Green Mt Power ROW
	FLR + FLAT CUT hwd/swd 12ft +		Special Concern		Ground Water Protection Area		Structure
	FOLIAR SPRAY		Well Location		Town Line		Transmission Line
	Required Contac - Customer		Public Well		Tax Parcel		Threatened and Endangered Species - BMPs
	Priority Location		200ft Well Buffer		State Forest		No Herbicide Requested



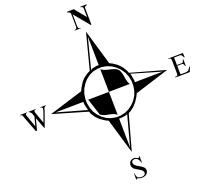
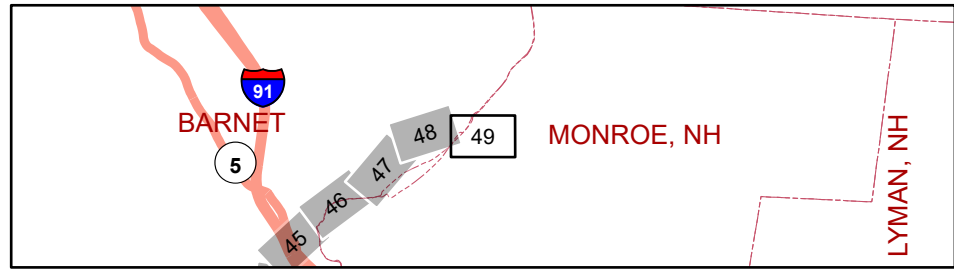
MARSHFIELD to COMERFORD
 Line# 3316 34.5 kV

Feet





FLAT CUT	Removal / Take Down	200ft Gravel Well	Green Mt Power ROW
FLR + FLAT CUT hwd/swd 12ft +	Special Concern	Ground Water Protection Area	Structure
FOLIAR SPRAY	Well Location	Town Line	Transmission Line
Required Contac - Customer	Public Well	Tax Parcel	Threatened and Endangered Species - BMPs
Priority Location	200ft Well Buffer	State Forest	No Herbicide Requested



MARSHFIELD to COMERFORD
Line# 3316 34.5 kV

