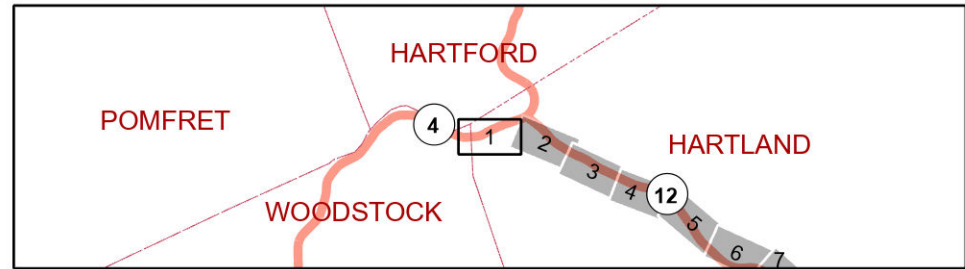
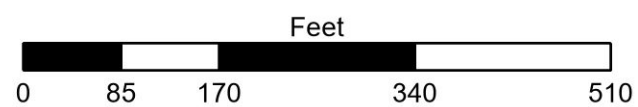


© 2023 Microsoft Corporation © 2023 Maxar © CNES (2023) Distribution Airbus DS

| | | | |
|-------------------------------|---------------------|------------------------------|--|
| FLAT CUT | Removal / Take Down | 200ft Gravel Well | Green Mt Power ROW |
| FLR + FLAT CUT hwd/swd 12ft + | Special Concern | Ground Water Protection Area | Structure |
| FOLIAR SPRAY | Well Location | Town Line | Transmission Line |
| Required Contac - Customer | Public Well | Tax Parcel | Threatened and Endangered Species - BMPs |
| Priority Location | 200ft Well Buffer | State Forest | No Herbicide Requested |



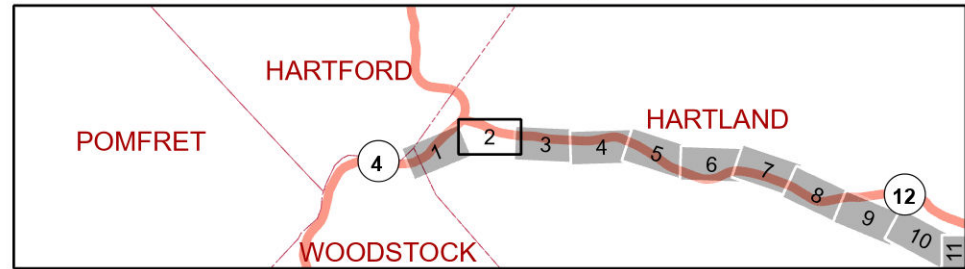
WINDSOR to TAFTSVILLE
Line# 105 46 kV



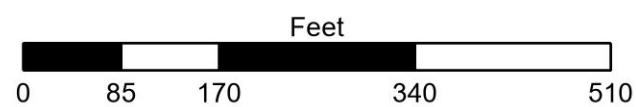


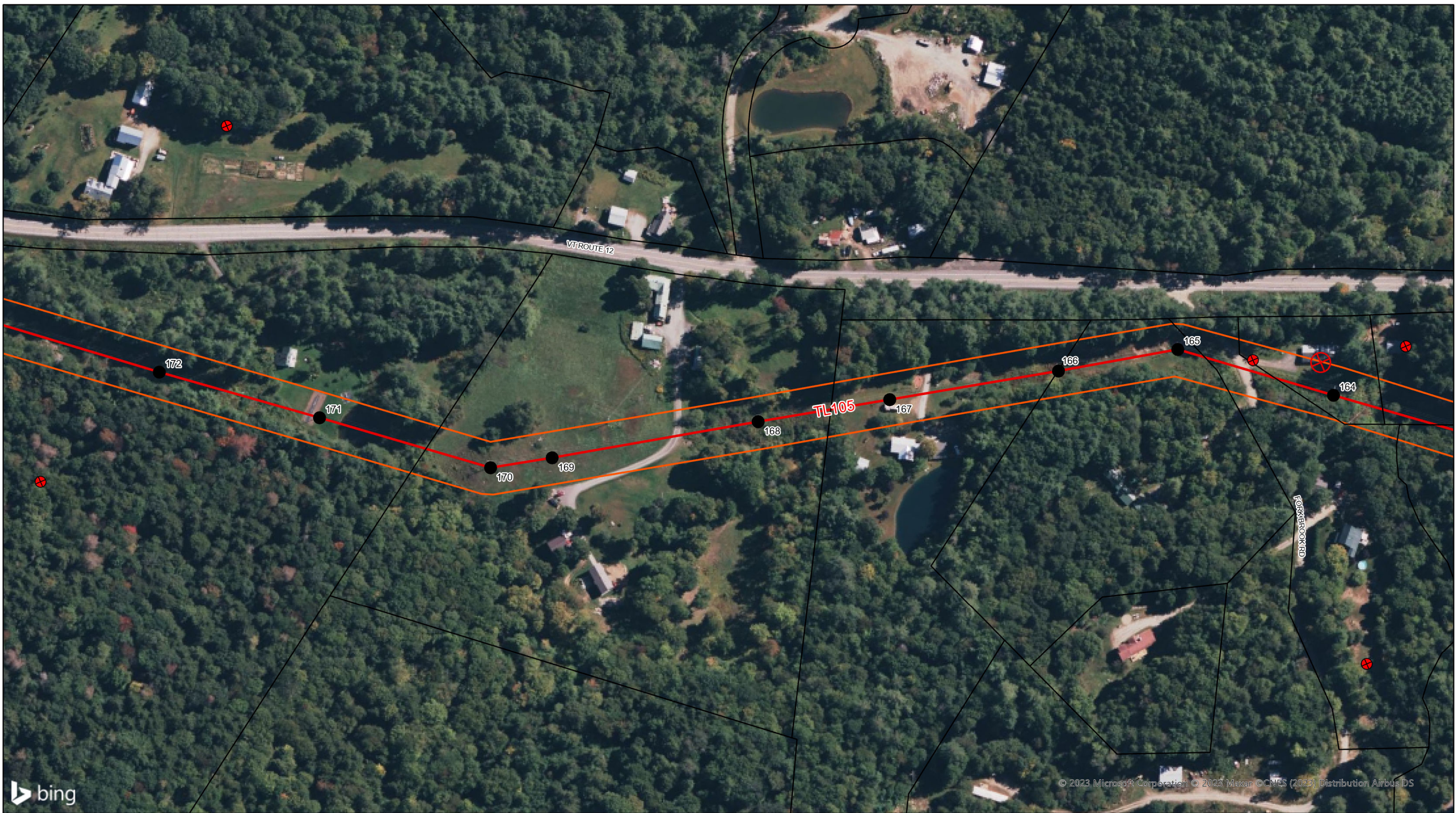
© 2023 Microsoft Corporation © 2023 Maxar © CNES (2023) Distribution Airbus DS

| | | | |
|-------------------------------|---------------------|------------------------------|--|
| FLAT CUT | Removal / Take Down | 200ft Gravel Well | Green Mt Power ROW |
| FLR + FLAT CUT hwd/swd 12ft + | Special Concern | Ground Water Protection Area | Structure |
| FOLIAR SPRAY | Well Location | Town Line | Transmission Line |
| Required Contac - Customer | Public Well | Tax Parcel | Threatened and Endangered Species - BMPs |
| Priority Location | 200ft Well Buffer | State Forest | No Herbicide Requested |



WINDSOR to TAFTSVILLE
Line# 105 46 kV

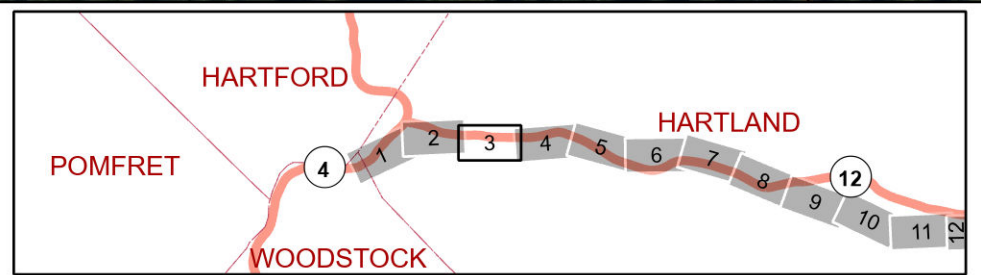




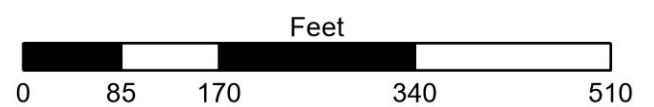
bing

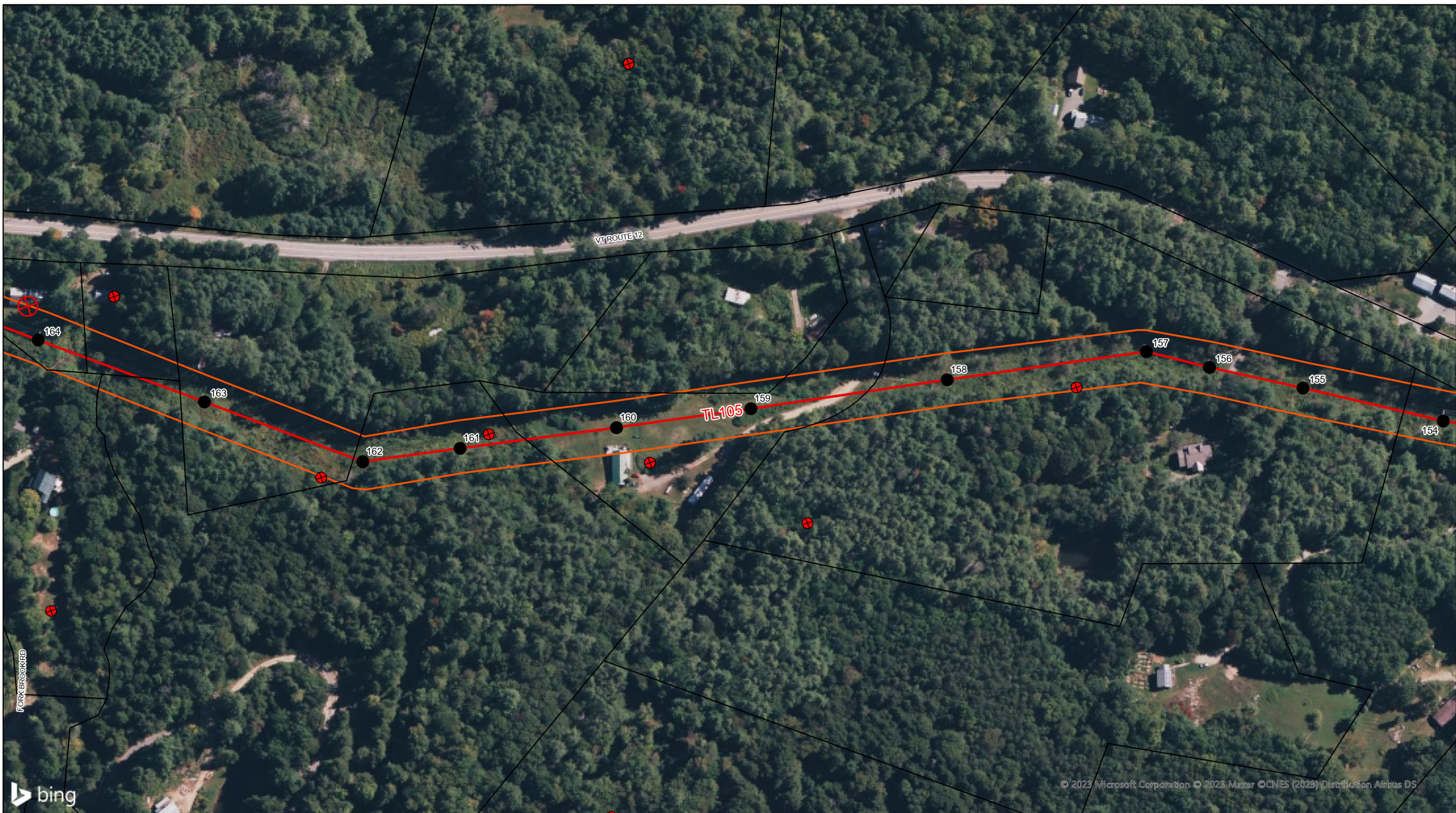
© 2023 Microsoft Corporation © 2023 Maxar © CNES (2023) Distribution Airbus DS

| | | | |
|-------------------------------|---------------------|------------------------------|--|
| FLAT CUT | Removal / Take Down | 200ft Gravel Well | Green Mt Power ROW |
| FLR + FLAT CUT hwd/swd 12ft + | Special Concern | Ground Water Protection Area | Structure |
| FOLIAR SPRAY | Well Location | Town Line | Transmission Line |
| Required Contact - Customer | Public Well | Tax Parcel | Threatened and Endangered Species - BMPs |
| Priority Location | 200ft Well Buffer | State Forest | No Herbicide Requested |

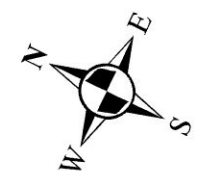
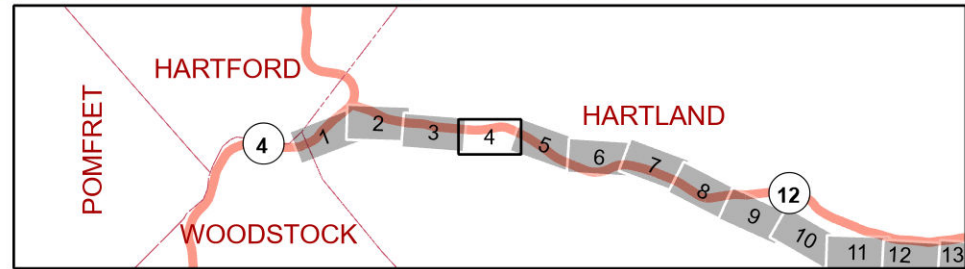


WINDSOR to TAFTSVILLE
Line# 105 46 kV

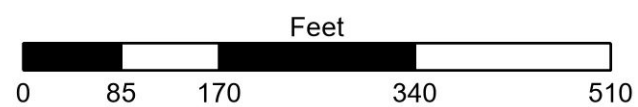




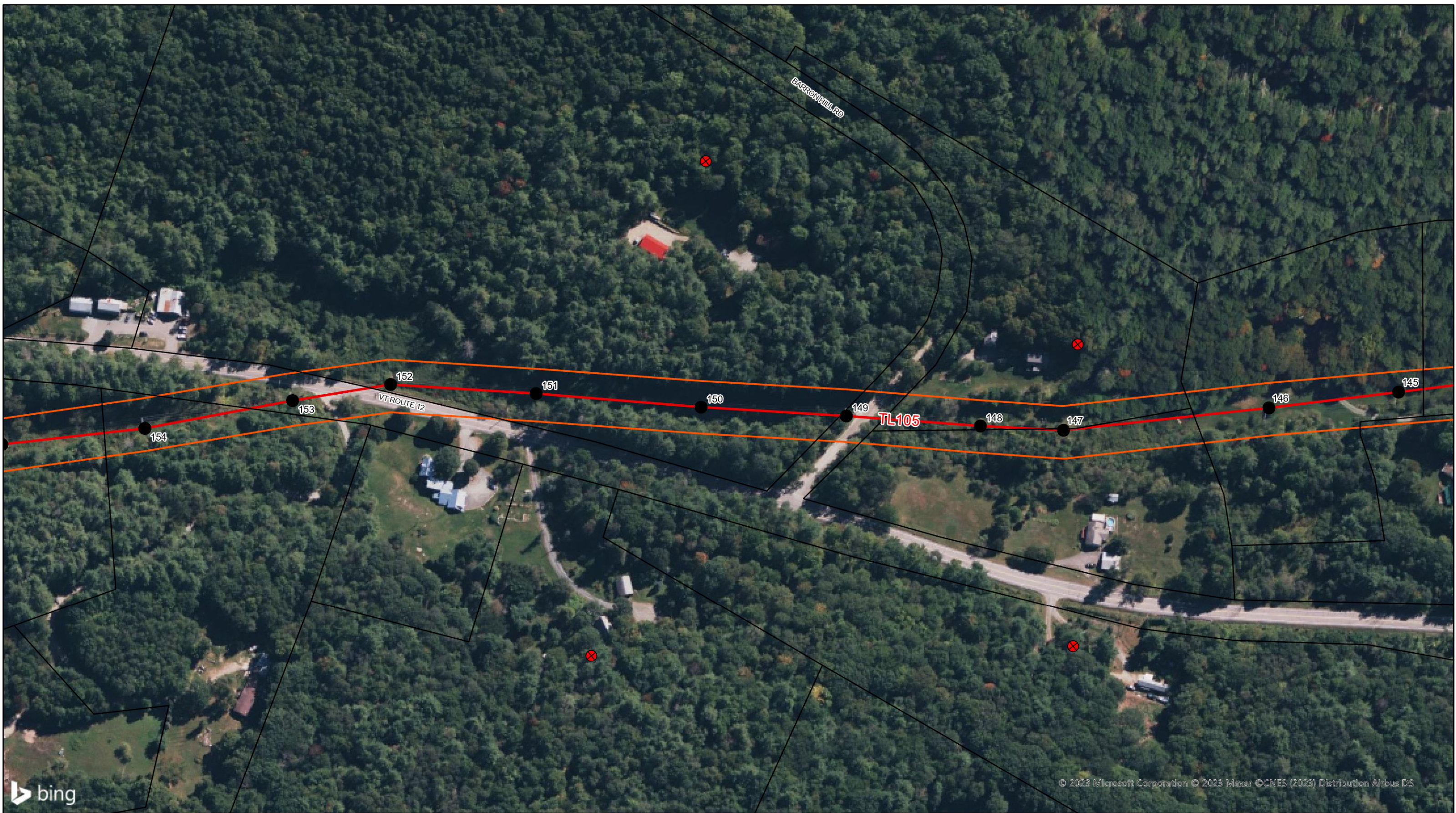
| | | | | | | | |
|--|-------------------------------|--|---------------------|--|------------------------------|--|--|
| | FLAT CUT | | Removal / Take Down | | 200ft Gravel Well | | Green Mt Power ROW |
| | FLR + FLAT CUT hwd/swd 12ft + | | Special Concern | | Ground Water Protection Area | | Structure |
| | FOLIAR SPRAY | | Well Location | | Town Line | | Transmission Line |
| | Required Contac - Customer | | Public Well | | Tax Parcel | | Threatened and Endangered Species - BMPs |
| | Priority Location | | 200ft Well Buffer | | State Forest | | No Herbicide Requested |



WINDSOR to TAFTSVILLE
Line# 105 46 kV



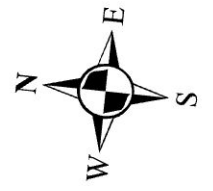
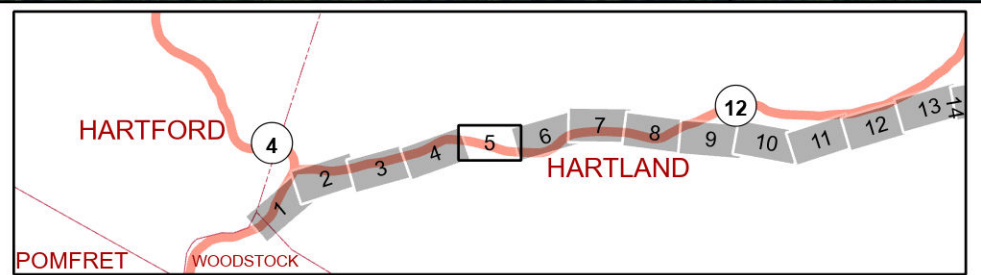
© 2023 Microsoft Corporation © 2023 Maxar ©CNES (2023) Distribution Airbus DS



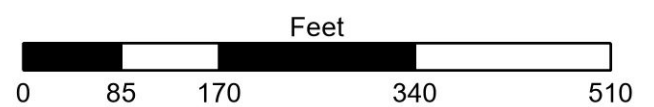
bing

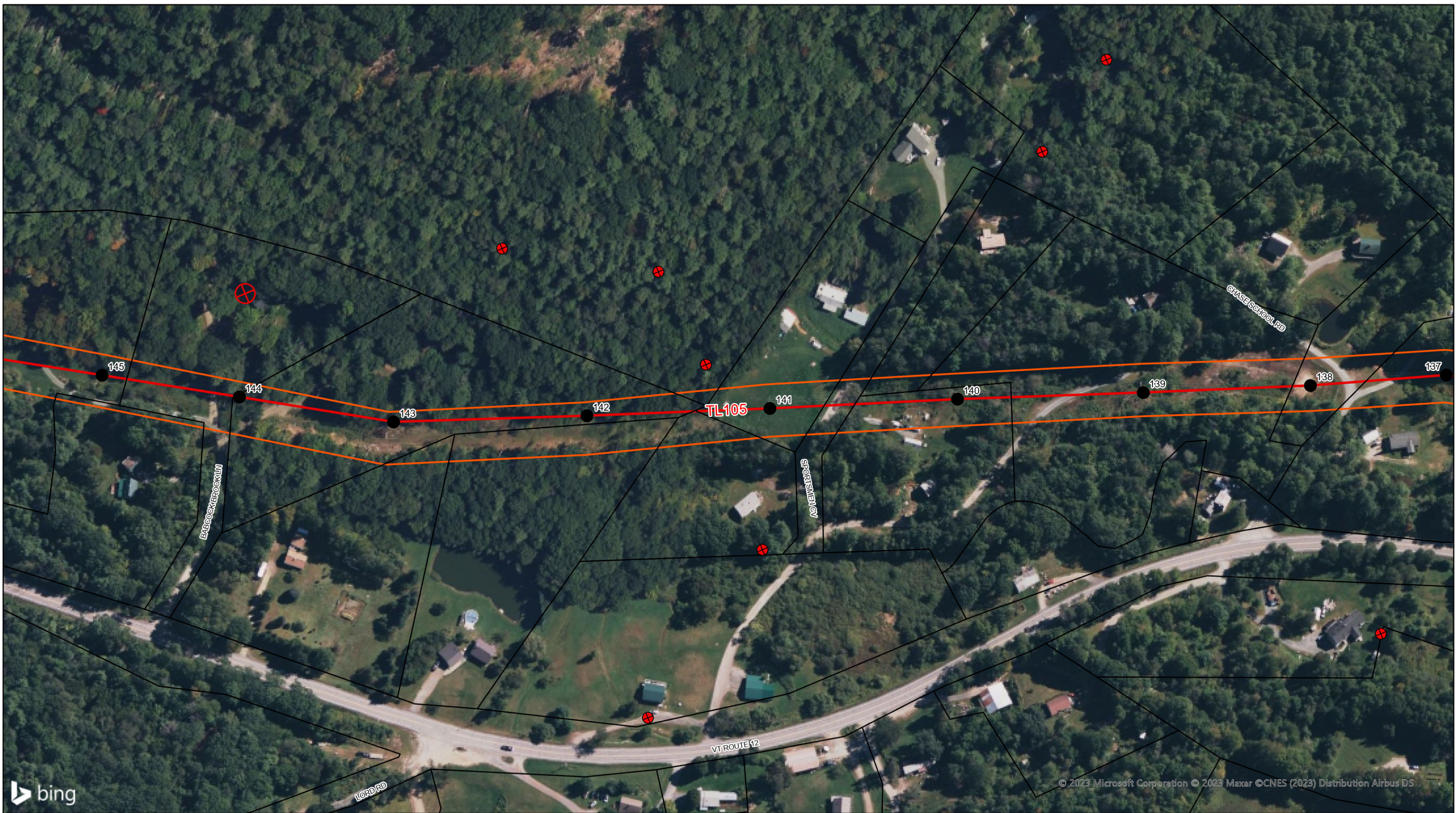
© 2023 Microsoft Corporation © 2023 Maxar © CNES (2023) Distribution Airbus DS

| | | | | | | | |
|--|-------------------------------|--|---------------------|--|------------------------------|--|--|
| | FLAT CUT | | Removal / Take Down | | 200ft Gravel Well | | Green Mt Power ROW |
| | FLR + FLAT CUT hwd/swd 12ft + | | Special Concern | | Ground Water Protection Area | | Structure |
| | FOLIAR SPRAY | | Well Location | | Town Line | | Transmission Line |
| | Required Contac - Customer | | Public Well | | Tax Parcel | | Threatened and Endangered Species - BMPs |
| | Priority Location | | 200ft Well Buffer | | State Forest | | No Herbicide Requested |



WINDSOR to TAFTSVILLE
Line# 105 46 kV

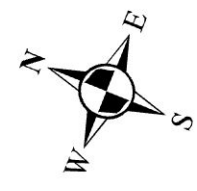
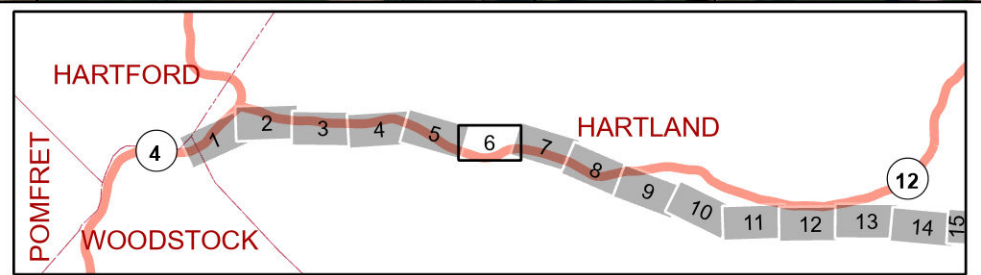




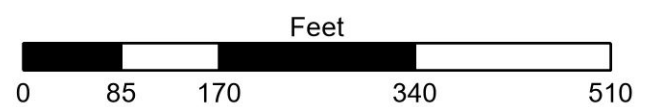
bing

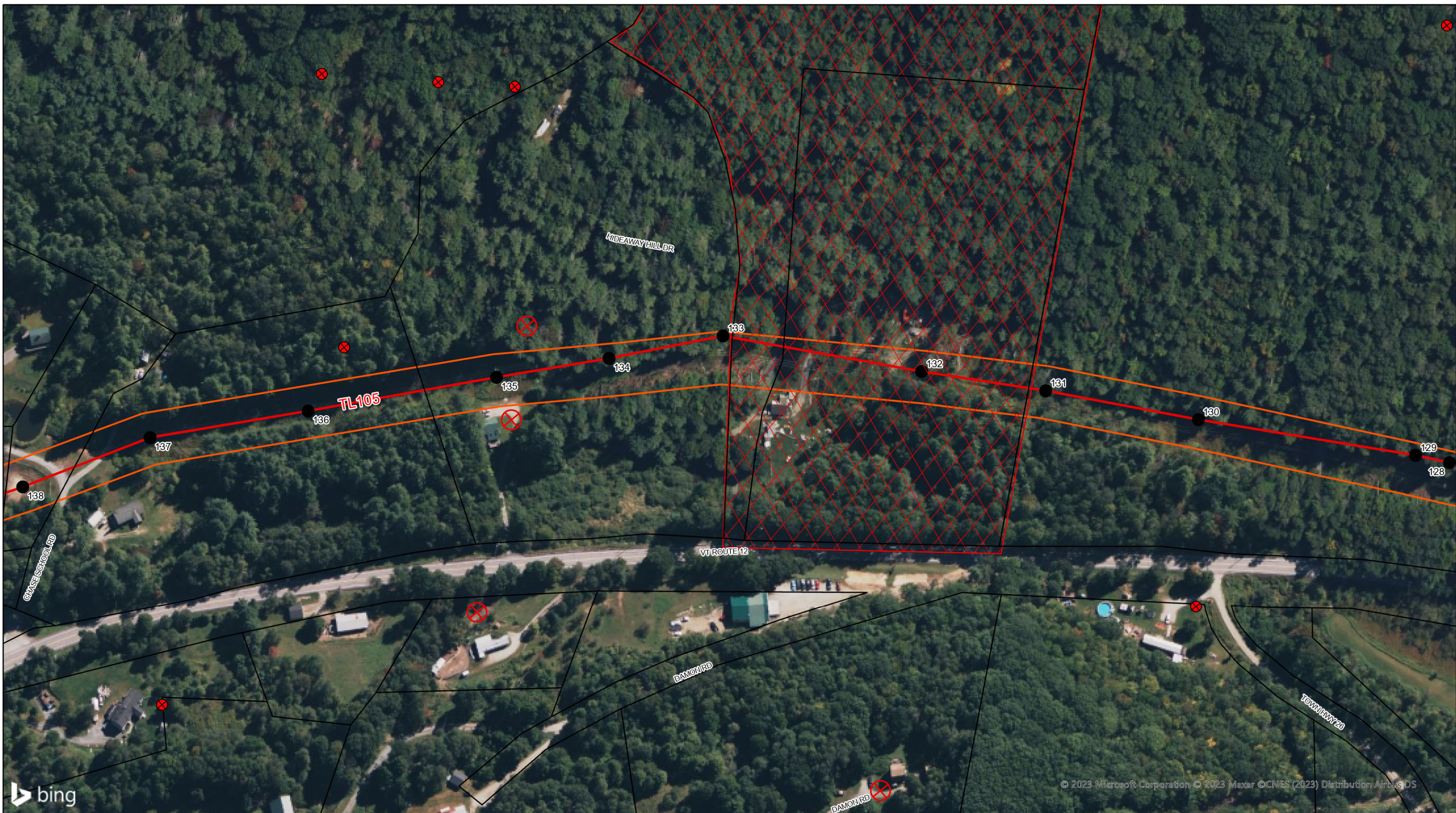
© 2023 Microsoft Corporation © 2023 Maxar © CNES (2023) Distribution Airbus DS

| | | | | | | | |
|--|-------------------------------|--|---------------------|--|------------------------------|--|--|
| | FLAT CUT | | Removal / Take Down | | 200ft Gravel Well | | Green Mt Power ROW |
| | FLR + FLAT CUT hwd/swd 12ft + | | Special Concern | | Ground Water Protection Area | | Structure |
| | FOLIAR SPRAY | | Well Location | | Town Line | | Transmission Line |
| | Required Contact - Customer | | Public Well | | Tax Parcel | | Threatened and Endangered Species - BMPs |
| | Priority Location | | 200ft Well Buffer | | State Forest | | No Herbicide Requested |

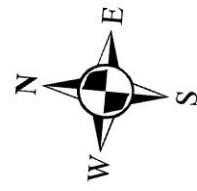
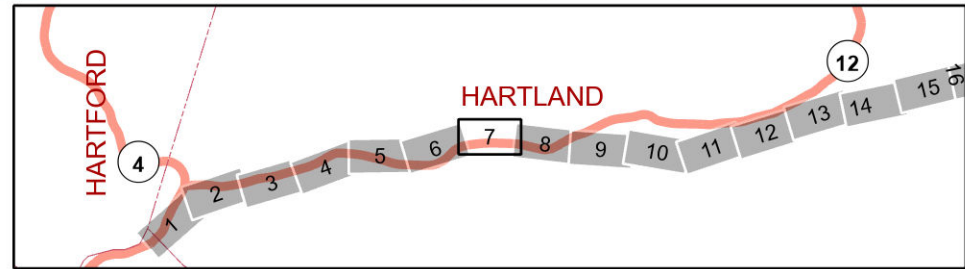


WINDSOR to TAFTSVILLE
Line# 105 46 kV

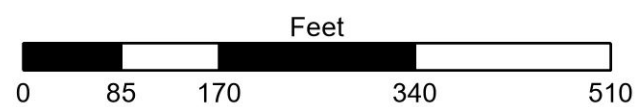


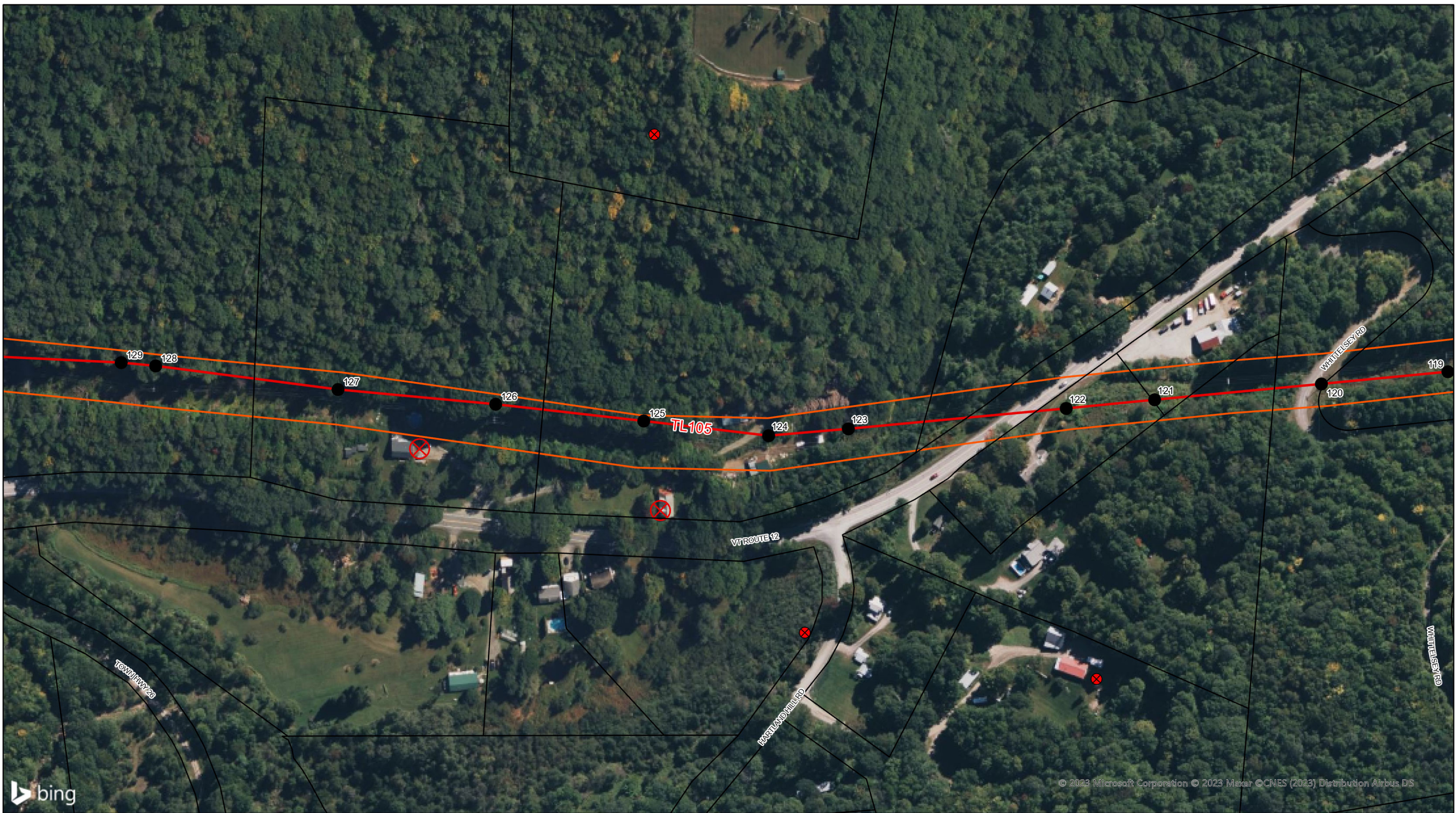


| | | | |
|-------------------------------|---------------------|------------------------------|--|
| FLAT CUT | Removal / Take Down | 200ft Gravel Well | Green Mt Power ROW |
| FLR + FLAT CUT hwd/swd 12ft + | Special Concern | Ground Water Protection Area | Structure |
| FOLIAR SPRAY | Well Location | Town Line | Transmission Line |
| Required Contact - Customer | Public Well | Tax Parcel | Threatened and Endangered Species - BMPs |
| Priority Location | 200ft Well Buffer | State Forest | No Herbicide Requested |

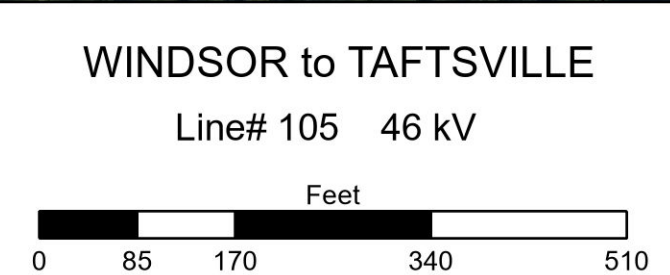
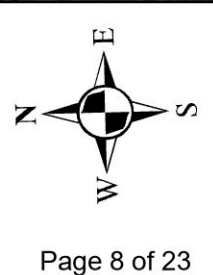
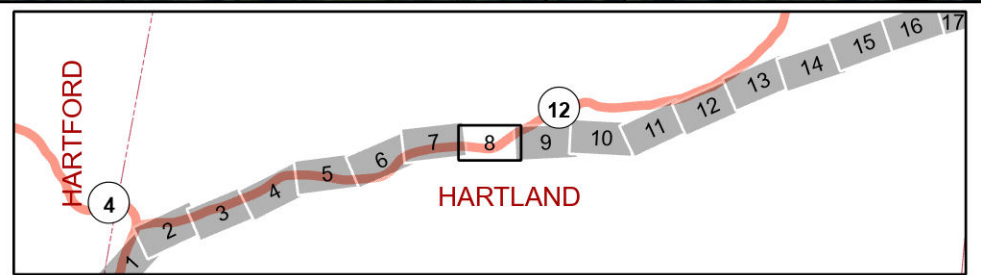


WINDSOR to TAFTSVILLE
Line# 105 46 kV



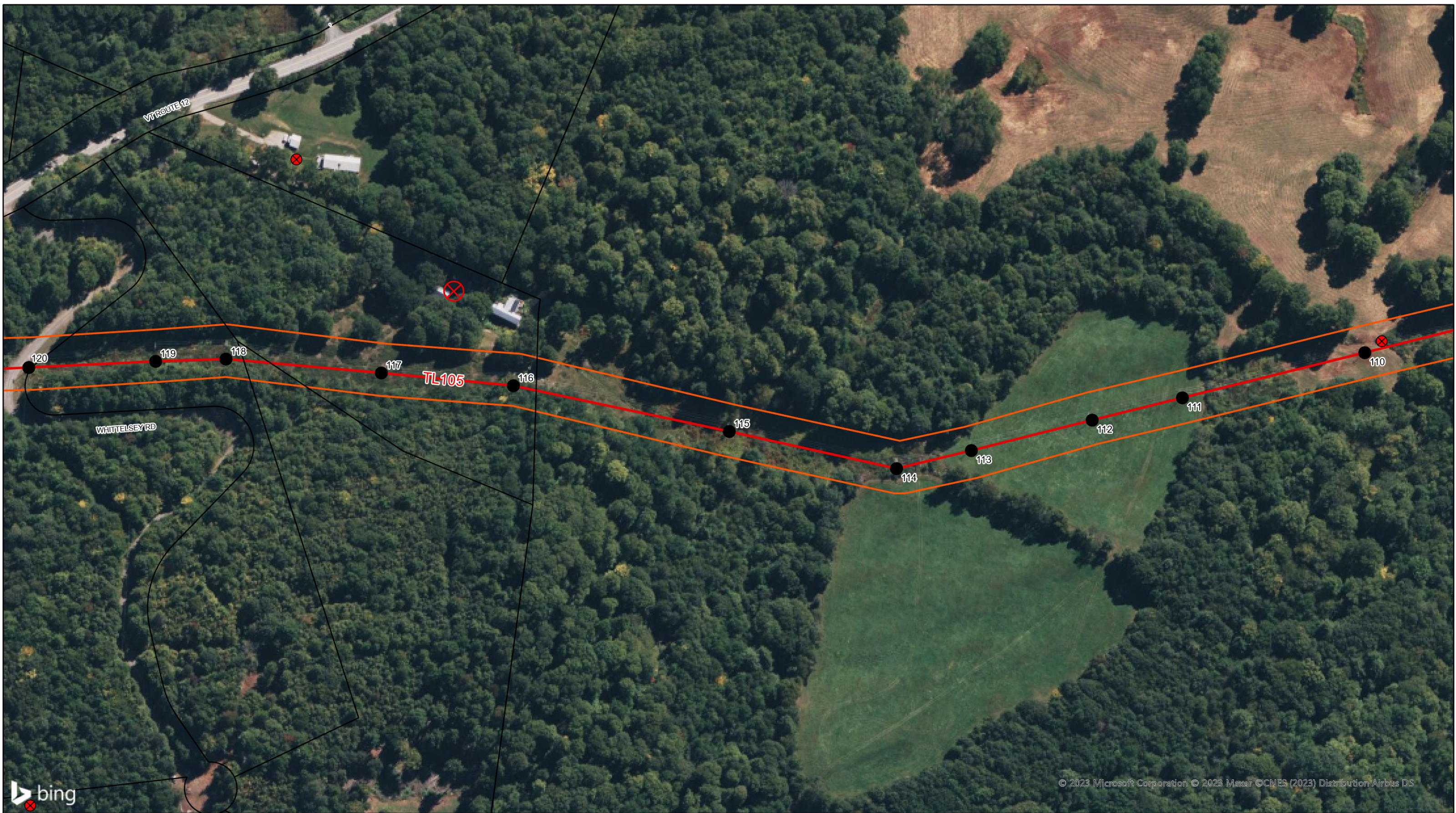


| | | | |
|-------------------------------|---------------------|------------------------------|--|
| FLAT CUT | Removal / Take Down | 200ft Gravel Well | Green Mt Power ROW |
| FLR + FLAT CUT hwd/swd 12ft + | Special Concern | Ground Water Protection Area | Structure |
| FOLIAR SPRAY | Well Location | Town Line | Transmission Line |
| Required Contac - Customer | Public Well | Tax Parcel | Threatened and Endangered Species - BMPs |
| Priority Location | 200ft Well Buffer | State Forest | No Herbicide Requested |



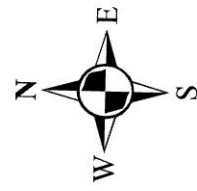
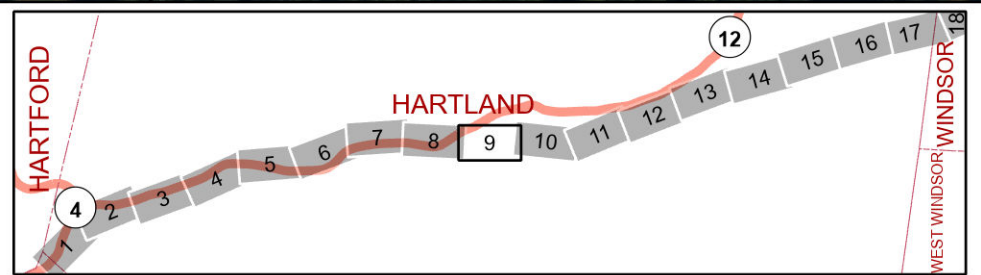
bing

© 2023 Microsoft Corporation © 2023 Maxar © CNES (2023) Distribution Airbus DS

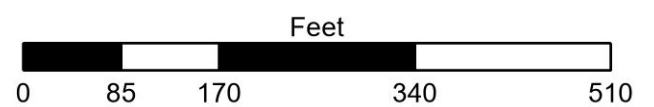


© 2023 Microsoft Corporation © 2023 Maxar © CNES (2023) Distribution Airbus DS

| | | | | | | | |
|--|-------------------------------|--|---------------------|--|------------------------------|--|--|
| | FLAT CUT | | Removal / Take Down | | 200ft Gravel Well | | Green Mt Power ROW |
| | FLR + FLAT CUT hwd/swd 12ft + | | Special Concern | | Ground Water Protection Area | | Structure |
| | FOLIAR SPRAY | | Well Location | | Town Line | | Transmission Line |
| | Required Contac - Customer | | Public Well | | Tax Parcel | | Threatened and Endangered Species - BMPs |
| | Priority Location | | 200ft Well Buffer | | State Forest | | No Herbicide Requested |

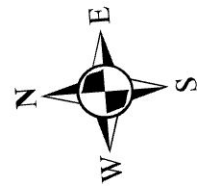
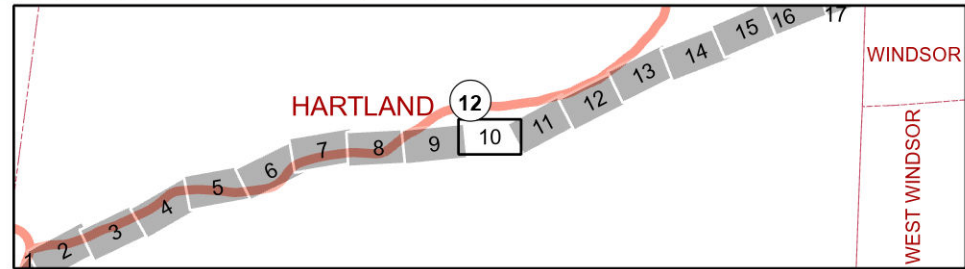


WINDSOR to TAFTSVILLE
Line# 105 46 kV

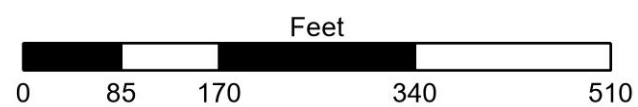




| | | | |
|-------------------------------|---------------------|------------------------------|--|
| FLAT CUT | Removal / Take Down | 200ft Gravel Well | Green Mt Power ROW |
| FLR + FLAT CUT hwd/swd 12ft + | Special Concern | Ground Water Protection Area | Structure |
| FOLIAR SPRAY | Well Location | Town Line | Transmission Line |
| Required Contact - Customer | Public Well | Tax Parcel | Threatened and Endangered Species - BMPs |
| Priority Location | 200ft Well Buffer | State Forest | No Herbicide Requested |



WINDSOR to TAFTSVILLE
Line# 105 46 kV

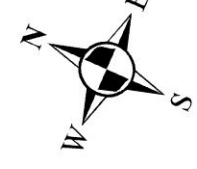
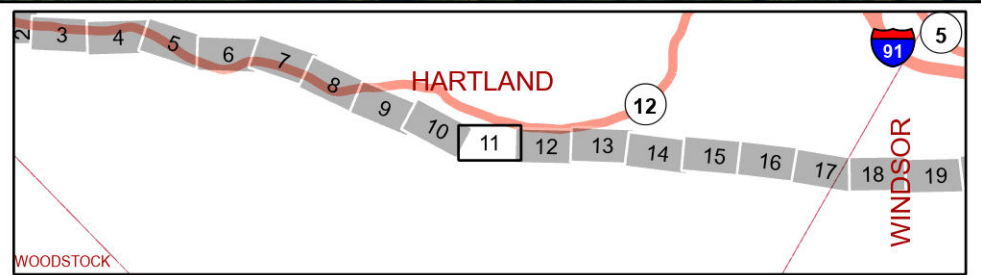




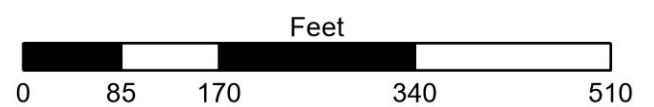
bing

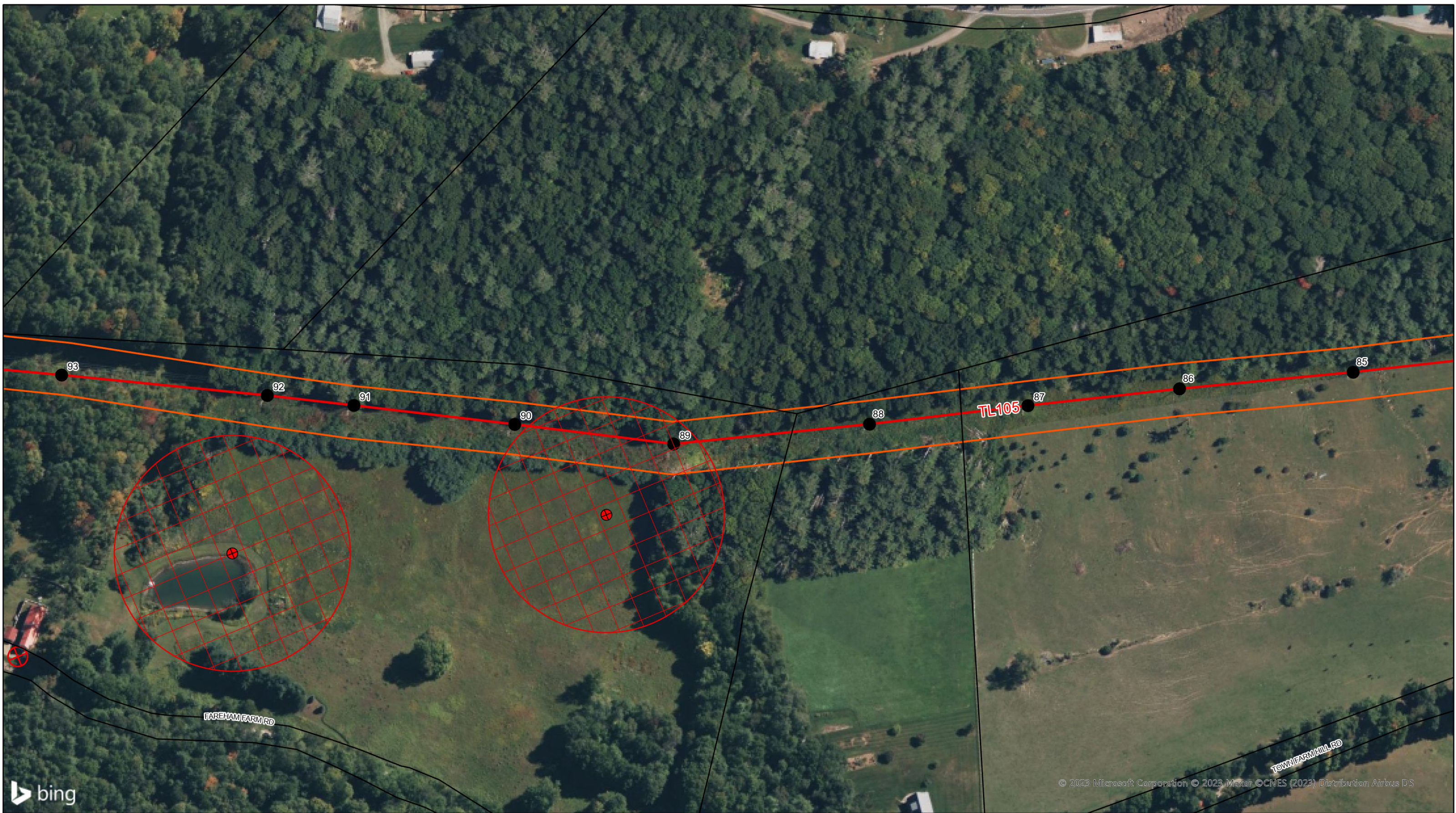
© 2023 Microsoft Corporation © 2023 Maxar © CNES (2023) Distribution Airbus DS

| | | | |
|-------------------------------|---------------------|------------------------------|--|
| FLAT CUT | Removal / Take Down | 200ft Gravel Well | Green Mt Power ROW |
| FLR + FLAT CUT hwd/swd 12ft + | Special Concern | Ground Water Protection Area | Structure |
| FOLIAR SPRAY | Well Location | Town Line | Transmission Line |
| Required Contact - Customer | Public Well | Tax Parcel | Threatened and Endangered Species - BMPs |
| Priority Location | 200ft Well Buffer | State Forest | No Herbicide Requested |

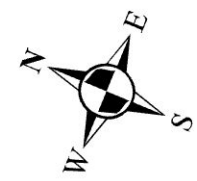
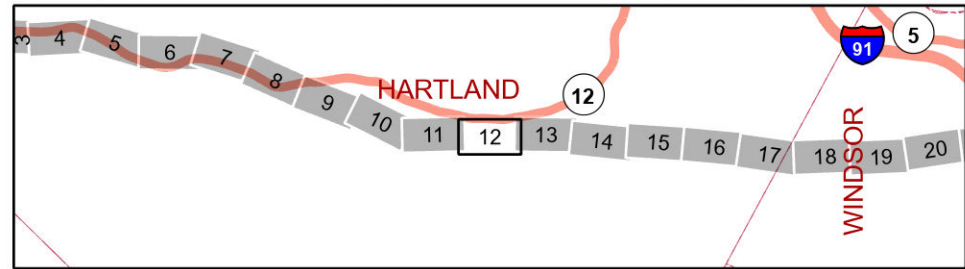


WINDSOR to TAFTSVILLE
Line# 105 46 kV

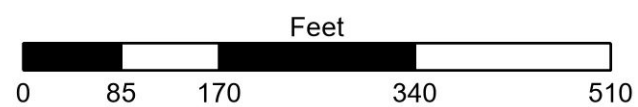




| | | | | | | | |
|--|-------------------------------|--|---------------------|--|------------------------------|--|--|
| | FLAT CUT | | Removal / Take Down | | 200ft Gravel Well | | Green Mt Power ROW |
| | FLR + FLAT CUT hwd/swd 12ft + | | Special Concern | | Ground Water Protection Area | | Structure |
| | FOLIAR SPRAY | | Well Location | | Town Line | | Transmission Line |
| | Required Contac - Customer | | Public Well | | Tax Parcel | | Threatened and Endangered Species - BMPs |
| | Priority Location | | 200ft Well Buffer | | State Forest | | No Herbicide Requested |



WINDSOR to TAFTSVILLE
Line# 105 46 kV

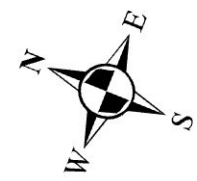
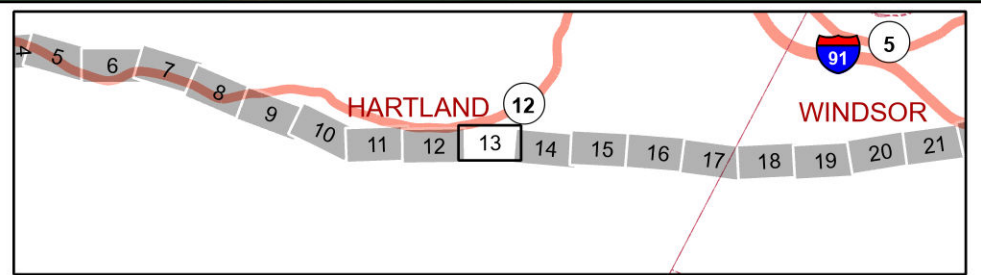




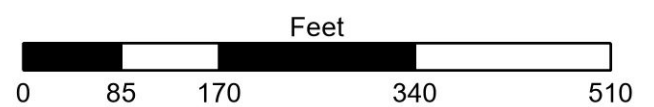
bing

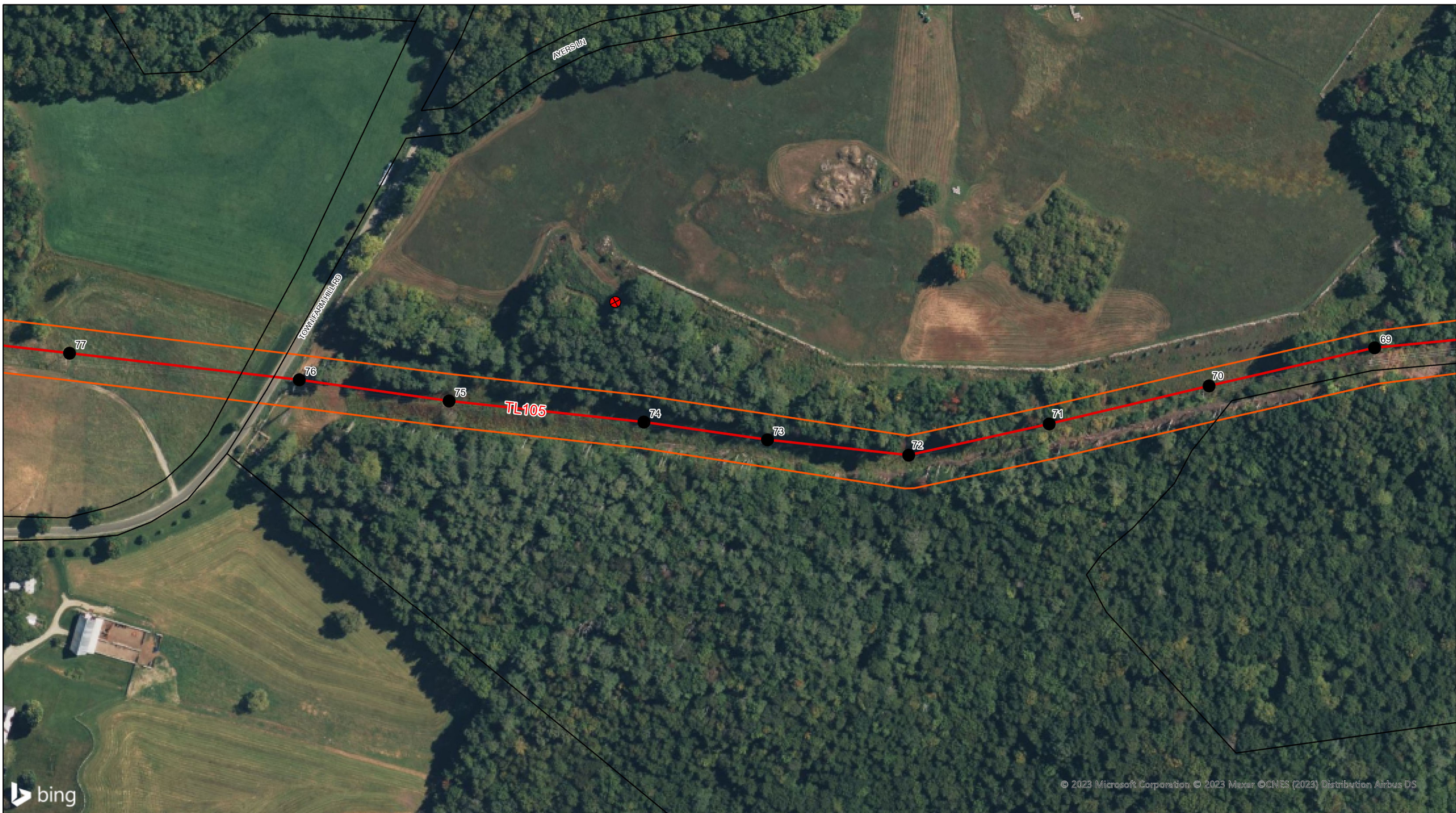
© 2023 Microsoft Corporation © 2023 Maxar © CNES (2023) Distribution Airbus DS

| | | | | | | | |
|--|-------------------------------|--|---------------------|--|------------------------------|--|--|
| | FLAT CUT | | Removal / Take Down | | 200ft Gravel Well | | Green Mt Power ROW |
| | FLR + FLAT CUT hwd/swd 12ft + | | Special Concern | | Ground Water Protection Area | | Structure |
| | FOLIAR SPRAY | | Well Location | | Town Line | | Transmission Line |
| | Required Contac - Customer | | Public Well | | Tax Parcel | | Threatened and Endangered Species - BMPs |
| | Priority Location | | 200ft Well Buffer | | State Forest | | No Herbicide Requested |

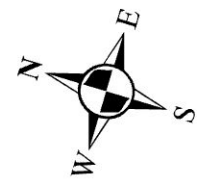
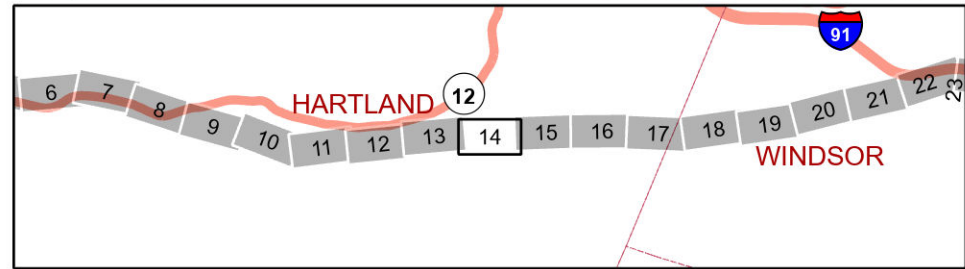


WINDSOR to TAFTSVILLE
Line# 105 46 kV

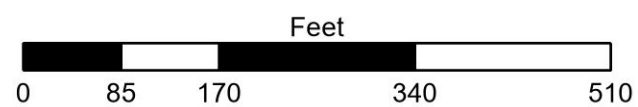


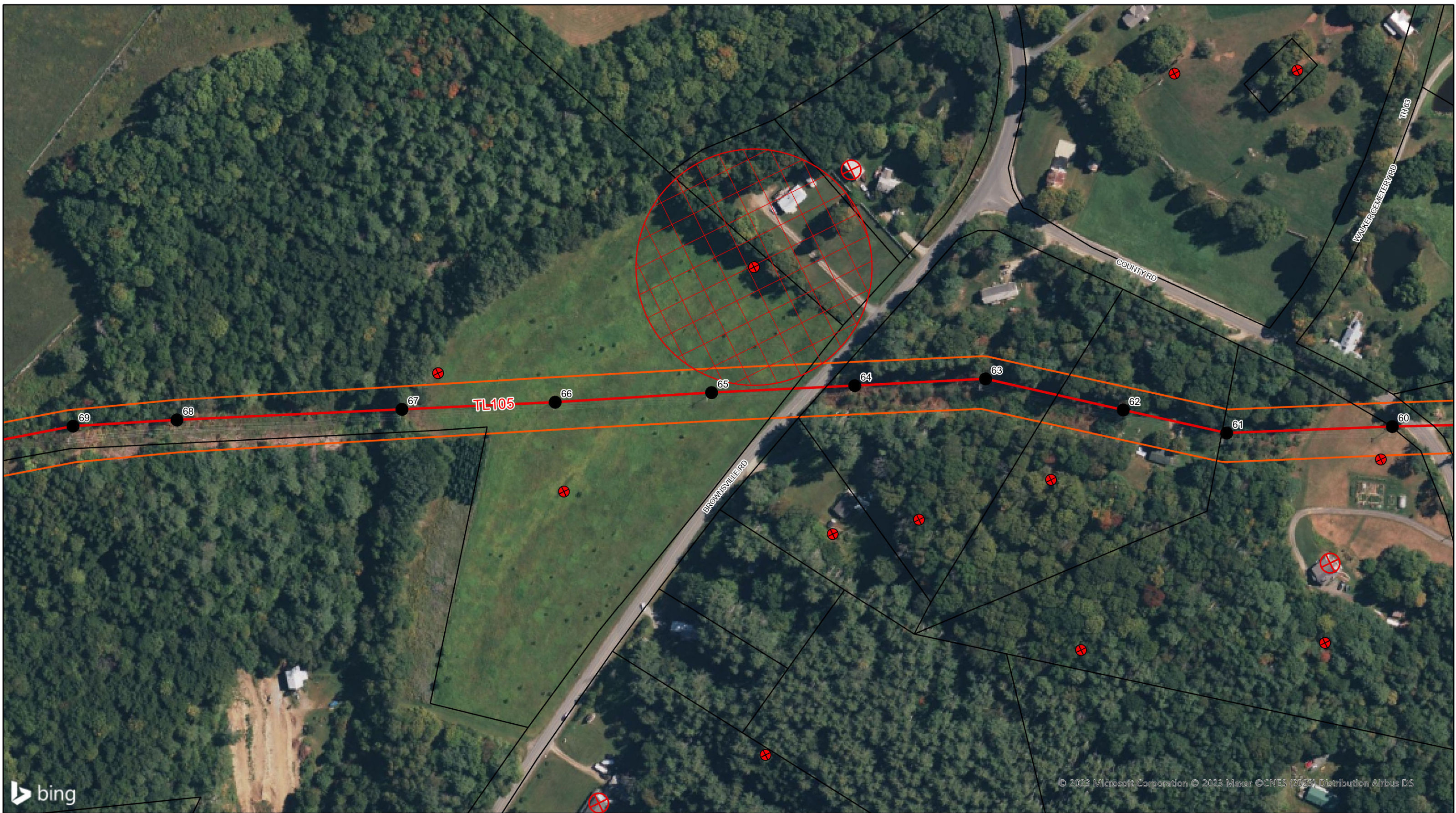


| | | | | | | | |
|--|-------------------------------|--|---------------------|--|------------------------------|--|--|
| | FLAT CUT | | Removal / Take Down | | 200ft Gravel Well | | Green Mt Power ROW |
| | FLR + FLAT CUT hwd/swd 12ft + | | Special Concern | | Ground Water Protection Area | | Structure |
| | FOLIAR SPRAY | | Well Location | | Town Line | | Transmission Line |
| | Required Contac - Customer | | Public Well | | Tax Parcel | | Threatened and Endangered Species - BMPs |
| | Priority Location | | 200ft Well Buffer | | State Forest | | No Herbicide Requested |



WINDSOR to TAFTSVILLE
Line# 105 46 kV

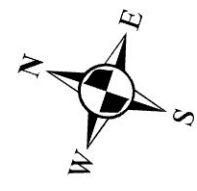
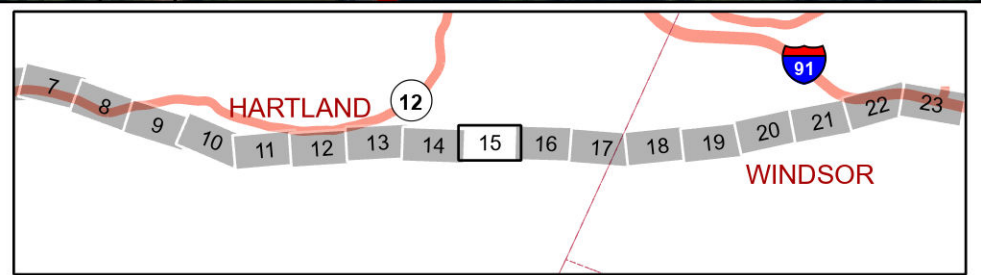




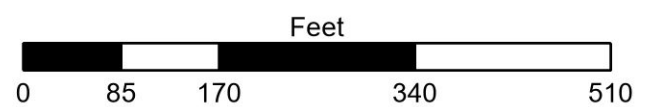
bing

© 2023 Microsoft Corporation © 2023 Maxar © CNES (2023) Distribution Airbus DS

| | | | | | | | |
|--|-------------------------------|--|---------------------|--|------------------------------|--|--|
| | FLAT CUT | | Removal / Take Down | | 200ft Gravel Well | | Green Mt Power ROW |
| | FLR + FLAT CUT hwd/swd 12ft + | | Special Concern | | Ground Water Protection Area | | Structure |
| | FOLIAR SPRAY | | Well Location | | Town Line | | Transmission Line |
| | Required Contac - Customer | | Public Well | | Tax Parcel | | Threatened and Endangered Species - BMPs |
| | Priority Location | | 200ft Well Buffer | | State Forest | | No Herbicide Requested |

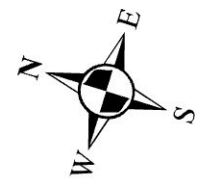
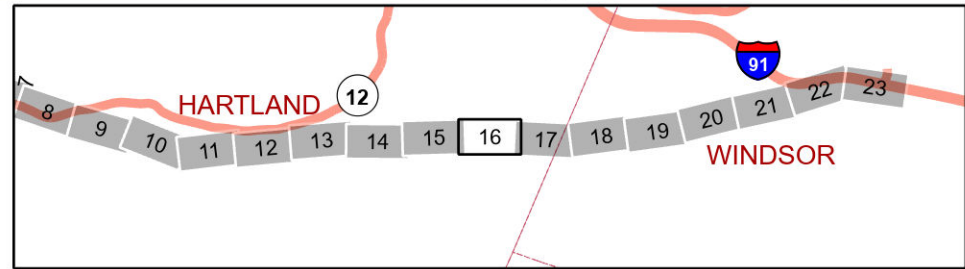


WINDSOR to TAFTSVILLE
Line# 105 46 kV

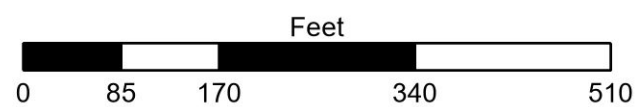




| | | | | | | | |
|--|-------------------------------|--|---------------------|--|------------------------------|--|--|
| | FLAT CUT | | Removal / Take Down | | 200ft Gravel Well | | Green Mt Power ROW |
| | FLR + FLAT CUT hwd/swd 12ft + | | Special Concern | | Ground Water Protection Area | | Structure |
| | FOLIAR SPRAY | | Well Location | | Town Line | | Transmission Line |
| | Required Contac - Customer | | Public Well | | Tax Parcel | | Threatened and Endangered Species - BMPs |
| | Priority Location | | 200ft Well Buffer | | State Forest | | No Herbicide Requested |



WINDSOR to TAFTSVILLE
Line# 105 46 kV



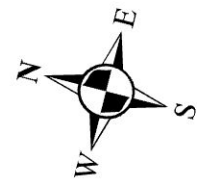
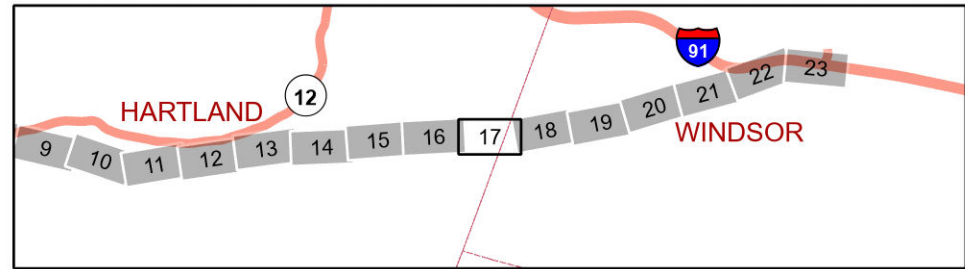
© 2023 Microsoft Corporation © 2023 Maxar © CNES (2023) Distribution Airbus DS



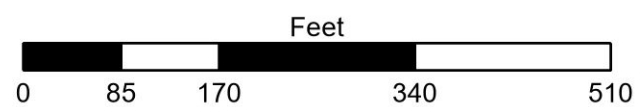
bing

© 2023 Microsoft Corporation © 2023 Maxar © CNES (2023) Distribution Airbus DS

| | | | | | | | |
|--|-------------------------------|--|---------------------|--|------------------------------|--|--|
| | FLAT CUT | | Removal / Take Down | | 200ft Gravel Well | | Green Mt Power ROW |
| | FLR + FLAT CUT hwd/swd 12ft + | | Special Concern | | Ground Water Protection Area | | Structure |
| | FOLIAR SPRAY | | Well Location | | Town Line | | Transmission Line |
| | Required Contac - Customer | | Public Well | | Tax Parcel | | Threatened and Endangered Species - BMPs |
| | Priority Location | | 200ft Well Buffer | | State Forest | | No Herbicide Requested |

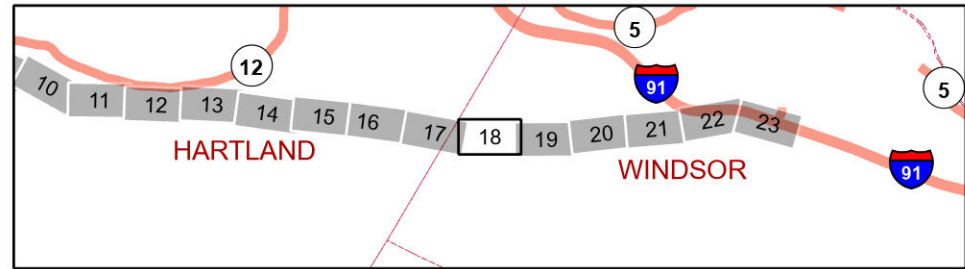


WINDSOR to TAFTSVILLE
Line# 105 46 kV

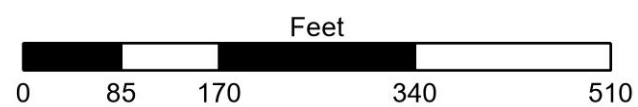


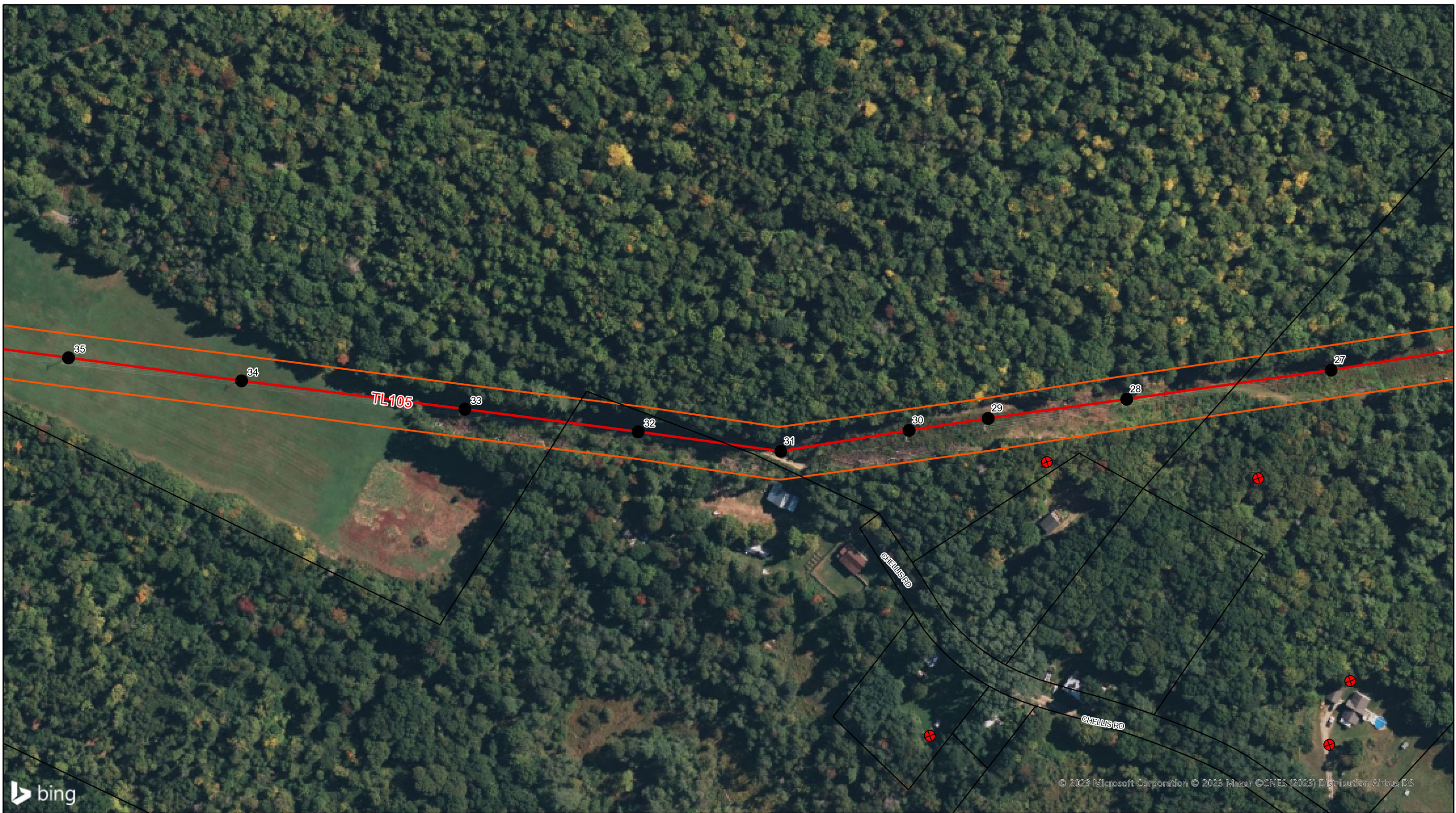


- | | | | |
|-------------------------------|---------------------|------------------------------|--|
| FLAT CUT | Removal / Take Down | 200ft Gravel Well | Green Mt Power ROW |
| FLR + FLAT CUT hwd/swd 12ft + | Special Concern | Ground Water Protection Area | Structure |
| FOLIAR SPRAY | Well Location | Town Line | Transmission Line |
| Required Contac - Customer | Public Well | Tax Parcel | Threatened and Endangered Species - BMPs |
| Priority Location | 200ft Well Buffer | State Forest | No Herbicide Requested |



WINDSOR to TAFTSVILLE
Line# 105 46 kV

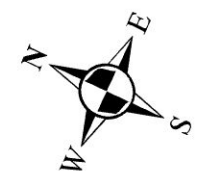
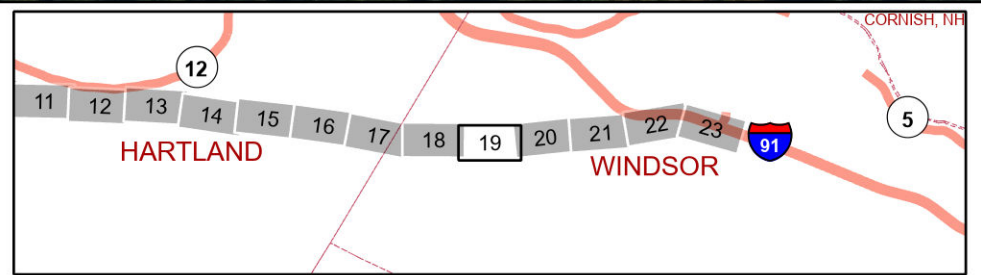




bing

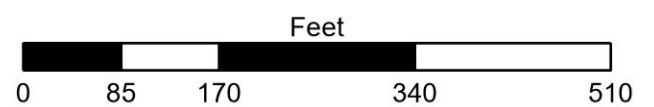
© 2023 Microsoft Corporation © 2023 Maxar © CNES (2023) Distribution Airbus DS

| | | | |
|-------------------------------|---------------------|------------------------------|--|
| FLAT CUT | Removal / Take Down | 200ft Gravel Well | Green Mt Power ROW |
| FLR + FLAT CUT hwd/swd 12ft + | Special Concern | Ground Water Protection Area | Structure |
| FOLIAR SPRAY | Well Location | Town Line | Transmission Line |
| Required Contac - Customer | Public Well | Tax Parcel | Threatened and Endangered Species - BMPs |
| Priority Location | 200ft Well Buffer | State Forest | No Herbicide Requested |



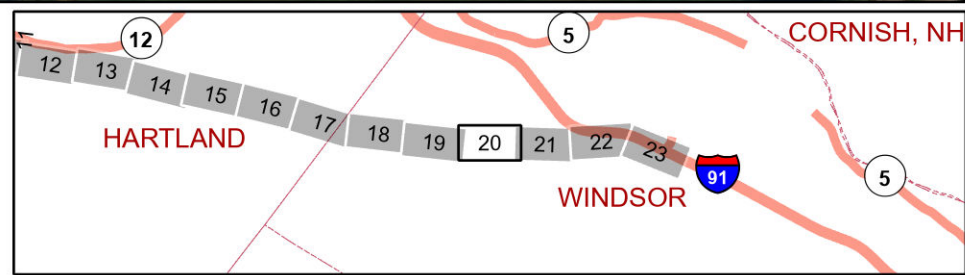
WINDSOR to TAFTSVILLE

Line# 105 46 kV

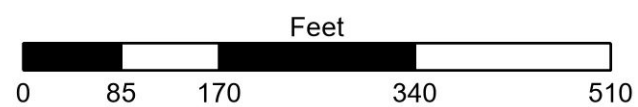




| | | | | | | | |
|--|-------------------------------|--|---------------------|--|------------------------------|--|--|
| | FLAT CUT | | Removal / Take Down | | 200ft Gravel Well | | Green Mt Power ROW |
| | FLR + FLAT CUT hwd/swd 12ft + | | Special Concern | | Ground Water Protection Area | | Structure |
| | FOLIAR SPRAY | | Well Location | | Town Line | | Transmission Line |
| | Required Contac - Customer | | Public Well | | Tax Parcel | | Threatened and Endangered Species - BMPs |
| | Priority Location | | 200ft Well Buffer | | State Forest | | No Herbicide Requested |



WINDSOR to TAFTSVILLE
Line# 105 46 kV



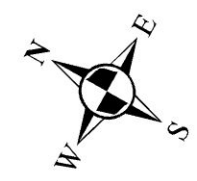
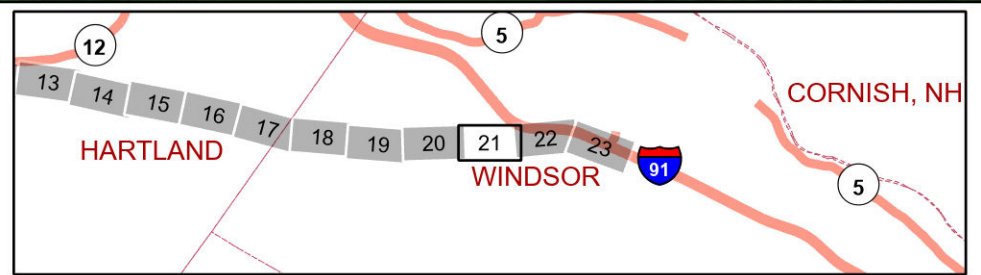
© 2023 Microsoft Corporation © 2023 Maxar ©CNES (2023) Distribution Airbus DS



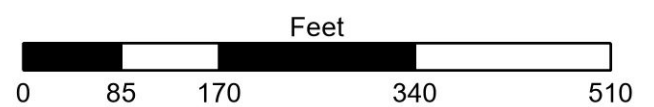
bing

© 2023 Microsoft Corporation © 2023 Maxar © CNES (2023) Distribution Airbus DS

| | | | | | | | |
|--|-------------------------------|--|---------------------|--|------------------------------|--|--|
| | FLAT CUT | | Removal / Take Down | | 200ft Gravel Well | | Green Mt Power ROW |
| | FLR + FLAT CUT hwd/swd 12ft + | | Special Concern | | Ground Water Protection Area | | Structure |
| | FOLIAR SPRAY | | Well Location | | Town Line | | Transmission Line |
| | Required Contac - Customer | | Public Well | | Tax Parcel | | Threatened and Endangered Species - BMPs |
| | Priority Location | | 200ft Well Buffer | | State Forest | | No Herbicide Requested |



WINDSOR to TAFTSVILLE
Line# 105 46 kV

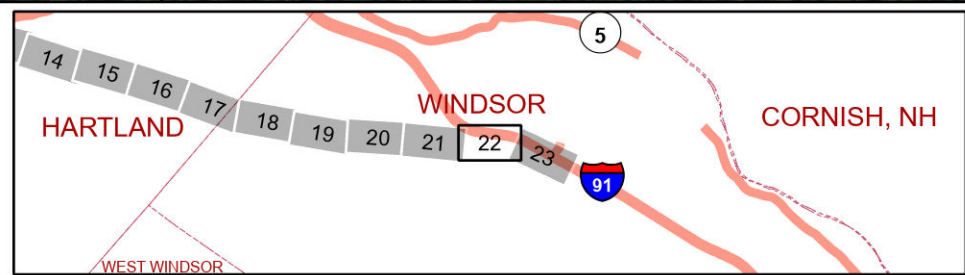




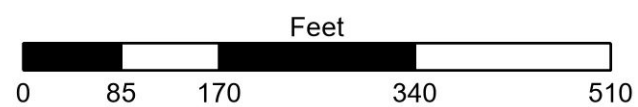
bing

© 2023 Microsoft Corporation © 2023 Maxar © CNES (2023) Distribution Airbus DS

| | | | | | | | |
|--|-------------------------------|--|---------------------|--|------------------------------|--|--|
| | FLAT CUT | | Removal / Take Down | | 200ft Gravel Well | | Green Mt Power ROW |
| | FLR + FLAT CUT hwd/swd 12ft + | | Special Concern | | Ground Water Protection Area | | Structure |
| | FOLIAR SPRAY | | Well Location | | Town Line | | Transmission Line |
| | Required Contac - Customer | | Public Well | | Tax Parcel | | Threatened and Endangered Species - BMPs |
| | Priority Location | | 200ft Well Buffer | | State Forest | | No Herbicide Requested |



WINDSOR to TAFTSVILLE
Line# 105 46 kV

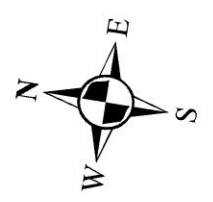
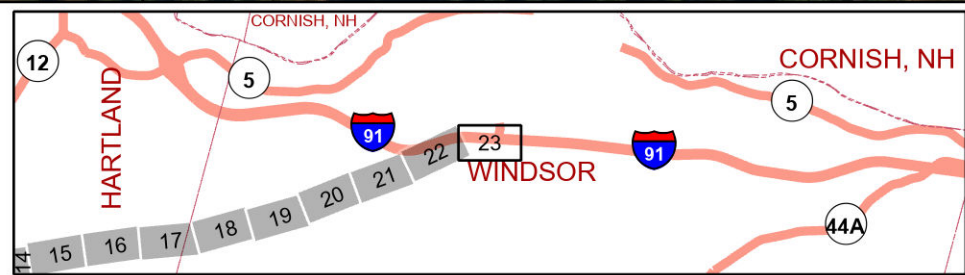




bing

© 2023 Microsoft Corporation © 2023 Maxar © CNES (2023) Distribution Airbus DS

| | | | | | | | |
|--|-------------------------------|--|---------------------|--|------------------------------|--|--|
| | FLAT CUT | | Removal / Take Down | | 200ft Gravel Well | | Green Mt Power ROW |
| | FLR + FLAT CUT hwd/swd 12ft + | | Special Concern | | Ground Water Protection Area | | Structure |
| | FOLIAR SPRAY | | Well Location | | Town Line | | Transmission Line |
| | Required Contac - Customer | | Public Well | | Tax Parcel | | Threatened and Endangered Species - BMPs |
| | Priority Location | | 200ft Well Buffer | | State Forest | | No Herbicide Requested |



WINDSOR to TAFTSVILLE
Line# 105 46 kV

