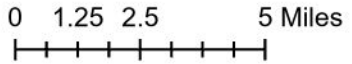
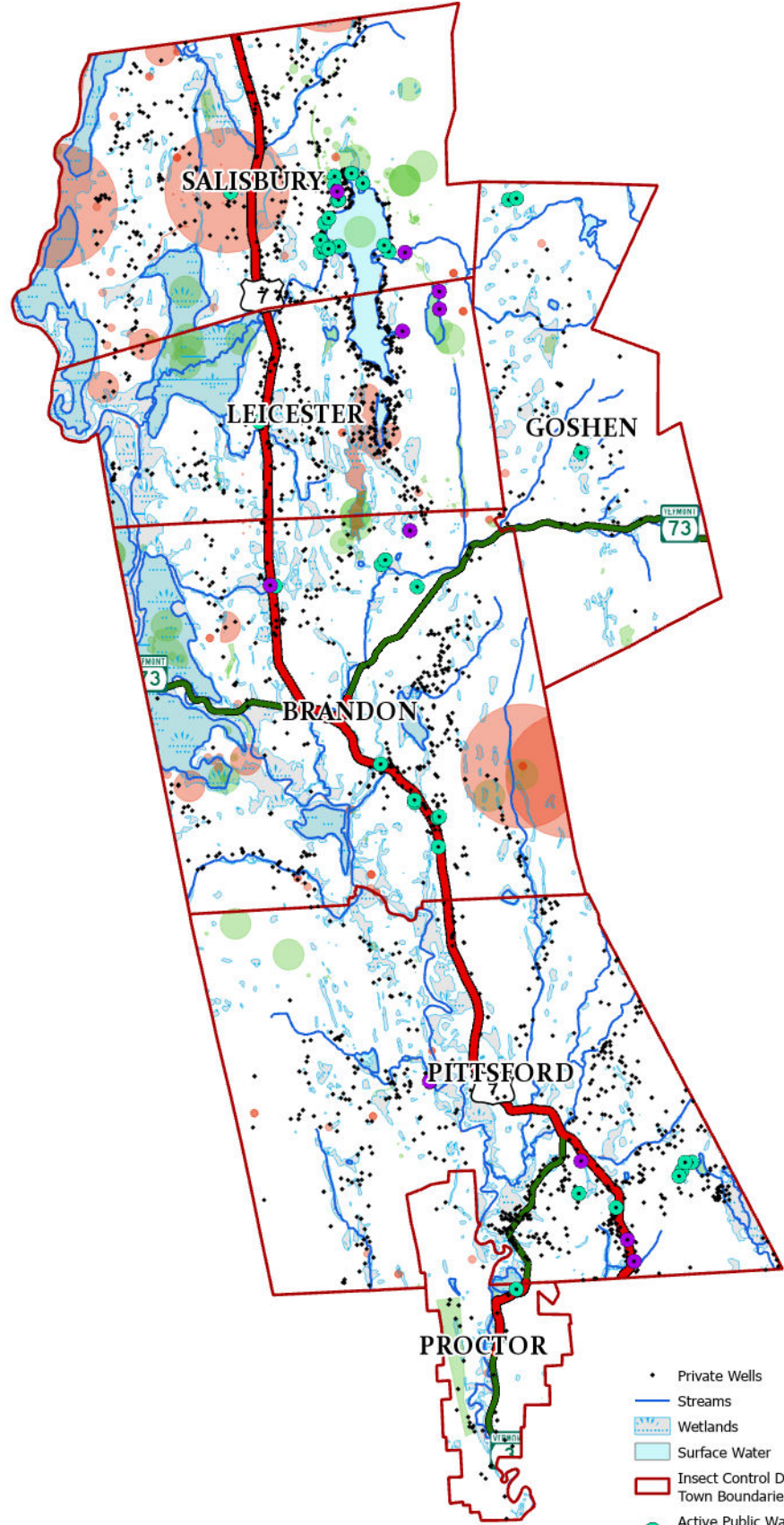
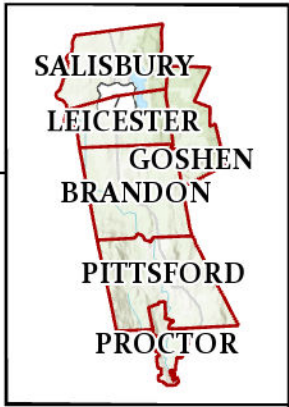


# Otter Creek Watershed Insect Control District

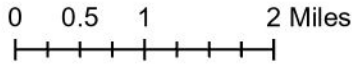
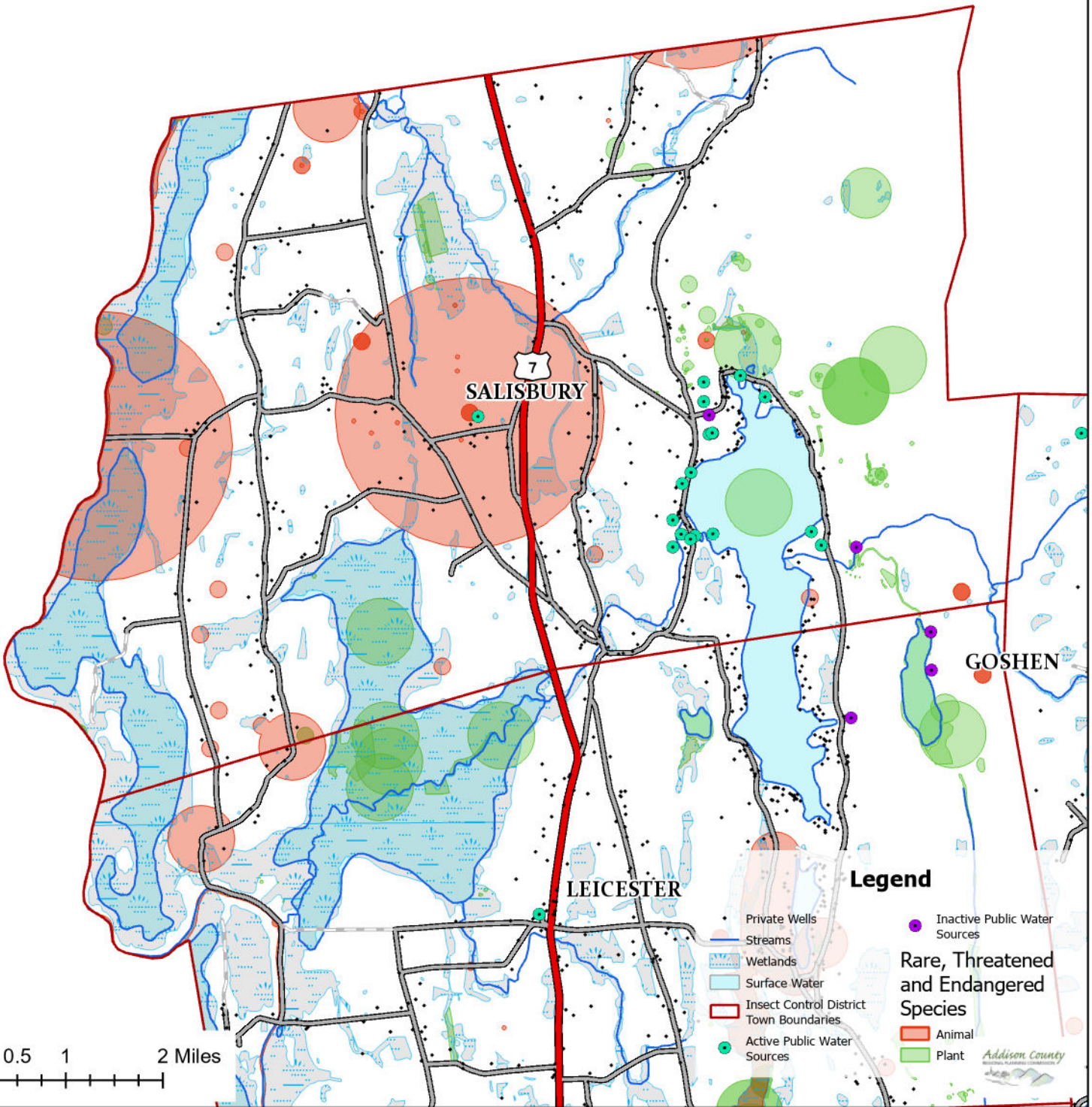
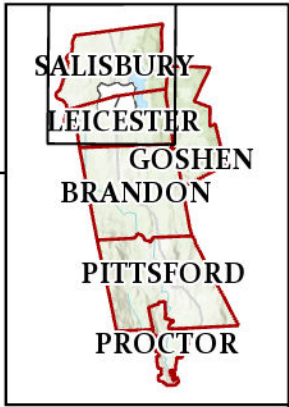


## Legend

- Private Wells
- Streams
- Wetlands
- Surface Water
- Insect Control District
- Town Boundaries
- Active Public Water Sources
- Inactive Public Water Sources
- Rare, Threatened and Endangered Species
- Animal
- Plant

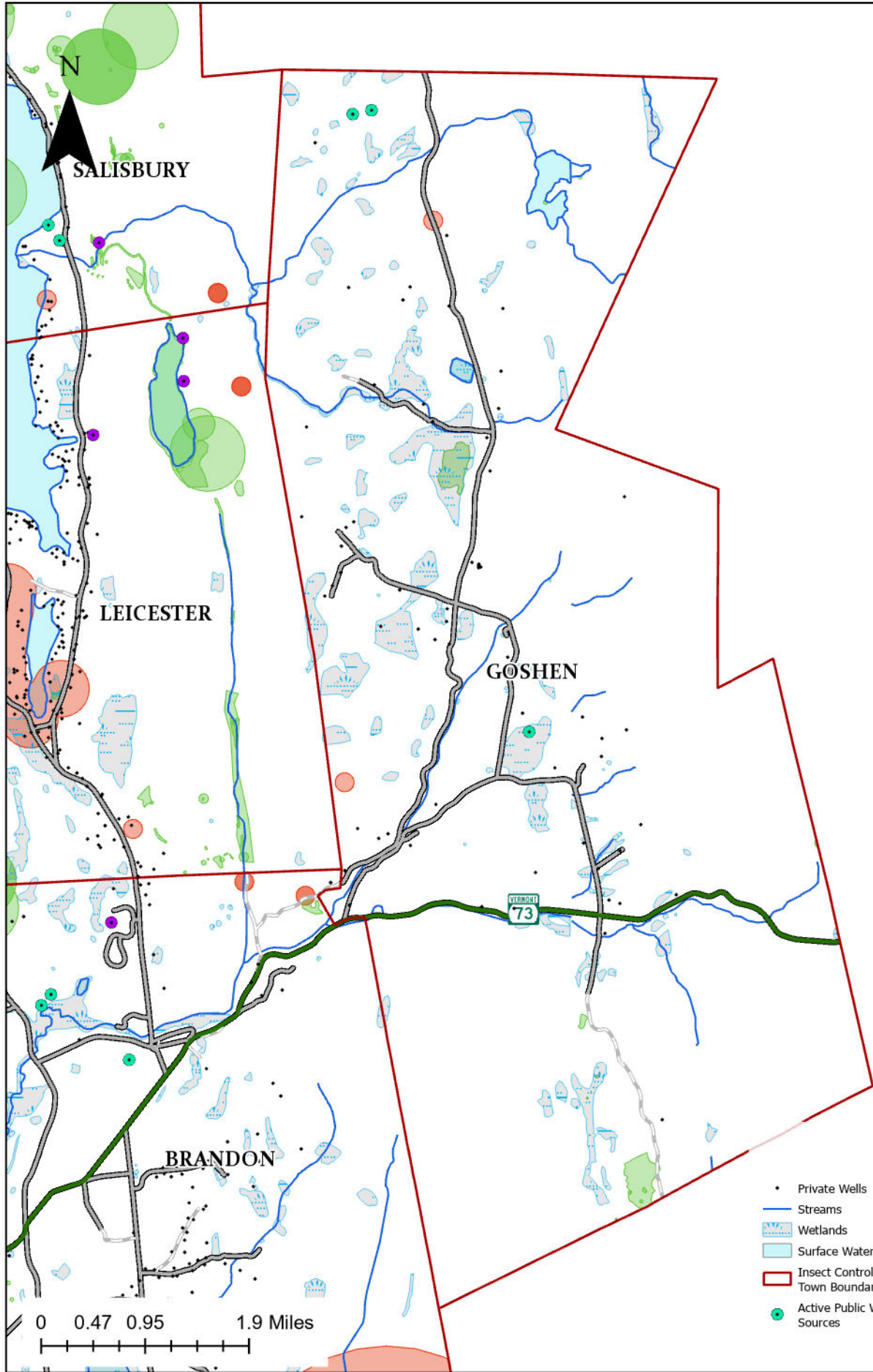
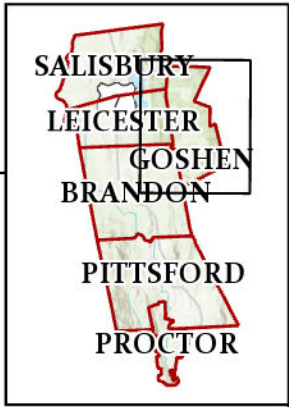


# Salisbury



- Legend**
- Private Wells
  - Streams
  - Wetlands
  - Surface Water
  - Insect Control District
  - Town Boundaries
  - Active Public Water Sources
  - Inactive Public Water Sources
  - Rare, Threatened and Endangered Species
    - Animal
    - Plant
- Addison County*  
NATURAL PLANNING COMMISSION

# Goshen

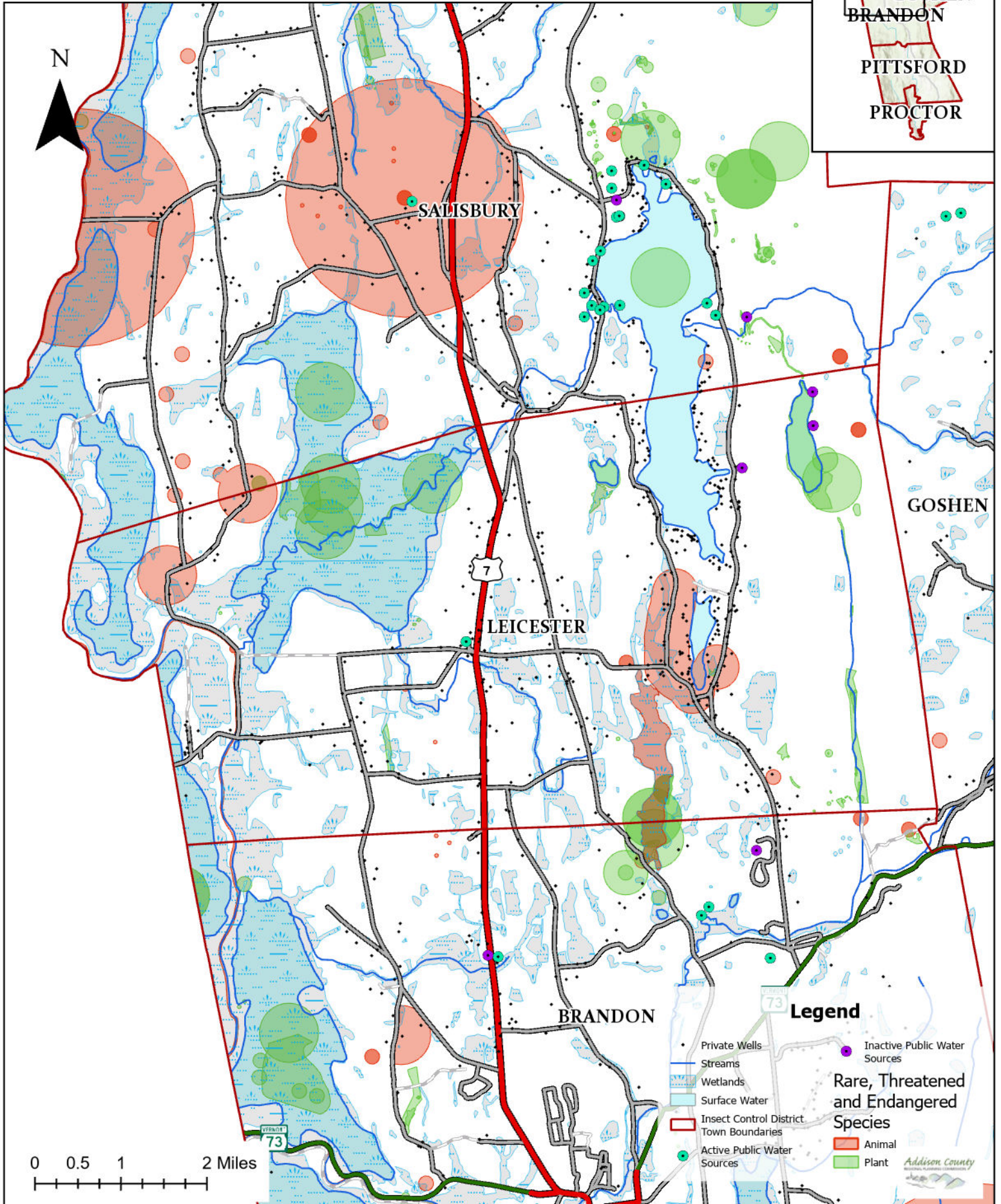


## Legend

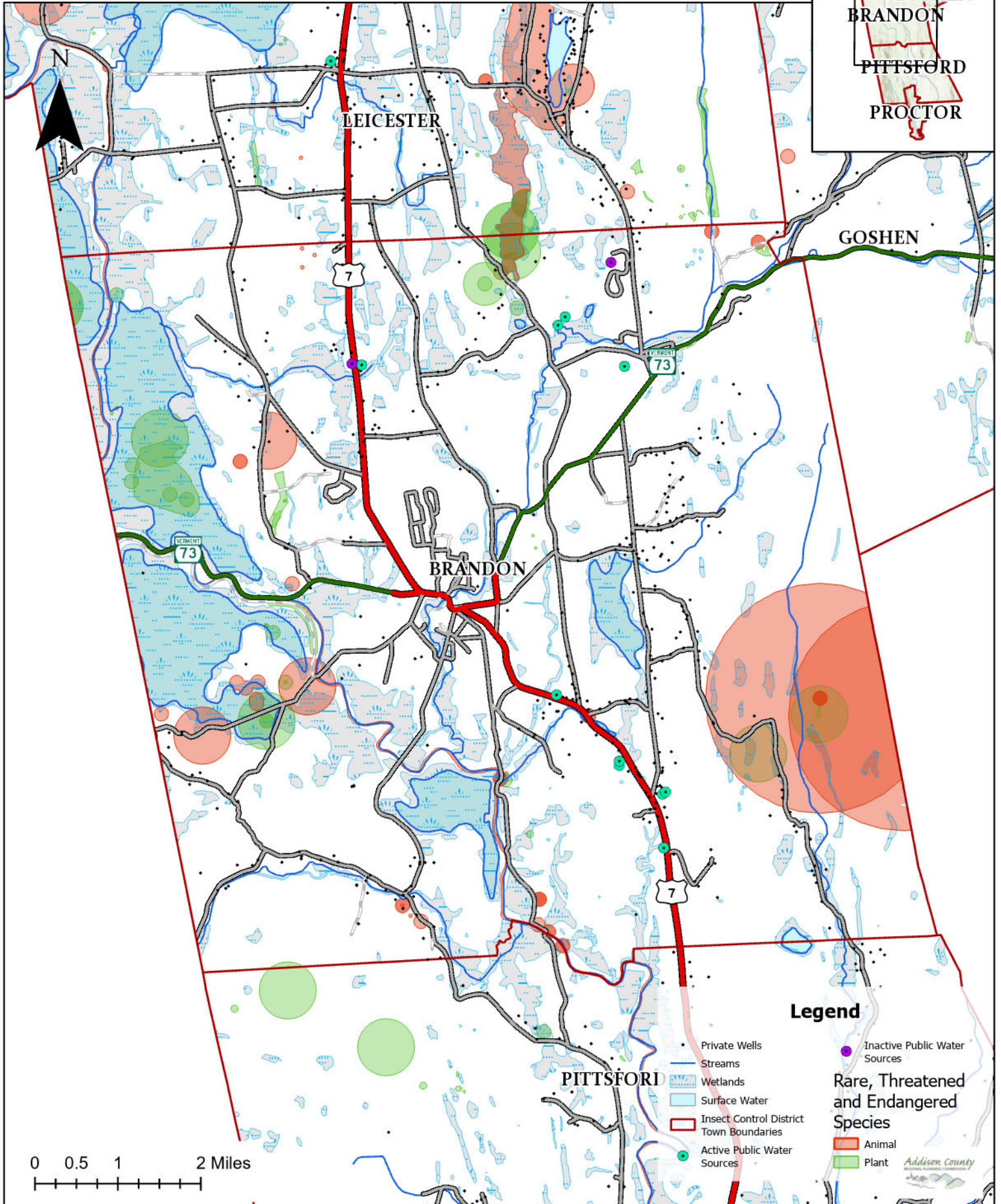
- Private Wells
- Streams
- Wetlands
- Surface Water
- Insect Control District
- Town Boundaries
- Active Public Water Sources
- Inactive Public Water Sources
- Rare, Threatened and Endangered Species
- Animal
- Plant



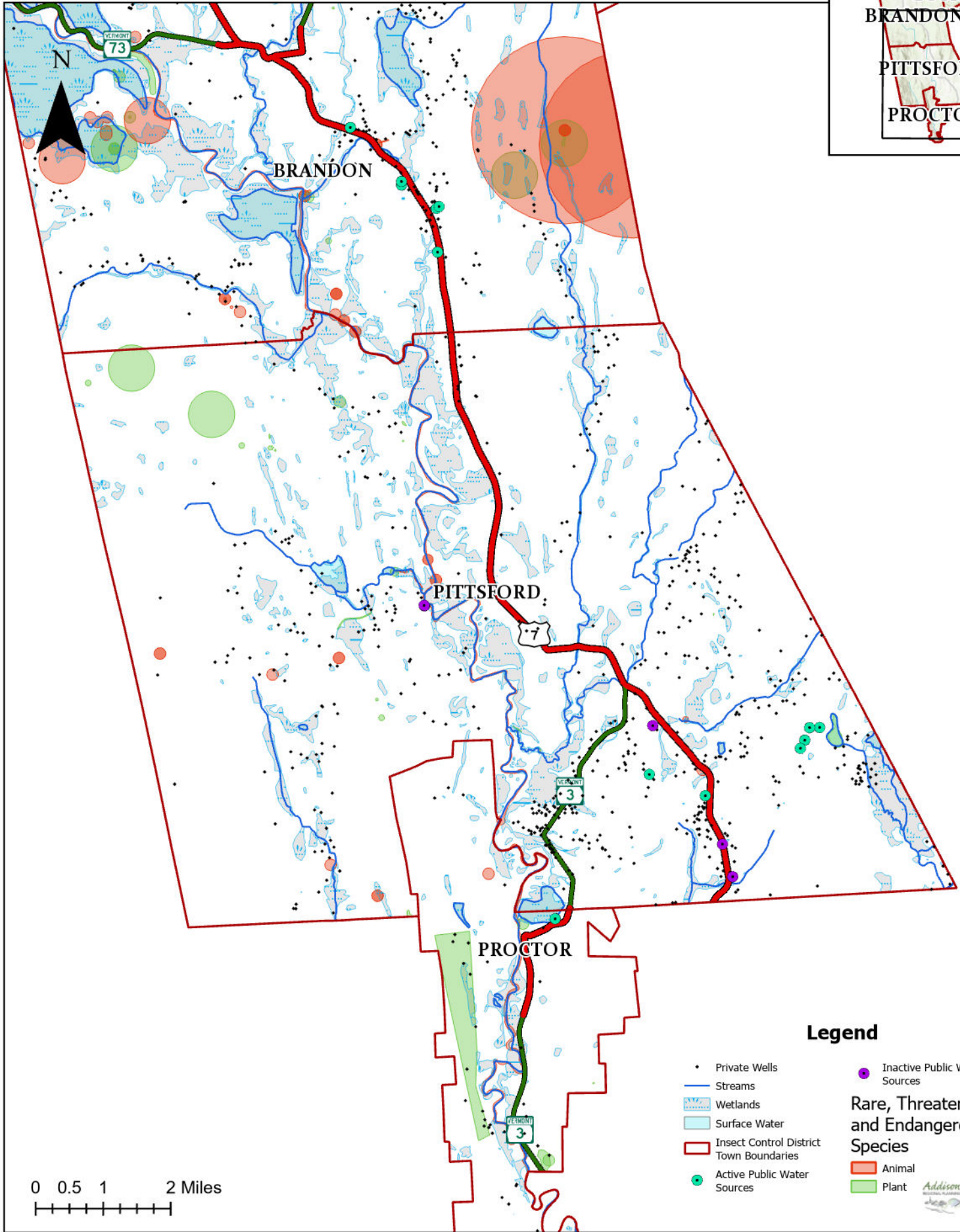
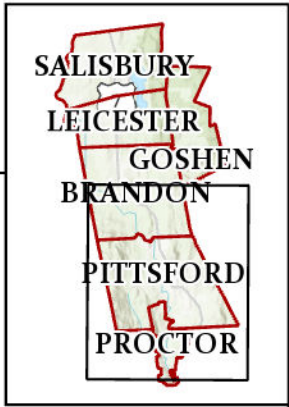
# Leicester



# Brandon



# Pittsford



## Legend

- Private Wells
- Streams
- Wetlands
- Surface Water
- Insect Control District
- Town Boundaries
- Active Public Water Sources
- Inactive Public Water Sources
- Rare, Threatened and Endangered Species
  - Animal
  - Plant

# Proctor

