

# AGRIVIEW



Published monthly by the Vermont Agency of Agriculture • [www.Agriculture.Vermont.gov](http://www.Agriculture.Vermont.gov)

## Why Dairy Processing Matters

*Investing \$12 Million into Processor Expansion for the Region*

By Katie Spring, Northeast Dairy Business Innovation Center

When Danone/Horizon canceled contracts with 89 organic dairies in New England and eastern New York in 2021, the company cited transportation and operational challenges, pointing to a weakness in the region’s dairy sector: lack of processing capacity. Since processing plants often co-pack and process milk from multiple states, closure in one state leads to a lack of capacity across the region. Just as farms have consolidated and become bigger, processing plants have done so, too, with larger milk plants establishing outside of New England. Trading long milk routes and multi-day



driving jobs for proximity to a processing plant, Danone exited the region to work instead with farms closer to its Western NY plant.

On the flip side of these

challenges are the Northeast’s strengths: a network of dairy farmers committed to environmental sustainability, animal welfare, business efficiency, producing high-

quality milk that’s the foundation of some of the best dairy products in the country, a strong local food system and proximity to major markets including Boston and New York City. At the request of USDA Secretary Vilsack to provide an actionable response to Danone/Horizon leaving, the Vermont Agency of Agriculture, Food & Markets convened the Northeast Dairy Task Force to recommend long-term systems improvement for the Northeast dairy sector.

The task force came back with a clear call to action to invest in dairy processing, writing: “The impact of processing investment will advance regional capacity in meaningful ways and better position the sector

*continued on page 2*



**Vermont Agency of Agriculture, Food & Markets**

116 State Street  
Montpelier, Vermont 05620-2901

CHANGE SERVICE REQUESTED

Nonprofit Org  
US Postage  
PAID  
Permit #10  
White River Jct VT

### Inside This Issue

- The View from 116 State Street . . . . . Page 2
- Rotational Grazing Funding . . . . . Page 3
- Dairy Grants . . . . . Page 3
- Dairy Food Safety . . . . . Page 4
- Open Farm Week . . . . . Page 5
- ECO AmeriCorps . . . . . Page 5
- Business Sense Training. . Page 6
- Heat-related Illnesses. . . Page 7
- Farm Connex . . . . . Page 8
- Farm & Food Workers Relief Program . . . . . Page 9
- Vermont Vegetable and Berry News . . . . . Page 10

- Classifieds . . . . . Page 11
- NE Regional Food Business Center . . . . . Page 13
- Growing Herbs for Tea . Page 14
- 2023 Fantastic Farmer . Page 15
- Vermont’s Agricultural Water Quality . . . . . Page 16



# The Gifts of Spring

**D**airy contributes to our diet every day, and in June, we celebrate our delicious local dairy options. We fuel up at breakfast with fresh Vermont yogurt, at lunch with grilled cheese. For dinner, it's something from the grill— perhaps a juicy burger with Vermont cheese. Time for dessert? Don't forget the treats. Cheesecake with Vermont cream cheese, cakes with fresh butter, and pudding with Vermont cream. Maybe it's visiting your favorite ice cream or creemee stand after a long day of work. It's the season to celebrate the farmers who make it possible.

Maybe you like your milk with

maple. A cool maple milkshake serves up the best of both worlds. Several of our dairy farmers are also maple producers. Maple is a spring tradition rooted in Vermont's working lands. From spring sugaring season to colorful fall foliage, we think of our farmers and the work they do so that local food, recreation, and tourism can thrive in our Green Mountains.

Like craft beer, wine, and spirits, dairy is another quality Vermont product produced on the farm. And like our winning beverage industry, we take our world-class cheese seriously: Vermont has the most artisan cheese makers per capita in the United States.

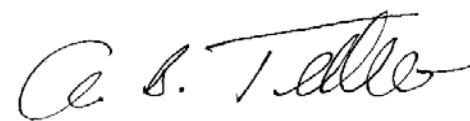
For decades, Vermont's dairy farms have shaped our land and our way of life. Each great tasting and nutritious glass of milk also continues to drive economic growth— providing thousands of jobs and supporting many other businesses. Dairy farmers care for the land, the animals, and the people who depend on them. They invest in conservation practices that benefit water quality and soil health.

From farm to table, from

Vermont's green fields to coffee and cone - dairy products are everywhere, thanks to farmers who work tirelessly to produce high-quality dairy products.

June will fly by, but let's pause and thank our dairy farmers who make it all possible. It's time to celebrate the cows, the goats, the sheep, the land, and our hard-working farm families.

Now, back to that creemee.



Anson Tebbetts,  
Secretary, Agency of Agriculture, Food & Markets

CONNECT  
WITH US



@VTAGENCYOFAG



AGRIVIEW

(UPS 009-700)

*Agriview* is Vermont's Agricultural  
Publication of Record.

It is published monthly by the  
Vermont Agency of  
Agriculture Food & Markets,  
116 State Street,  
Montpelier, VT 05620-2901

Telephone: 802-828-1619

[www.Agriculture.Vermont.gov](http://www.Agriculture.Vermont.gov)

ANSON TEBBETTS, Secretary  
Agency of Agriculture,  
Food & Markets

TERRY SMITH  
Editor

FAITH RAYMOND, Managing Editor

SCOTT WATERMAN, Contributing Editor

Advertising and subscriptions:  
E-mail: [agr.agriview@vermont.gov](mailto:agr.agriview@vermont.gov)

*The State of Vermont is an Equal Opportunity/  
Affirmative Action Employer and Provider.*

## This Month's Recipe

### Strawberry Protein Smoothie

*Makes one delicious serving.*

#### Ingredients

- 1 cup milk
- 1 cup strawberries
- 1/3 cup Greek yogurt
- 3 Tbsp peanut butter (almond, sunflower or other works too!)

#### Directions

1. Combine all ingredients in a blender.
2. Cover and blend until smooth.



## Dairy Processing

*continued from page 1*

for the next decade and beyond." They recommended two approaches to processing expansion: "First, invest catalytic levels of funding into existing successful track-record processors who are positioned and can scale production quickly; and second, invest in new processing facilities to continue to develop system flexibility."

Based on the Task Force's recommendations, the USDA

awarded the Northeast Dairy Business Innovation Center (NE-DBIC) an additional \$19 million to address the stability and viability of Northeast regional dairy. Now, the NE-DBIC is making those catalytic investments in dairy processing with the Existing Dairy Processor Expansion Grant. With \$12 million in total funding, this grant is one of three processing-focused funding opportunities. A \$1 million Dairy Processing Research & Development Innovation Grant closed in March, while a grant

focused on developing new dairy processors is due to come out later this year. This investment will help ensure dairy farms have options for their milk and increase the amount of local dairy on store shelves throughout the region.

To learn more about the NE-DBIC dairy processing grants, visit our website: [agriculture.vermont.gov/dbic/grants](http://agriculture.vermont.gov/dbic/grants)

To read the full Northeast Dairy Task Force report, visit: [agriculture.vermont.gov/administration/danonehorizon-task-force](http://agriculture.vermont.gov/administration/danonehorizon-task-force)



# FAP Rotational Grazing Application Due June 15

By Annika Fuller, ECO AmeriCorps

There hasn't been a better time to apply for the Agency's Farm Agronomic Practices Program (FAP). The Agency of Agriculture, Food & Markets offers funding through the FAP program for soil-based agronomic practices that improve soil quality, increase crop production, and reduce erosion and surface runoff. Previously, the funding cap through FAP was \$8,000. Beginning July 1, 2023, that cap will increase to \$10,000.

The Agency is excited to be able to support more conservation practices on each farm due to this increased cap. Thanks to the State of Vermont bookmarking a portion of federal one-time funds from the American Rescue Plan Act (ARPA) to climate change mitigation, the FAP program is currently supported by "the most money it has ever had," according to Administrative Services Manager and longtime State employee Jeff Cook.

If you are ready to take advantage of this increased cap and influx of financial support for farmers and the



environment, the rotational grazing application is due June 15. Down the road, the application deadline for cover crop and fall manure injection will be August 1, and April 15 for next spring's conservation practices.

Amber Reed provides pasture technical assistance at UVM Extension and frequently recommends the FAP program to farmers, especially those who rotationally graze. The FAP program pays \$30 per acre for rotational grazing.

"It's inherently rewarding to have good results from rotational pasture management and see your animal growth and performance improve, but it does take a lot of time and effort, so it's helpful to have the

benefit from the state in the short term," Reed said.

Reed sees rotational grazing as an effort to mimic nature. "Ruminants in general evolved to take some bites, leave and not come back to that place for a while. The electric fence is the wolf, keeping the animals away for a while to let the grass regrow," Reed said.

Returning to some degree to how nature functioned before farming and fences has a wide variety of benefits to the animals and landscape. There is an increase in biodiversity and wildlife. Water quality also improves as the soil strengthens and the pasture vegetation thickens. According to Reed, rotationally grazed animals

also tend to have fewer parasites, making them healthier – and cleaner when they are ready to be processed.

If you are considering applying for the rotational grazing practice under the FAP program, "don't do it last minute," Reed said. A grazing plan is required when applying for the FAP program. Building a rotational grazing plan that fits a farm's specific situation takes time and knowledge, but Reed says that having a plan is important to creating the positive impacts on animals and pastures that rotational grazing can provide.

Luckily, farms can get help from UVM Extension, the Agency's Pasture and Surface Water Fencing Program, NRCS, Vermont's Housing and Conservation Board, and their local conservation districts to help create a rotational grazing plan or to improve the one they have. You can also find a grazing plan template at [agriculture.vermont.gov/fap](https://agriculture.vermont.gov/fap), alongside the FAP application.

If you rotationally graze, apply to FAP now and be sure to include in your application any other eligible practices that you plan to install by June 30, 2024.

## Current and Upcoming Grants for Dairy Processors Across the Northeast

By Ali Boochever, Northeast Dairy Business Innovation Center

As part of an ongoing effort to increase sustainability and resilience of the dairy supply chain across our 11-state region, the Northeast Dairy Business Innovation Center (NE-DBIC) announces two open and one upcoming grant for cow, goat, and sheep dairy processors. Find the Request for Applications (RFA) for the grants

below, plus our full funding calendar, on our website: <https://agriculture.vermont.gov/dbic/grants>

### Existing Dairy Processor Expansion Grant

With a goal to diversify and strengthen the supply chain for dairy farmers and consumers, this grant offers existing dairy processors across the Northeast funding to acquire specialized equipment needed to increase the processing capacity of

regionally produced milk and other activities to support expansion and meet demand.

The RFA for the single-stage Tier 3 application for smaller processors whose volume of milk utilized on an average production day is under 1,000 pounds, is now available. The application period is open until August 24, 2023 at 2:00 PM ET. Awards for Tier 3 will range from \$25,000 to \$250,000, with a 25% match requirement. Meanwhile, the

multi-stage Tier 1 and 2 will invite a subset of pre-applicants to submit full applications.

### Dairy Marketing & Branding Services Grant

This grant provides funds for established value-added dairy processors and producer associations to access professional marketing and branding services. Funded projects will increase consumer awareness of

*continued on page 4*



## DAIRY BUSINESS INNOVATION CENTER

# Announcing Dairy Food Safety and Certification Grantees

By Katie Spring, Northeast Dairy Business Innovation Center

The Northeast Dairy Business Innovation Center is pleased to announce seven recipients of the Dairy Food Safety & Certification Grant. Awards range from \$16,000 - \$40,000, with a total of \$225,000 in overall funding, and allow dairy farmers and processors to take actionable steps to improve the safety of dairy products and improve marketability.

Three Vermont businesses are among the grantees:

Maplebrook Farm will

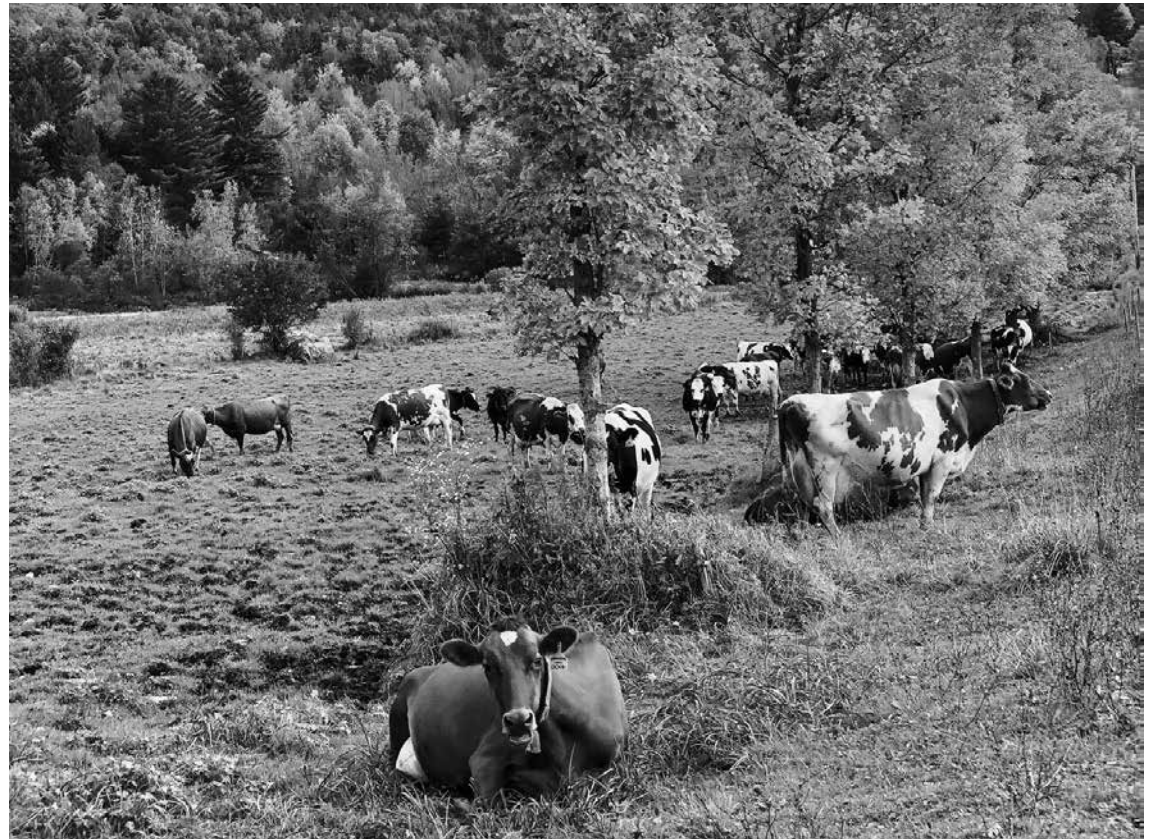
purchase a butter extruder and install upgrades to their pasteurizer, allowing them to process and market buttermilk derived from their butter making process. This equipment and upgrades will increase food safety and labor efficiency.

Mt. Mansfield Creamery, LLC will purchase both a portable and stationary bulk tank, along with a milk pump, to improve milk transportation from their farm to their creamery. Moving from milk cans to a bulk tank will increase food safety, labor efficiency, and allow for increased production.

von Trapp Farmstead will purchase new cheese forms and complete a cleaning validation study on the forms to increase food safety, employee safety, and product quality.

Recipients also include farmers and processors in Maine, New York, and Pennsylvania. These grant projects include installing pasteurizers, milk meters, and making creamery

upgrades. The Dairy Food Safety & Certification Grant is expected to open again in December. Learn more on our website: <https://agriculture.vermont.gov/dbic/grants>



## Dairy Promotion Grants Available for Vermont Farmers

Elicia Pinsonault, New England Dairy

New England Dairy's dairy promotion grant program helps farmers build trust in dairy, educate consumers, and increase consumption. The grant application will be available beginning June 12 and the deadline to apply is July 14. Farmers can apply online: [bit.ly/NED-promotion-grants](http://bit.ly/NED-promotion-grants).

Farmers planning local dairy promotion activities can apply for up to \$2,400 annually. Examples of activities that would be considered for funding include events that bring dairy into the community, on-farm events, campaigns to connect with consumers on social media, and more. Applicants must be associated with the production of cow milk as a dairy producer.

For more information, contact Farmer Relations Manager Elicia Pinsonault at [epinsonault@newengland-dairy.com](mailto:epinsonault@newengland-dairy.com) or (617) 380-3941.

### Dairy Processing Grants *continued from page 3*

products, develop market channels and distribution opportunities to increase product placement, support innovative strategies to increase consumption, and/or increase business revenue. Grant funds will prioritize the grantee hiring a professional marketing/branding contractor to develop strategy and/or content.

Awards will range from \$10,000 to \$50,000 with a

match requirement of 25%. Application is open until June 8th at 2:00 PM ET.

### Upcoming Opportunity: Dairy Packaging Innovation Grant

Northeast dairy businesses looking for sustainable product packaging solutions can apply for funding this summer. This program will provide funding to support modernized packaging initiatives that prioritize sustainability, scalability, and marketability.

This grant round will include a two-step application process. Following the review of pre-applications, a subset of applicants will be invited to submit a full application. Awards will range from \$75,000 to \$350,000 with a 25% (cash or in-kind) match commitment required. Stay tuned for more information coming this summer!

For more information about these grants, contact the NE-DBIC team at [agr.dairyinnovation@vermont.gov](mailto:agr.dairyinnovation@vermont.gov)



# Open Farm Week Registration Now Open!

By Kristen Brassard, VT Agency of Agriculture, Food & Markets



It's that time of year again. Registration is now open for the 9th Annual Vermont Open Farm Week. This year's event is scheduled to take place August 6 - 13, 2023 so mark your calendars and get ready to show off your farm to the world!

Open Farm Week is a fantastic opportunity to connect with your community, engage with customers, and showcase what makes your farm special. And the best part? You get to do it on your terms. You can choose any day during the week to host

an event or have events on multiple days – whatever works best for your schedule.

Before you get started, there are a few important details to keep in mind. First, Open Farm Week events need to have an activity (big or small) that is not a part of your regular farm schedule. This is to ensure that visitors have a unique experience and get to interact with farmers in a meaningful way. But don't worry, the possibilities are endless!

You can offer tours of your fields or barns, host tastings or cooking demonstrations, or even sell your products directly to visitors. The sky's the limit!

There is a cost to participate in Open Farm Week, but this year there are a range of registration fees available in an effort to make the event accessible to all farms. The fees go towards coordination and planning of the week-long event, registration management and outreach, website promotion, advertising, marketing materials and promotional resources for each farm, technical assistance, and in-state marketing and promotion

through the many communication channels of the DigInVT committee organizations. And if you're interested in being a Featured Open Farm Week Farm, there's an option to pay an additional \$20 to have your event promoted to a targeted audience and have your farm prioritized in media outreach.

If you're new to hosting visitors on your farm, there are plenty of resources available to help you plan and execute a successful Open Farm Week event. The UVM Extension's Vermont Agritourism Collaborative has a wealth of information and resources on all things agritourism for farms. You can check out these

resources by visiting [uvm.edu/vtagritourism](http://uvm.edu/vtagritourism).

If you're feeling overwhelmed or need extra help getting started, the Open Farm Week team is available to provide resources and technical assistance to a limited number of farms.

Whether you need help developing ideas or preparing for visitors, they can help you develop a plan that's right for your farm and community.

Register for Open Farm Week today and get ready to showcase your farm to the world. We can't wait to visit you this summer.

Visit [diginvt.com/blog/openfarmweekforfarmers](http://diginvt.com/blog/openfarmweekforfarmers) to learn more and register by July 1st!

## Pesticide Applicator Certification Exams

By Stephanie Smith, VT Agency of Agriculture, Food & Markets

Are you ready to take a Pesticide Applicator certification exam? Have you studied the appropriate materials? Do you know which exam or exams you need to become certified or licensed? Are you 18 or older? To take an exam you must register by contacting the Certification & Training coordinator at least a week (7 days) in advance at 802-461-6118.

All exams are given by the Vermont Agency of Agriculture, Food & Markets.

- All exams are CLOSED BOOK
- Please bring a calculator
- Please bring a current, state-issued, picture ID (required)

There is no cost to sit for (take) exams, *however* there is a fee for obtaining certification.

**Montpelier**  
Every Wednesday  
9:00 am – 12:00 pm

**St. Johnsbury**  
Monthly  
Every 2nd Thursday  
9:00 am – 12:00 pm

**Newport**  
Monthly  
1st Thursday  
9:00 am – 12:00 pm

**Williston**  
Bi-weekly  
1st and 3rd Thursdays  
9:00 am – 12:00 pm

**Rutland**  
Monthly  
1st Tuesday  
1:00 pm – 4:00 pm

**Brattleboro**  
Monthly  
1st Thursday  
9:00 am – 12:00 pm

## Join ECO AmeriCorps

By Sonia Howlett, VT Agency of Agriculture, Food & Markets

Now a recent college grad who is interested in the environment? Interested in getting back into the workforce? People of all ages (above 18) and from all backgrounds are encouraged to consider ECO AmeriCorps as a pathway to an environmental career! Positions are open at a variety of state agencies and non-profits in Vermont.

ECO AmeriCorps members engage in a variety of topics that may include science communication, sustainable agriculture, climate resiliency and creating greater access to the natural world. ECO AmeriCorps members complete an 11-month term of service and member benefits include access to professional networks and training, a great community of fellow ECOs, an education award, health coverage and a living stipend. ECO gives participants the opportunity to explore areas of interest, build connections and gain confidence necessary to propel a career.

ECO AmeriCorps members typically follow three paths following their experience. Many are hired into full-time roles at the organization they served with or another organization doing related work. Others enter into a graduate or PhD program. Yet others opt to return for a second year of service.

Applications close soon. To learn more and apply, visit <https://dec.vermont.gov/administration-innovation/eco/prospective/positions>.

# Vermont Sustainable Jobs Fund Releases a Business Sense Training Series for Entrepreneurs and Small Business Owners

The Vermont Sustainable Jobs Fund (VSJF) released the first set of modules of its new Business Sense series, next level tools for entrepreneurs and small business owners. Business Sense is a no-fluff source of information that gets right to the heart of what small business owners need: essential tools and relevant resources to help their businesses grow. The Financial Literacy Series and the Business Operations Series are the first two modules of six planned modules to debut in 2023 to support Vermont's small business owners and entrepreneurs.

Written by VSJF's team of business coaches, the resource series shares their decades of experience in areas such as financials, operations, sales and marketing, human resources, leadership, and governance. Business Sense is designed to provide entrepreneurs and small business owners in various sectors with recommendations and practical advice to help their businesses not only survive but thrive.

VSJF provides tailored business management coaching, entrepreneurial support, and training to position Vermont-based entrepreneurs and small business owners in our designated market sectors – agriculture, forestry, waste management, renewable



**Vermont Sustainable Jobs Fund**

energy, and environmental technology – for growth and long-term success.

“Our business management coaching and Business Sense training series are designed to accelerate the growth of the enterprises we work with and expand the leadership capacity of the entrepreneurs who own and manage these businesses,” said VSJF Executive Director Ellen Kahler.

## Business Sense Resources:

Vist <https://www.vsjf.org/services/business-coaching/business-sense/> to access the new series modules and stay tuned in the coming weeks for the release of additional modules.

- Module 1: Financial Literacy – Just Released
  - 1.1 The Importance of Financial Statements
  - 1.2 The Importance of Cash Flow Statements
  - 1.3 The Purpose of Business Controls
  - 1.4 The Purpose of Internal Controls
  - 1.5 Functional Roles and Detail on Different Levels of Enterprise Accounting
- Module 2: Business Operations – Just Released
  - 2.1 Get it done. Systems and Operations
  - 2.2 KPIs and Metrics
  - 2.3 RASCI Chart – Who Does What?

## BUSINESS SENSE

Next Level Tools for Entrepreneurs & Small Business Owners



For more information go to  
<https://www.vsjf.org/services/business-coaching/business-sense/>  
 or call 802-828-1098.

- Module 3: Business Governance and Leadership – Coming Soon
- Module 4: Human Resources – Coming Soon
- Module 5: Marketing – Coming Soon
- Module 6: Sales – Coming Soon

The series was made possible in part by support from the Vermont Agency of Agriculture, Food and Markets, the Vermont Farm and Forest Viability Program (a program

of the Vermont Housing and Conservation Board), and the SBA Community Navigator Pilot Program, facilitating VSJF's ability to publish the resource as another way to help companies stay and grow in Vermont.





# Summer and Heat-related Illnesses

By Juana Lopez, VT Agency of Agriculture, Foods & Markets

As summer begins, people like to spend more time outside, enjoying the warmer weather, longer days, and sunshine. But as the temperatures outside keep rising, there are dangers to your body and health you should know. These risks can include heat-related illnesses. Individuals most at risk are those that mainly work outside, including but not limited to agricultural workers.

Heat-related illnesses are associated with high temperatures and humidity and the body's inability to withstand the heat load. There are different types of heat related illnesses that can be experienced, including heat stroke, heat exhaustion, rhabdomyolysis, heat syncope, heat cramps, and heat rash.

## Heat Stroke

According to the Centers for Disease Control and Prevention, heat stroke is the most serious heat-related illness. It occurs when the body can no longer control its temperature and the body temperature raises quickly. When heat strokes occur, in just a few minutes, the temperature of the body can rise, leading up to a permanent disability or death if emergency treatment is not given.

## Symptoms of heat stroke

- Confusion
- Loss of consciousness
- Hot, dry skin
- Constantly sweating
- Seizures
- Very high body temperature

If you see that you or someone you know is having similar symptoms, please do the following:

- Call 911 to get medical help
- Stay with the person until emergency medical services arrive
- Give cold water or ice bath
- Place cold wet clothes on skin

## Heat Exhaustion

Heat exhaustion is another condition to be weary of when working

outdoors. The heat-related illness occurs when the body has lost extreme amounts of water and salts, especially if one is sweating a lot.

## Symptoms of heat stroke

- Headache
- Nausea
- Dizziness
- Weakness
- Thirst
- Irritability

If you see that you or someone you know is having similar symptoms, please do the following:

- Take the person to an emergency room
- Call 911 if medical care is unavailable
- Remove from hot environment and give liquid to drink
- Stay with them until medics arrive

- Remove unnecessary clothing, like socks and shoes

It is important to remain proactive and precautionous during the summer in order to reduce the risk of a heat-related illnesses. In order to do this, farmers should take enough breaks out of the sun, wear long sleeve shirts and a hat to provide shade for your skin, and drink lots of water to stay hydrated. A healthy farmer deserves to operate in a healthy environment.

You can also contact Farm First for any questions, information, or assistance in creating a plan that fits your needs when addressing a heat-related illness or other concerns.

- Call (802)-318-5538. Farm First, a Vermont-

based program tries to tackle these issues by providing farm owners with confidential and personal services that best suits their needs including but not limited to financial or family concerns, illness, depression, alcoholism, etc. <https://www.farmfirst.org/>

For more information on the other types of heat-related illnesses, please visit:

- <https://www.cdc.gov/niosh/topics/heatstress/heatrelillness.html>
- <https://www.hopkinsmedicine.org/>
- <https://my.clevelandclinic.org/health/diseases/16425-heat-illness>





# Farm Connex at Center for an Agricultural Economy is Scaling Up to Serve Vermont Food and Farm Businesses

By Laura Hardie, Red Barn Writer

It's 4 p.m. on a Friday at the Farm Connex warehouse in Hardwick, Vermont. Two of their distribution vehicles are returning from delivering Vermont-made food products to stores and restaurants.

While out, they picked up freshly-made products directly from producers – everything from milk to craft sodas and salumi. At Farm Connex, the items will be unloaded, prepped, and reloaded for deliveries to stores the next day.

Farm Connex, the distribution arm of the Center for an Agricultural Economy's (CAE) Food Hub, delivers goods for Vermont producers whose operations are too small or rural to work with traditional distribution services.

"If you think about Butterworks Organic or Strafford Organic and the volume of value-added dairy they need to move off the farm - that is not a task they can easily do themselves without having their own trucking fleet and employees," Jon Ramsay, executive director of CAE, said. "Rather than replicating that at every farm, we can do that for many different farmers."

Yet, the space where an estimated 12 million dollars



Corey Hennessey, Farm Connex Manager

of food was moved from farm to shelf in 2022 is only 1,200 square feet. While one truck unloads products in the warehouse, the second is forced to wait in the parking lot because there's only one loading bay.

"It's like a Tetris game with pallets and boxes," Corey Hennessey, Farm Connex general manager, said. "We handle things multiple times because of space limitations, which fundamentally increases our costs."

Cramped in her makeshift office in the loft above the loading bay (which she shares with Dispatch and Logistics Coordinator Stella James and Ops Manager Don Maynard), Hennessey says the lack of space in this middle part of the supply chain is a bottleneck preventing Farm Connex from serving more farmers.

food businesses when it began to nearly 100 today. Farms like Sweet Rowen Farmstead in West Glover have seen exponential growth because of the partnership.

"Don was going to Sweet Rowen with a van to load up ten milk crates each week, and now we're picking up, on average, 250 to 300 a week," Ramsay said.

Sweet Rowen's story is one of many similar producer stories. In 2021, Farm Connex distributed products valued at 8 million dollars for producers. In 2022, that number rose over 50 percent to an expected 12 million dollars. In 2023, they expect to surpass that. Hennessey, an original

employee in the company, says demand for their services has exceeded their capacity for as long as she can remember.

With a growing waitlist built on their reputation for scaling Vermont farm businesses to the next level, CAE received a nearly \$250,000 grant in 2022 from the Working Lands Enterprise Initiative (WLEI) to scale their own business.

The grant will support building out infrastructure in a new warehouse, a new freight truck with one new trucking route with out-of-state delivery points, CDL driver training, and staff time for a general manager and dispatch and logistics coordinator.



From right to left, Jon Ramsay, Corey Hennessey, and Zach Hoppe of CAE Farm Connex



# Farm and Food Workers Relief Program

The U.S. Department of Agriculture's (USDA) Farm and Food Workers Relief Program (FFWR) provides a one-time \$600 payment for expenses incurred by frontline farmers and meatpacking workers due to the COVID-19 pandemic.

Frontline farm workers and meatpacking workers who incurred expenses preparing for, preventing exposure to, and responding to the COVID-19 pandemic can apply for a one-time \$600 relief payment through Pasa Sustainable Agriculture and other approved USDA partners.

## Locations

If you were a frontline farm worker or meatpacking worker who lived or worked in any of the following 14 states between January 27, 2020 until the end of the COVID-19 public health emergency is declared, you may be eligible to apply for a relief payment through Pasa Sustainable Agriculture:

- Connecticut
- Delaware
- District of Columbia
- Maine
- Maryland
- Massachusetts
- New Hampshire
- New Jersey
- New York
- Ohio
- Pennsylvania
- Rhode Island
- Vermont
- West Virginia

## There is no cost to apply.

- Relief payments will remain available until



**Pasa**  
SUSTAINABLE  
AGRICULTURE

funds are exhausted.

- Relief payments are not a loan and recipients will not be taxed.
- Immigration status is not one of the eligibility criteria.
- Applicant information is confidential. It will not be shared with the USDA nor any other state or federal agency.

## What frontline workers are eligible?

### Field workers

- Employees engaged in planting, tending, harvesting crops; post-harvest activities such as packing, grading, and sorting; and operating farm machinery on crop farms.

### Livestock workers

- Employees tending livestock, milking cows, or caring for poultry, including operating farm machinery on livestock or poultry operations.

### Meatpacking workers

- Employees engaged in livestock slaughter, meat or poultry processing, and packaging.



Apply at  
[farmworkers.com](https://farmworkers.com) or  
scan this QR code

You may also apply  
by phone at  
(833) 469-3397

## What is needed to apply?

1. Acceptable photo identification, such as:
  - State-issued driver's license or identification
  - Consular- or government-issued identification (foreign or domestic)

- H2A Visa or H2B Visa Employer-issued identification

2. Acceptable proof of employment, such as:

- W-2 tax form
- Pay stub
- Employment contract
- Letter from an employer
- H2A Visa or H2B Visa

## Contact Us For Support

### Phone (toll free):

Representatives are available to review eligibility requirements, answer your questions, and help process your application.

- (833) 469-3397
- Monday–Thursday: 9 am–8 pm ET
- Friday: 9 am–4 pm ET
- Sunday: 4–8 pm ET

### Email:

[support@pasafarming.org](mailto:support@pasafarming.org)

### Text program

Text "FFWR" to (833) 469-3397 for support.

## USDA Resources For Farmers, Ranchers and Businesses

- [usda.gov/topics/farming/grants-and-loans](https://usda.gov/topics/farming/grants-and-loans)
- [ams.usda.gov/services/local-regional/food-sector/grants](https://ams.usda.gov/services/local-regional/food-sector/grants)

## Financial resources

- [usda.gov/topics/organic/financial-resources-farmers-and-ranchers](https://usda.gov/topics/organic/financial-resources-farmers-and-ranchers)

## Disaster assistance

- [fsa.usda.gov/programs-and-services/disaster-assistance-program/index](https://fsa.usda.gov/programs-and-services/disaster-assistance-program/index)

# Programa De Alivio Económico Para Trabajadores Agrícolas Y De Alimentos

El programa de alivio para los trabajadores agrícolas y de alimentos del Departamento de Agricultura (USDA) provee un pago único de 600\$ por los gastos incurridos debido a la pandemia del COVID-19 para aquellos trabajadores que han estado en primera línea.

Los trabajadores agrícolas y empacadores de carne de primera línea, quienes incurrieron en gastos por prevenir

la exposición y enfrentar la pandemia del COVID-19, pueden aplicar a un único pago de alivio a través de Pasa Sustainable Agriculture y otros aliados aprobados por el USDA.

## Ubicaciones

Si fuiste un trabajador agrícola o empacador de carne de primera línea, que vivió o trabajó en cualquiera de los siguientes 14 estados, entre el 27 de Enero del

*continued on page 10*

Aplica en [farmworkers.com](https://farmworkers.com) o escanea el código QR:

También puedes aplicar vía telefónica llamando al (833) 469-3397



## VERMONT VEGETABLE AND BERRY NEWS



Compiled by Vern Grubinger,  
University of Vermont  
Extension  
802-257-7967 ext. 303, or  
[vernon.grubinger@uvm.edu](mailto:vernon.grubinger@uvm.edu)  
[www.vvbg.org](http://www.vvbg.org)

## Reports From The Field

(Westminster) Spring is going great so far, fieldwork is getting done on schedule. We have 10 acres of transplanted lettuce and kale growing well; beets and carrots are up, and the first asparagus is poking through. We're seeing

some of the best greenhouse germination in years—nearly 100 percent—of kale, lettuce, and cabbage. Our first sweet corn transplants are in the ground, and they'll be knee-high by the fourth of June, fingers crossed.

The first of our H-2A workers arrives momentarily, although local labor is practically nonexistent. If we don't see immigration reform soon, I don't see how we and other farmers who rely on H-2A labor can stay in business.

(Grand Isle) Blueberry bushes made it through the winter just great. A little rabbit damage on some of the bushes. Pruning is done.

(Grand Isle) It's nice to see the peas growing. Thanks to help from Ann Hazelrigg we have identified a new pest for us in the greenhouse cucumbers. We have sow

bugs and pill bugs eating the stalks of plants at the soil line. These are not insects but arthropods related to crayfish.

(Elmore) Plum trees and pear trees loaded with buds opening to flowers soon. Perennial vegetable beds sprouting up nicely with good crops of sorrel, rhubarb, horseradish and Jerusalem artichokes. Garlic beds looking good and currant bush cuttings propagated in March are growing new leaves in the high tunnel.

(Pownal) Blueberry Fields of Vermont. We have been working hard pruning blueberries and raspberries and fertilizing along with adding sulfur in the blueberries. The blueberry buds look great, and we can really see the growth after last year's heavy pruning. The raspberries are budding but do not appear in super

shape. A few days of very warm weather in the winter months, followed by freezing is something we have seen before, and it resulted in poor production in June.

(Huntington) I'm glad we got a lot of amendment-spreading and primary tillage done back in those glorious days of early April, as the last 10 days have seen less than ideal drying conditions, even on our well drained ground. I find it challenging to follow my spring tillage mantra of "Just get as much done as soon as the ground is fit" but we have to plant most of our crops on a pretty strict schedule dictated by greenhouse transplant seeding dates. That said, having ground bare for an extra week or two is far better than mudding plants into poorly prepared ground if an earlier window was missed.

(Westminster West) Still burning wood in the house gives you an idea of the current weather situation! Spring plant sales started very strong, but things have slowed due to cold and rain all week. We do a number of preorder truck load sales so that helps a lot when the weather doesn't cooperate. Field work besides garlic is nonexistent for now, although the garlic looks great! Thank goodness for tunnel work, tomatoes went in yesterday, cabbages and Napa are growing fast.

## UVM Extension Pollinator Support Program Updates

Upcoming pollinator workshops:

- Supporting pollinators, birds, and beneficial insects in a rotational sheep grazing and blueberry system, June 9,

*continued on page 12*

## Programa De Alivio Económico

*continued from page 9*

2020 y hasta que sea declarado el fin de la emergencia de Salud Pública por el COVID-19, pueden ser elegible para aplicar a un pago de alivio a través de Pasa Sustainable Agriculture:

- Connecticut
- Delaware
- District of Columbia
- Maine
- Maryland
- Massachusetts
- New Hampshire
- New Jersey
- New York
- Ohio
- Pennsylvania
- Rhode Island
- Vermont
- West Virginia

## No hay costo por aplicar

- Los pagos de alivio permanecerán disponibles hasta que los fondos sean agotados.
- Los pagos de alivio no son un préstamo y los destinatarios no pagarán impuestos por este beneficio.
- El estatus de inmigración no es un criterio de elegibilidad
- La información del aplicante es confidencial. Esta no será compartida con el USDA y cualquier otra agencia estatal o federal.

## ¿Cuáles trabajadores de primera línea son elegibles?

Trabajadores del Campo

- Empleados realizando labores de plantación, cuidado, cosecha de cultivos, actividades posteriores a la cosecha tales como:

empacado, inspección, evaluación, separación y operación de la maquinaria en las granjas de cultivo.

## Trabajadores Ganaderos

- Empleados que cuidan el ganado, vacas de ordeño, aves, incluyendo los que manejan la maquinaria en las granjas de ganadería o de aves de corral.

## Empacadores de Carne

- Empleados dedicados al sacrificio del ganado, el procesamiento y empaquetado de la carne de res y aves de corral.

## Qué se necesita para aplicar?

1. Identificación con fotos aceptables, tales como:
  - Licencia de conducir emitida por el estado.
  - Identificación consular o

del gobierno (Extranjero o doméstico)

- Visa H2A o H2B
- Identificación emitida por el empleador

## 2. Pruebas de empleo aceptables, tales como:

- Forma de impuesto W-2
- Colillas de Pago Contrato de empleo Carta del empleador Visa H2A o H2B

## Contáctanos para servicio técnico Teléfono (línea gratis)

- Los representantes están disponibles para revisar los requerimientos de elegibilidad, responder sus preguntas y ayudarlo durante el proceso de su aplicación.
- (833) 469-3397
- Lunes-Jueves: 9 am-8 pm
- Viernes: 9 am-4 pm
- Domingo: 4-8 pm

## Email

- [apoyo@pasafarming.org](mailto:apoyo@pasafarming.org)

## Ensayo de texto

- Envía el texto "FFWR" al (833) 469-3397 para recibir asistencia

## Recursos del usda para agricultores, ganaderos y negocios

Subsidios y préstamos

- [usda.gov/topics/farming/grants-and-loans](https://usda.gov/topics/farming/grants-and-loans)
- [ams.usda.gov/services/local-regional/food-sector/grants](https://ams.usda.gov/services/local-regional/food-sector/grants)

## Recursos financieros

- [usda.gov/topics/organic/financial-resources-farmers-and-ranchers](https://usda.gov/topics/organic/financial-resources-farmers-and-ranchers)

## Asistencias por desastres

- [fsa.usda.gov/programs-and-services/disaster-assistance-program/index](https://fsa.usda.gov/programs-and-services/disaster-assistance-program/index)



## CLASSIFIEDS

To place a classified ad in *Agriview* sign up to be a paid subscriber — visit our website: <https://agriculture.vermont.gov/administration/vaafm-news/agriview/advertising-agriview>

Email: [Ag.agriview@vermont.gov](mailto:Ag.agriview@vermont.gov), phone: 802-828-1619. Deadline for submissions is the 1st of each month for next month's issue. Example: January 1st deadline for February issue.

**Cattle**

Cow and calf pairs from closed Certified Organic herd. Mixed breeds, reasonable prices. 802-254-6982 (8)

Dexters for sale. 6 cows (open) 1 red, 2 dunn, 3 black, 3 steers. All dehorned. Animals are in great condition. Please contact: 802.356.5988 (Windsor County) (8)

Angus bull for sale, he is proven and 4 years old. Call for more info. (802)-558-8196 (8)

Jersey cows available:

closed herd in Highgate; Organic, grass-only, some A2A2, vaccinated, awaiting results of disease testing. 802-370-1051 (8)

Angus Bulls for sale good genetics and ready for service. Greensboro, VT (802) 533-9804 (9)

4 year old angus proven bull. Anyone who has interest can call me at 802-558-8196 (8)

**Employment**

Equipment Operator. Crop Production Assistant. CSA Coordinator & Wash Pack Manager. All positions with details at [root5farm.com](http://root5farm.com) (5)

**Equipment**

4.5 ton grain bin, 6.5 ton grain bin, (2) 8 ton grain bins priced to sell. 38 John Deere hay elevator. 16 ft New Holland hay elevator. 802-624-0143. (5)

Meyers Snow plow 8'6" wide \$800. 7-yard dump body on INK truck \$1500. 802-558-0166 (5)

Gehl 5640 skid steer-82 HP-2 speed. New tires, has steel tracks, 2,675 hours. \$19,995 (5)

Horsepower Delaval vacuum pump, good shape. 3 Pt: 7 ft back blade. 8 ton grain bins, 32 ft John Deere hay elevator, 16 ft new holland hay elevator. 802-893-4683, 802-624-0143 (7)

Micro Cheeseplant Equipment AlpineGlo Farm is looking to sell all cheese house contents as one package, this includes a 30 gallon pasteurizer. Real estate is not included in the sale. For a complete list of inventory and details please contact the farm directly. Located in Southern Vermont. Asking \$30,000 Contact Rachel Ware at [rachel@alpineglofarm.com](mailto:rachel@alpineglofarm.com) or (802) 463-2018 [www.alpineglofarm.com](http://www.alpineglofarm.com) (7)

60-gallon Upright Milkplan Bulk Tank \$3700 Semen Tank \$300 Pick Up Only, Killington VT Call 802-490-5712 (7)

Two tecumsac gasoline power tapers for tapping sugarbush. \$75 each or both for \$125. Both start and run great. Tap up to 150 taps on one tank gas. 802-291-4525. Call or text. Royalton. (8)

1 8ft snow blower \$2300. 1 5ft international snow blower \$1300. 802-624-0143 (9)

New Holland Baler with kicker, good shape. 315 New Holland baler, good baler. 1



24ft hay elevator. Priced to sell. 802-624-0143 or 802-895-4683 (9)

Kuhn disc mower for 3 point hitch. 5 foot cut with 4 discs. Excellent condition. \$1500. 802-291-4525. (9)

Gehl - 3935 -\$9500.00, Gehl - 3410 -\$7000.00, Kuhn/knight 3170 mixer- \$19,000.00 Call - 802-537-2435 or 802-345-5543 (9)

Kuhn GMD400 Disc Mower, Kuhn tedder, Darf 5 wheel rake on rubber, JD 24T baler (would like to sell together). Also JD 2040 tractor with loader (40 hp; 2wd), NH 329 manure spreader. Springfield. 802 886-1473 (9)

1 Bunker Silo Defacer (fits on skid steers) \$1250.00, 400 amp transfer switch for generator \$400 or BO, Electric pipe threader \$300, CONTACT INFO: Robert Manning 802-233-9173 (9)

Beautifully restored doctor's buggy and Irish Brougham coach. Call 802-451-6813 for photos & details. (9)

2012 Kuhn 3130 trailer type reel mixer wagon. Digistar scale, floatation tire, very good condition, always under cover - \$19,500. [upweyfarm@gmail.com](mailto:upweyfarm@gmail.com) 802-457-1639 (9)

at 1-802-744-2444 or Shaye at 1-802-744-6553 or cell phone 1-802-274-4939. (9)

**Equine**

Trailer – 2 horse thoroughbred size, dressing room, ramp and tag along. 802-345-8026 (6)

6 stable available, indoor arena. Outdoor paddocks, do all work yourself and all feed. Slight fee for water & lights. 802-345-8026 (6)

**General**

Beautifully restored doctor's buggy and Irish Brougham coach. Call 802-451-6813 for photos & details. (8)

24x36 Pole Barn, built by John Morgan, metal roof, hemlock siding, 6 sliding doors, 1000 bale hay storage. Must be moved this summer. Barn is currently in West Windsor, VT. Best offer. Photos not allowed in Agriview, but available by request. 802 484-5827

**Hay, Feed & Forage**

Certified Organic wrapped round bales for sale. approx 50% dry matter. Have forage sample results for 3rd cut, \$45.00/ 50.00 per bale depending on which hay is taken. Call or text 1-802-210-5279 (5)

4x5 round bales. Early 1st cut. 802-265-4566 (6)

4x4 Wrapped Round Bales, 1st cut 2022 for sale. \$45/bale 4x4 Dry Round Bales, \$50/bale 4x4 Wrapped Round Bales, 1st cut 2021 \$40/bale Pick up at the farm. 1710

**For Agricultural Events and Resources Visit:**

- The VT Agency of Agriculture Events Calendar: <https://agriculture.vermont.gov/calendar>
- UVM Extension Events Calendars: [https://www.uvm.edu/extension/extension\\_event\\_calendars](https://www.uvm.edu/extension/extension_event_calendars)
- Vermont Farm to Plate Events Calendar: <https://www.vtfarmtoplate.com/events>
- Northeast Organic Farming Association of Vermont Events Calendar: <http://nofavt.org/events>
- DigIn Vermont Events Calendar: <https://www.diginvt.com/events/>
- Agricultural Water Quality Regulations: <http://agriculture.vermont.gov/water-quality/regulations>
- Agency of Ag's Tile Drain Report now available here: <http://agriculture.vermont.gov/tile-drainage>
- VAAFM annual report available here: [http://agriculture.vermont.gov/about\\_us/budgets\\_reports](http://agriculture.vermont.gov/about_us/budgets_reports)
- Farm First: Confidential help with personal or work-related issues. More info call: 1-877-493-6216 any-time day or night, or visit: [www.farmfirst.org](http://www.farmfirst.org)
- Vermont AgrAbility: Free service promoting success in agriculture for people with disabilities and their families. More info call 1-800-639-1522, email: [info@vcil.org](mailto:info@vcil.org) or visit: [www.vcil.org](http://www.vcil.org).

For more agricultural events visit our Funding Opportunities & Resources for Businesses webpage at: [http://agriculture.vermont.gov/producer\\_partner\\_resources/funding\\_opportunities](http://agriculture.vermont.gov/producer_partner_resources/funding_opportunities)

continued on page 12



Wild Apple Road, South Pomfret, 05067. Call Tom at 802-457-5834 (6)

Good Quality First cut netted large dry round bales, \$50 Excellent Quality First cut 9x200 ft Ag Bags of 2021 haylage early cut. Delivery available, David Leblanc, 802-988-2959 or 802-274-2832 (6)

Organic round bales for sale. Well wrapped, tedded, June cut, 2022. Never wet; sweet smell. I load, you haul. \$35 at the farm. Easy access for trailer or truck. Thistle Hill Farm. N. Pomfret, VT info@ThistleHillFarm.com. (7)

Certified organic wrapped round bales for sale. All hay is tedded and feeds out like it's dry. 4.5' by 4' bales. Early and late 1st cut @ \$45/ bale. 2nd and 3rd cut @ \$55/bale. N. Danville 802-748-8461. (8)

Small square first cut bales. \$4.00 a bale. Call 802-767-4247 (9)

Wheat and oat rotocut straw from western Canada, quality feeding. Large bales 3X4X8 or 3X4X7. Stored inside. From 175USD/ton, transport

available (not included). We are located 30 minutes away from Swanton VT in Canada (Saint-Jean-sur-Richelieu). Call or text us 514-588-3829 for more info. (9)

Feed: organic haylage, 3rd cut - \$60/ton, 2nd cut - \$60/ton, 1st cut - \$45/ton. Call - 802-537-2435 or 802-345-5543 (9)

#### FRANKLIN COUNTY

Good quality hay 1c & 2c from western US & Canada. Alfalfa orchard and orchard sweet grass. 18 to 20% plus protein. Large bales and organic by trailer loads. Large or small square bales of straw whole or processed at farm we load or direct delivery by trailer load. 802-849-6266 or 802-373-5217 (12)

#### RUTLAND COUNTY

Small square bales. First cut. 210 available at \$5 each. 802-773-8716 (6)

#### WASHINGTON COUNTY

Small square bales - 1st cut \$6.00 or less for quantity. 802-793-3511 (4)

Small square bales - 1st and 2nd cut; excellent quality. \$5.00/ bale at the Paquet Farm, Barre 802-476-5082 (8)

#### Sheep & Goats

Now taking orders for our 2023 registered Alpine kids. Lazy Lady Farm, with 35 years of breeding experience will have doe and buck kids, from 30 does, available starting in March. We have a 2800# herd average with DHIA testing. We are CAE, CL and Johnes free with annual testing. Please visit our website: [www.lazyladyfarm.com](http://www.lazyladyfarm.com). for farm info and our sales list. 802-595-4473 [laini@lazyladyfarm.com](mailto:laini@lazyladyfarm.com) (6)

Ice House Farm dairy goat kids available. Disease free herd. Saanen & Alpine lines averaging over 4,000 pounds of milk per season. Call 802-247-1443 (8)

Alpine kids \$200. CAE/CL/ Johnes negative. ADGA top genetics. <http://www.sagefarmgoatdairy.com> Katie 802-461-9025 [kpindell@gmail.com](mailto:kpindell@gmail.com) (8)

#### Wanted

A 1941 farm license plate with the prefix AGR. Also need a 1944 farm plate. Terry at 802-885-5405 (6)

Hay elevator in good working condition with motor 24' is perfect. Please email with pic and info. You can call me Israel at 802-563-6061 Appreciated!! Email is [Israel1@gmail.com](mailto:Israel1@gmail.com) (7)

Maltese pup or young dog 802-885-6450 (8)

Help Wanted year round on our organic livestock (Angus beef, pork, lamb) farm in N. Danville, Vt. Part time position consists of morning chores (7:30 am-10:30am) Monday thru Friday and every other weekend. Full time position possible for someone willing to do chores and who has experience with outdoor work (fencing, haying, logging) as well. We also would allow someone to use the farm to produce for themselves and market through our on farm store (chicken, eggs, produce, etc). Pay depends on experience with entry level at \$15/hr.

We would assist someone from out of town in finding rental housing. Email Vince Foy at [badgerbrookmeats@gmail.com](mailto:badgerbrookmeats@gmail.com) or call 802-748-8461. (8)

Fahr KH40 hay tedder for parts. Contact Dan, Hinesburg VT 802-482-2047 (9)

Caretaker for beautiful "hobby" farm in the Upper Valley of Vermont, Woodstock area. On site detached housing provided. Part or full time duties. Perfect for retired person or couple. Basic horse experience preferred but not necessary. References required, Make inquiries by email: [morganmiltimore@gmail.com](mailto:morganmiltimore@gmail.com) or call 802-436-1111. (9)

#### For Sale

**Entire Micro Dairy and Cheese House For Sale**  
AlpineGlo Farm has been successfully making farmstead goat cheeses since 2016 in the Windham County area,

and is looking to pass on the business locally as sales outlets and a strong customer base are in place. This is an opportunity to step right into a functioning business. Inventory includes a herd of 13 ADGA Alpine Dairy Goats (10 currently due to kid in April), all milk parlor contents, and all cheese house contents including 30 gallon pasteurizer. Real estate is not included, this is to be set up on your property. For full details and inventory please contact the farm directly. Located in Southern Vermont(Westminster).

Contact Rachel Ware at [rachel@alpineglofarm.com](mailto:rachel@alpineglofarm.com) or (802) 463-2018. PLEASE, serious inquiries only. (8)

419 acre organic Farm - 2 - robotic milkers, 3 - bunker silos 275/100 freestall , 4 bedroom farm house Call - 802-537-2435 802-345-5543 (9)



#### For Immediate Release

The Vermont Agency of Agriculture, Food and Markets have received an application for a Milk Handlers license from the following entity: Vermont Farm and Cheese Collaborative, of Lebanon, New Hampshire to process, package, buy/sell, and transport cheese within the State of Vermont. If anyone has germane information as to why or why not this company should or should not be licensed those comments are to be sent too:

The Vermont Agency of Agriculture Food and Markets  
Dairy Section Office  
116 State Street, Montpelier, VT 05620-2901

All written comments must be received by July 15, 2023.

At that time the Agency will make a determination as to whether a hearing will be held. If we determine that a hearing is necessary and you wish to attend please write to the above address attention Dairy Section.

#### Vegetable & Berry News

*continued from page 10*

10am-noon, Owl's Head Blueberry Farm, Richmond

- Supporting pollinators, birds, and beneficial insects on a diverse livestock farm and rotational grazing system, July 19, 10am-noon, Rebop Farm, Brattleboro

To register or to request a disability-related accommodation to participate in this program, contact Kelsie Meehan at 802-656-4829 or [kelsie.meehan@uvm.edu](mailto:kelsie.meehan@uvm.edu) at least three weeks before the event so we may assist you.

Contact Kelsie with program questions or for additional information.



# NASDA Foundation Selected by USDA to Establish the Northeast Regional Food Business Center

The National Association of State Departments of Agriculture Foundation celebrates being selected by the U.S. Department of Agriculture to establish the USDA Northeast Regional Food Business Center. The food business center will help farmers, ranchers and other food businesses access new markets and navigate federal, state, and local resources, thereby closing the gaps to success. The Northeast Regional Food Business Center will work specifically in 11 states: Connecticut, Delaware, Maine, Maryland, Massachusetts, New Hampshire, New Jersey, New York, Pennsylvania, Rhode Island and Vermont.

NASDA Foundation Senior Director Chris Jones shared the organization's excitement and gratitude for the new Regional Food Business Center partnership with USDA.

"The NASDA Foundation is thrilled to bring together state departments of agriculture in the Northeast and public-private partners Buffalo Go Green and



Cornell University's Center for Regional Economic Advancement to build the USDA Northeast Regional Food Business Center. Collaborative partnerships and aligned efforts will enable a more resilient food system and focused support for local communities in the Northeast.

NASDA Foundation thanks the USDA, Under Secretary Moffitt and Secretary Vilsack for the opportunity to facilitate this cooperative agreement and we look forward to serving the region and communities in numerous ways to uplift small and mid-sized food and farm businesses. Together we can and will do remarkable things."

The NASDA Foundation enhances American food and agricultural communities through education, outreach, and research. Creating more resilient, diverse and competitive food systems amplifies this mission and is a central tenet of the USDA



Regional Food Business Center program.

Through the Regional Food Business Center program, USDA will establish a total of 12

Regional Food Business Centers that will serve all areas of the country with a focus towards historically underinvested communities and will

provide coordination, technical assistance and capacity building for farmers, ranchers, and other food businesses.

## Upcoming Grant Opportunities

The Agency of Agriculture, Food & Markets is pleased to be able to help you more easily identify upcoming grant opportunities. Please go to <https://agriculture.vermont.gov/grants/calendar> for more information.

### Programs Open Year-Round

#### Farmstead Best Management Practices (BMP) Program

Technical and financial assistance for engineered conservation practices on Vermont farms.

Jenn LaValley  
[Jenn.LaValley@vermont.gov](mailto:Jenn.LaValley@vermont.gov)  
802-828-2431

#### Pasture And Surface Water Fencing (PSWF) Program

Technical and financial assistance for pasture management and livestock exclusion from surface water on Vermont farms.

Mary Montour  
[Mary.Montour@vermont.gov](mailto:Mary.Montour@vermont.gov)  
802-461-6087

#### Grassed Waterway and Filter Strip (GWFS) Program

Technical and financial assistance for implementing buffers and seeding down critical areas on VT farms.

Sonia Howlett  
[Sonia.Howlett@vermont.gov](mailto:Sonia.Howlett@vermont.gov)  
802-522-4655

#### Conservation Reserve Enhancement Program (CREP)

Implementation costs of vegetated buffers and rental payments for maintained buffers on Vermont agricultural land.

Ben Gabos  
[Ben.Gabos@Vermont.gov](mailto:Ben.Gabos@Vermont.gov)  
802-461-3814

Phil Wilson

[Phillip.Wilson@vermont.gov](mailto:Phillip.Wilson@vermont.gov)  
802-505-5378

### Early Summer 2023

#### Dairy Packaging Innovation Grant

Grants to support modernized packaging initiatives that prioritize sustainability, scalability, and marketability

Kathryn Donovan  
[Kathryn.Donovan@vermont.gov](mailto:Kathryn.Donovan@vermont.gov)  
802-585-4571

### August

#### Working Lands Enterprise Fund Service Provider Grants & Contracts

Grants and contracts for service providers that support agriculture and forestry businesses

Clare Salerno  
[Working.Lands@vermont.gov](mailto:Working.Lands@vermont.gov)  
802-917-2637

### Fall 2023

#### On-Farm Milk Storage & Handling Grant

Grants to provide dairy farmers with funds that support the purchase and supplies to improve milk storage, handling and energy efficiencies

Ben Eldredge  
[Ben.Eldredge@vermont.gov](mailto:Ben.Eldredge@vermont.gov)  
802-522-9478



**TAX PLANNING & PREPARATION**

**\*\* Call today for a 2021 Tax Consultation \*\***

**KEVIN CHANNELL**

**802-249-7384**

Kevin@FarmAndForestServices.com

www.FarmAndForestServices.com





**VERMONT LICENSED REALTOR**

**\*\* Call today for Farm and Real Estate Services \*\***

# Growing Herbs for Tea

By Andrea Knepper,  
UVM Extension

**H**erbs are attractive in the garden, easy to grow and a pleasure to use. Many common herbs can also be brewed into delicious herbal teas.

Chamomile is one of the most popular herbal teas and is easy to grow in the garden. Choose German chamomile (*Matricaria chamomilla*), which is less bitter than its relative, Roman chamomile (*Chamaemelum nobile*).



*German Chamomile*

Sow seeds, pressing gently into the surface, about four weeks before the last frost. Chamomile reseeds readily, so you can expect your patch to return every year. Harvest the flowers when they are nearly in full bloom.

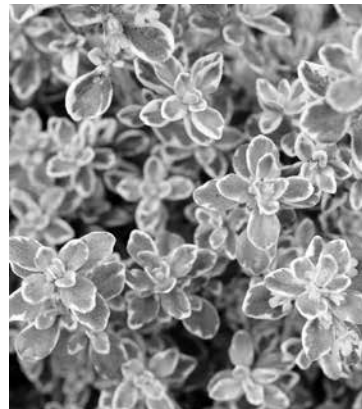
Dry the flowers by spreading them on a tray or in a dehydrator. Then steep one to two teaspoons in hot water for a soothing herbal tea.

An herb you may already have in your garden that makes a lovely tea is lemon thyme (*Thymus citriodorus*). It is a perennial in many Vermont locations as it is



hardy in U.S. Department of Agriculture Plant Hardiness Zones 5-9. Look for plants at your local garden center as this herb can be difficult to start from seed.

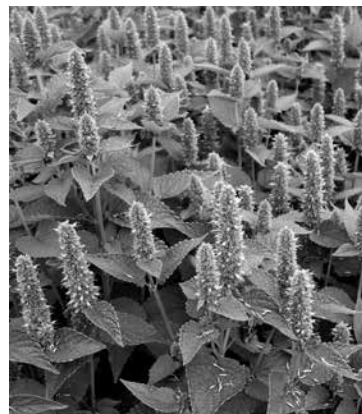
Harvest five- to six-inch long stems, tie them together and hang them to dry. When



*Lemon Thyme*

ready to consume, steep one or two stems in hot water. This herb is very flavorful, so experiment to find your preferred strength.

Anise hyssop (*Agastache foeniculum*) is a short-lived



*Anise Hyssop*

perennial that is loved by pollinators, especially bees, butterflies and hummingbirds. The seeds need cold stratification and light to germinate.

Sow the seeds about four weeks before the last frost, lightly pressing them into the soil.

Harvest the licorice-scented leaves after the flowers have bloomed and then dry in a dehydrator. Or cut stems, secure them in a bundle and hang them upside down to dry. Brew tea by steeping two to three teaspoons of dried leaves in hot water.

If you prefer your tea with an added sweetener, try growing stevia (*Stevia rebaudiana*). Stevia can be difficult to start from seed, so check with your local garden center for a plant. Both fresh and dried stevia leaves can be enjoyed in your teas.

Harvest leaves when the plant reaches about eight inches tall and before it blooms. Stems can be trimmed, secured together, and hung to dry. Stevia leaves are significantly sweeter than granulated sugar, so experiment with the quantity to find your desired sweetness.

Perhaps the most versatile herb you can grow for herbal teas is tulsi, sometimes known as holy basil. Tulsi (*Ocimum tenuiflorum*) is an herb native to India that is well known for its delicious flavor and adaptogenic properties. Adaptogens are plants that promote overall wellbeing by helping your body respond to tiredness, stress and anxiety.



*Holy Basil*

Tulsi is easy to start from seed. Seeds can be started indoors about four weeks before the last frost and transplanted or direct seeded in the garden after all danger of frost has passed.

Begin harvesting tulsi when the plant starts to develop flowers. Trim stems above a growth node, bundle

them together and hang them to dry. Tulsi tea is delicious when brewed on its own or blended with other herbs to suit your taste.

View additional resources on growing and using herbs at [www.uvm.edu/extension/mastergardener/gardening-resources](http://www.uvm.edu/extension/mastergardener/gardening-resources).

## Agency Contact Numbers

To help you find the right number for your question, please consult the list below. You are always welcome to call our main line 802-828-2430. We will do our best to route you to person most able to answer your question quickly and accurately.

### Program Phone Numbers

Act 250	802-461-6798
Animal Health	802-828-2421
Business Development	802-828-1619
Dairy	802-828-2433
Enforcement: Water Quality or Pesticide	802-828-2431
Feed, Seed, Fertilizer & Lime	802-828-5050
Licensing & Registration	802-828-2436
Meat Inspection	802-828-2426
Produce Program	802-522-7811
VT Agriculture & Environmental Lab	802-585-6073
Water Quality BMP	802-828-3474
Water Quality Grants	802-622-4098
Water Quality Reports	802-272-0323
Weights & Measures	802-828-2433
Working Lands	802-917-2637



# Seeking the 2023 Fantastic Farmer!

*\$5K Award Recognizes our States Hard-Working Farmers*

By Scott Waterman, VT  
Agency of Agriculture, Food & Markets

The 2023 Fantastic Farmer application period is open! The Agency and the A. Pizzagalli Family Farm Fund want to

ensure we are recognizing our farmers and farming communities while telling the positive stories that highlight Vermont's agriculture community. We hope you will send us your name or pass on the word about this award to someone

deserving in our small state. Apply yourself or nominate someone you know for a chance at being selected and win \$5K from the A.

Pizzagalli Family Farm Fund! Deadline to submit is June 15. Pictured is the 2022 winner, Jenna Baird with partner Jacob Powsner at Baird Farm

Maple Syrup. For more information visit: <https://agriculture.vermont.gov/administration/fantastic-farmer-award> #VT



**Do you own land in agricultural production that is not very productive and...**

- Want to receive payments for some of this land?
- And/or need help paying for and installing necessary grazing infrastructure?

If so, consider enrolling in the Conservation Reserve Enhancement Program (CREP)! CREP takes agricultural land that is located along waterways and is currently in perennial or annual crops out of production to plant riparian forest buffers. Landowners receive an up-front incentive payment as well as annual rental payments for the 15-year duration of the contract, and the costs of the project are nearly always covered at 100% by the FSA, Partners for Fish & Wildlife, and CREP.

For more information and to find out if you qualify, please contact Ben Gabos (802-461-3814 or [ben.gabos@vermont.gov](mailto:ben.gabos@vermont.gov)) or Phillip Wilson (802-505-5378 or [phillip.wilson@vermont.gov](mailto:phillip.wilson@vermont.gov))

## For Immediate Release

The Vermont Agency of Agriculture, Food and Markets have received an application for a Milk Handlers license from the following entity: Agri-Mark, Inc/Winooski Cold Storage, of Waitsfield, Vermont to transport cheese within the State of Vermont. If anyone has germane information as to why or why not this company should or should not be licensed those comments are to be sent to:

The Vermont Agency of Agriculture Food and Markets  
Dairy Section Office  
116 State Street, Montpelier, VT 05620-2901

All written comments must be received by July 15, 2023.

At that time the Agency will make a determination as to whether a hearing will be held. If we determine that a hearing is necessary and you wish to attend please write to the above address attention Dairy Section.

## Vermont Fairs and Field Days 2023

Vermont Fairs will continue to follow state and federal COVID-19 guidelines. Please know that the situations are still changing frequently so we suggest you visit the individual Fair's web site for the most current information.

- Vermont Dairy Festival . . . . . June 1 - 4
- The Bradford Fair . . . . . July 14-16, 2023
- Lamoille County Field Days . . . . . July 21-23, 2023
- Franklin County Field Days . . . . . August 3-6, 2023
- Addison County Fair & Field Day . . . . . August 8-12, 2023
- Deerfield Valley Farmers Day . . . . . August 10-13, 2023
- Vermont State Fair . . . . . August 15-19, 2023
- Caledonia County Fair . . . . . August 23-27, 2023
- Bondville Fair . . . . . August 25-27, 2023
- Champlain Valley Exposition . . . . . August 25 - September 3, 2023
- Guilford Fair . . . . . September 3-4, 2023
- Orleans County Fair . . . . . September 6-10, 2023
- The Tunbridge World's Fair . . . . . September 14-17, 2023





## Celebrating Investments in Vermont's Agricultural Water Quality

By Alli Lews, Vermont Agricultural Water Quality Partnership

As warmer spring weather brings fullness to Vermont's waters, the Vermont Agricultural Water Quality Partnership (VAWQP) nods to the investments of farmers to help ensure those waters stay clear. The VAWQP released its 2022 Annual Report highlighting the impacts of state and federal investments toward protecting and improving water quality. The VAWQP report shares conservation practice implementation data which indicates a high level of commitment from Vermont farmers in land stewardship.

The VAWQP reports that in 2022, \$25.9 million was invested by state and federal entities throughout Vermont to implement agricultural

water quality projects. This assistance helped farmers install conservation practices such as crop rotation, manure injection, reduced tillage and cover crops, and riparian forested and grass buffers. In addition, 9.3 miles of permanent 50-foot riparian buffers were installed and protected through easements on private lands. Buffers improve water quality by filtering sediments and nutrients, protecting streambanks, shading waters and providing important habitat that support biological diversity; and providing opportunities for educational, scientific and recreational activities.

These figures highlight that farmers are accelerating their adoption of conservation practices that benefit water quality and soil health. Water quality initiatives across all sectors have already achieved 19% of

the phosphorous reduction requirements in the Lake Champlain TMDL, and 13% in the Lake Memphremagog TMDL. This has reduced an estimated 41.8 metric tons of phosphorus from entering Vermont's water bodies.

"These important management practices are a sure sign that many farmers are embracing their role in the stewardship of our water resources. Their investments are paying dividends in our work to provide clean water and communities in which all residents can thrive," said Dr. Eric Howe, Director of the Lake Champlain Basin Program. These meaningful gains in water quality improvement on farms were reflected in the recent Clean Water Initiative 2022 Performance report, published annually by the Vermont Department of Environmental Conservation.

Thanks to the effort and engagement of Vermont farmers, we have been able to document continual reductions in the amount of phosphorus going into our waters year after year. We are pleased to support practices that are beneficial to both our environment and the stewards of our agricultural lands.

There is no easy fix to "clean up" our lakes and rivers from historical phosphorus loading and it will take time to see the results of water quality efforts; encouragingly in recent years, significant progress has been made in improving and protecting water quality across the state. "The challenges facing Lake Champlain can't be overcome by one individual or organization alone; that's the value of partnerships. We have to come together in partnership and

collaboration to protect this invaluable resource for current and future generations." said Vermont USDA Natural Resources Conservation Service (NRCS) State Conservationist Travis Thomason.



### Heart & Soil Paper Fiber

Provides abundant organic matter, naturally improving soil fertility and water retention capabilities. Cost-effective, locally sourced lime product. Mixes with any nitrogen source.

RMI partners with farms throughout Vermont to **BUILD HEALTHY SOILS**

For more information please contact us at: 603-536-8900 or RMI@RMIREcycles.com

**RMI**  
BUILDING HEALTHY SOILS