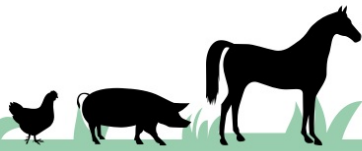


# Required Agricultural Practices (RAPs) HIGHLIGHTED REGULATIONS DRAFT-SHEET

Sections §5.7, §6.0, and §5.4 in RAPs



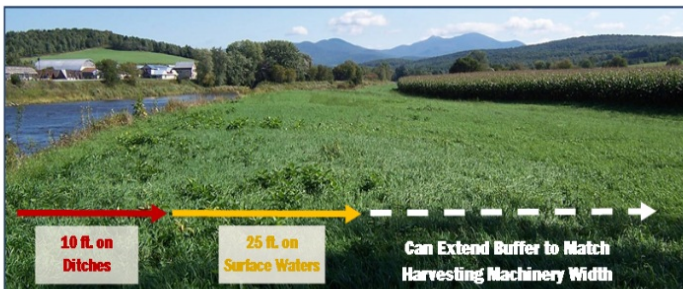
Updated October 30, 2015

## BUFFER WIDTHS

Section §5.7

## LIVESTOCK EXCLUSION

Section §6.0



- **Intermittent waters, ditches, diversions, swales and conveyances shall be buffered 10 feet**
- **Surface waters shall be buffered 25 feet**
  - Harvesting of vegetated buffers are allowed
  - No spreading manure or wastes in the vegetated buffers
  - Fertilizer may be used per Nutrient Management Plan recommendations to establish or maintain buffer
  - Site specific variances are possible as approved by Secretary.



### **In Production Areas - Livestock will have no access to surface water except:**

- At defined crossings or watering areas
- Where prescribed rotational grazing plan exists (minimum of 3" of vegetative growth will need to exist in pasture)
- In areas approved by the Secretary

### **Outside of Production Areas - Livestock will have no access to surface water when:**

- Erosion of unstable surface water banks is present
- The Secretary designates areas of actual or potential threat

## SOIL HEALTH MANAGEMENT AND COVER CROPPING

Section §5.4



Annual croplands subject to flooding from adjacent surface waters are required to have cover crops planted (Broadcast by Sept. 15th; Drilled by October 1st)



Field borne gully erosion shall be managed using appropriate management strategies such as the establishment of grassed waterways, filter strips or other methods.

To learn more about the DRAFT agricultural water quality regulations (RAPs), visit:  
[www.Agriculture.Vermont.gov/water-quality/regulations/rap](http://www.Agriculture.Vermont.gov/water-quality/regulations/rap)





# Required Agricultural Practices (RAPs) HIGHLIGHTED REGULATIONS DRAFT-SHEET

Sections §5.3, §5.2 (e) and §5.5 (b,c,e,f) in RAPs

Updated October 30, 2015

## NUTRIENT MANAGEMENT PLANNING =

Section §5.3



**Soil Tests**



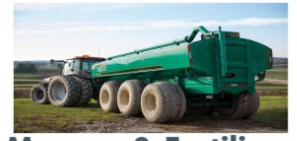
**Manure Analysis**



**Crop Rotations  
and Yields**

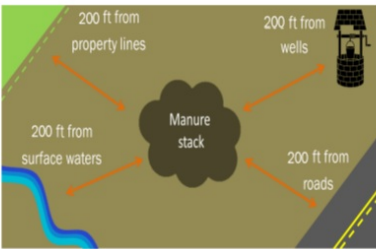


**Environmental  
Factors and  
Erosion Potential**



**Manure & Fertilizer  
Application Rates  
and Records**

All Large, Medium, and Certified Small Farm Operations shall develop and implement a Nutrient Management Plan (NMP) that meets USDA NRCS Practice Code Standard (590). Uncertified Small Farms are required to have soil tests, manure analysis, nutrient application rates & manure spreading records.



### MANURE STACKING

Section §5.2 (e)



### MANURE APPLICATION STANDARDS

Sections §5.5 (e,f), §5.7 (b)



### WINTER SPREADING BANS

Sections §5.5 (b,c)

Manure is prohibited to be stacked in a floodway or in an area subject to flooding.

#### Manure stacking must meet the following setbacks:

- 200' from property lines or domiciles
- 200' from surface waters
- 200' from private water supplies
- 100' from intermittent waterways, ditches, swales, diversions or other conveyances

#### Manure shall not be applied to fields that:

- Exceed soil test phosphorus of 20 ppm
- Exceed 10% slope WITHOUT having a 100' vegetated buffer around surface waters
- Are saturated with water
- Are frozen and/or snow covered

#### No Application of Manure within:

- 10' of an intermittent waterway
- 25' of a surface water
- 100' of a private well
- 200' of a public water supply

#### No manure or waste application between December 15th & April 1st.

Depending on winter weather conditions, the Secretary may prohibit application of manure to land between:

- December 1st and 15th
- April 1st and 30th

After October 15th to April 15th, manure may NOT be spread within 100' of top of bank of adjacent surface waters.

To learn more about the DRAFT agricultural water quality regulations (RAPs), visit: [www.Agriculture.Vermont.gov/water-quality/regulations/rap](http://www.Agriculture.Vermont.gov/water-quality/regulations/rap)

